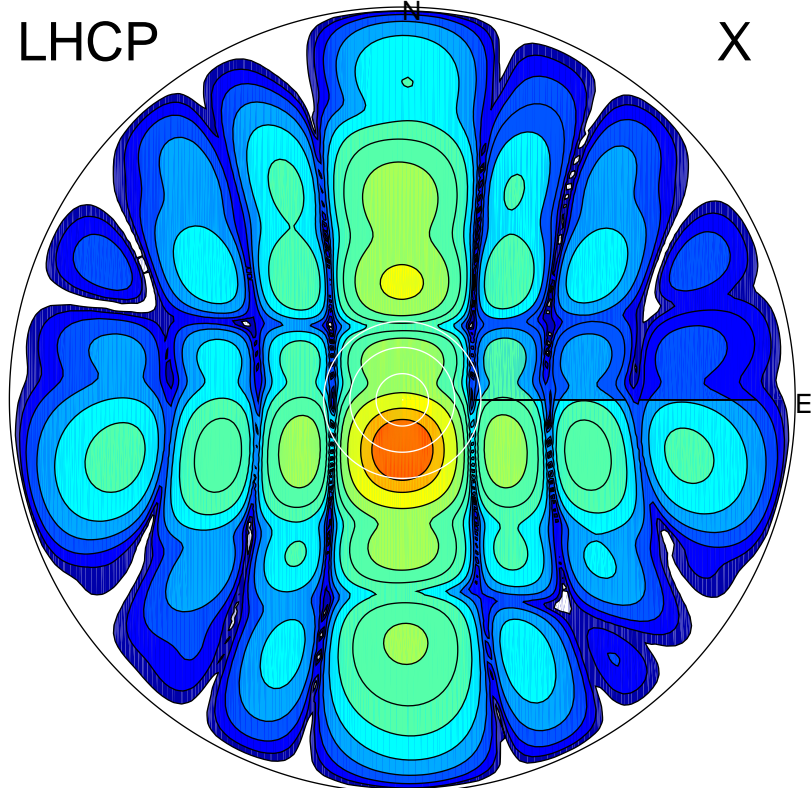


2017-03-03 17:58:32 A2 4.04000000 MHz 711.0 kW

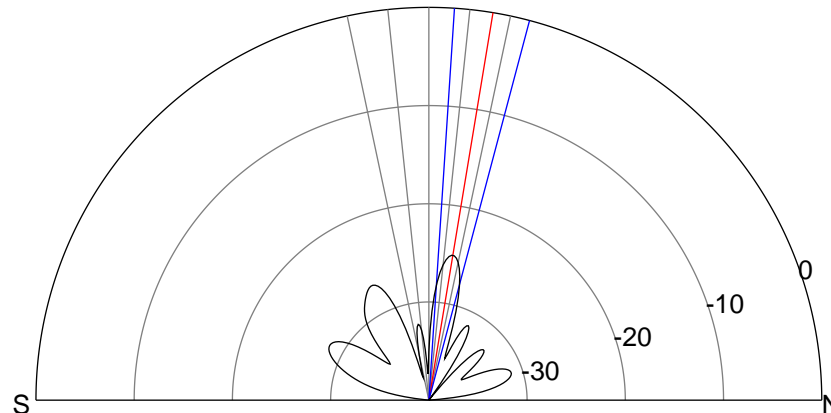
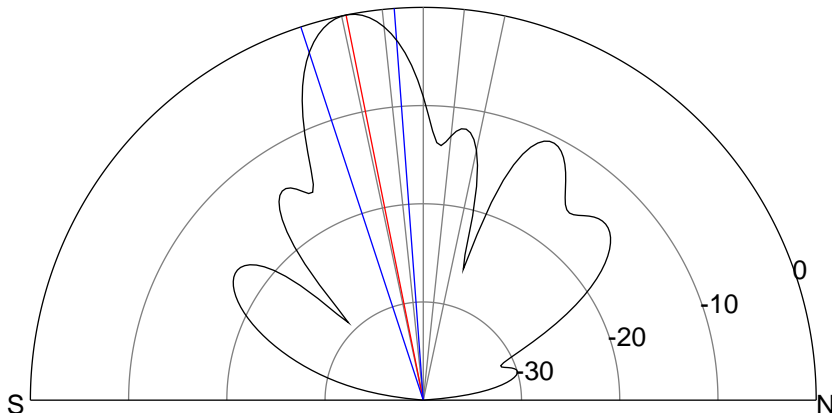
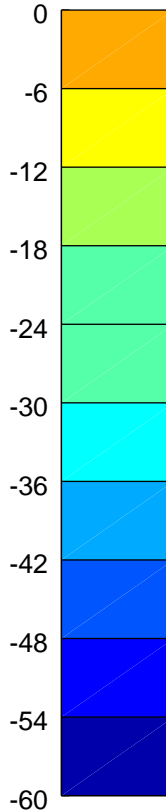
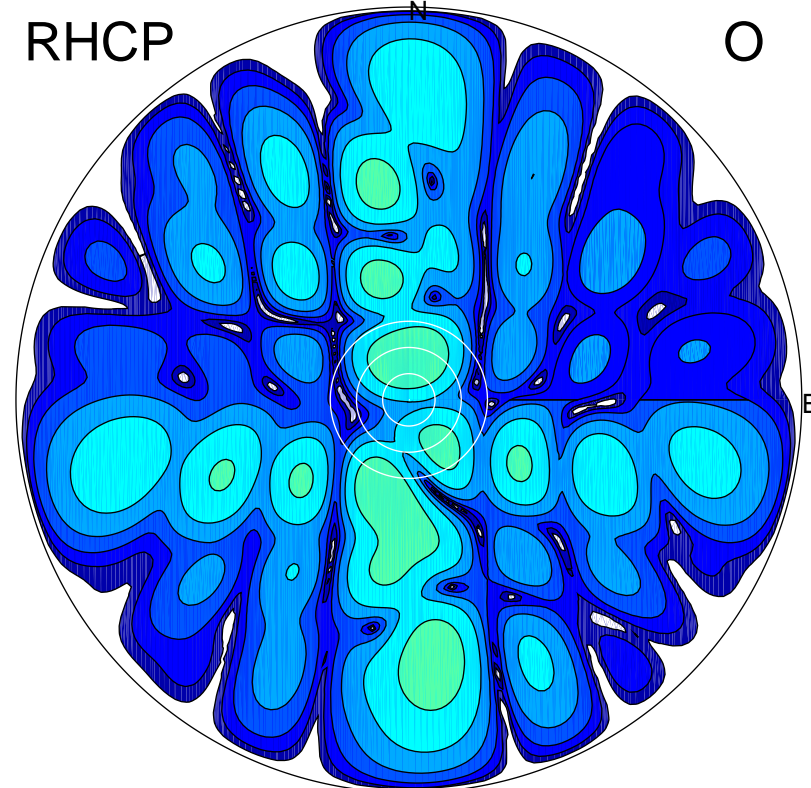
LHCP

X



RHCP

O



### ERP 109.3 MW

Peak gain 21.9 dBi at Az 181 Zen 11  
RHCP gain -12.4 dBi  
N-S peak 21.9 dBi at Zen -11.3  
N-S -3 dB beamwidth 13.9 deg.

### ERP 0.3 MW

Peak gain -3.2 dBi at Az 359 Zen 9  
LHCP gain 9.8 dBi  
N-S peak -3.2 dBi at Zen 9.4  
N-S -3 dB beamwidth 11.1 deg.