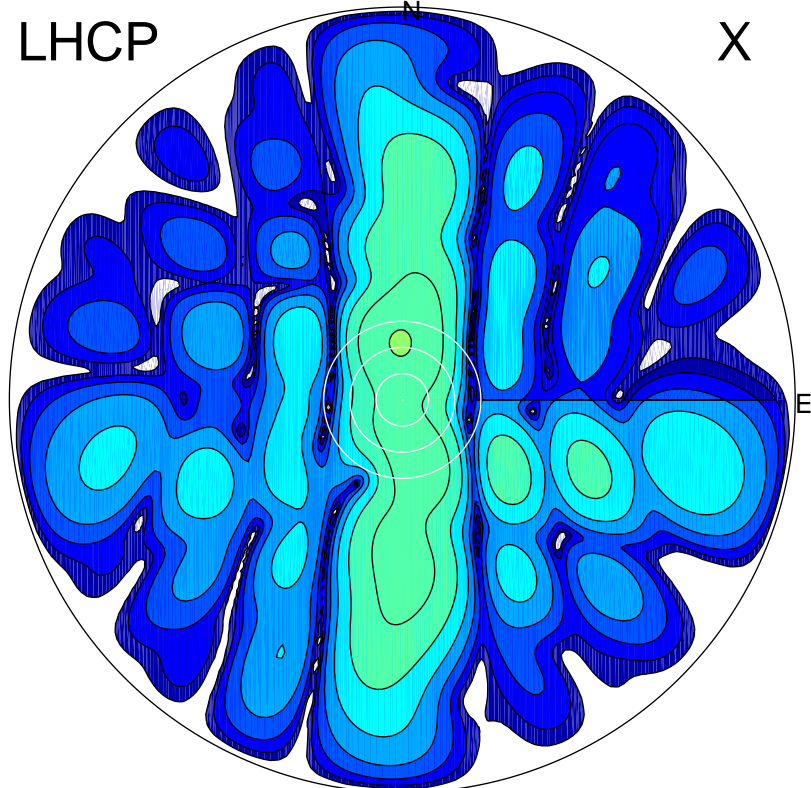


2017-03-03 17:42:32 A2 4.04000000 MHz 796.0 kW

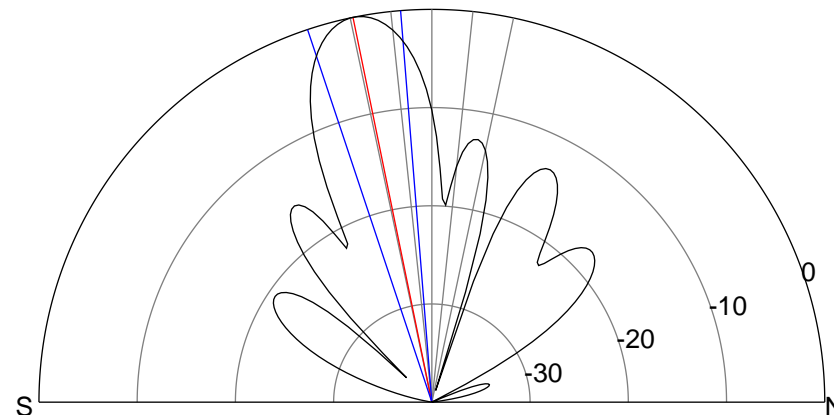
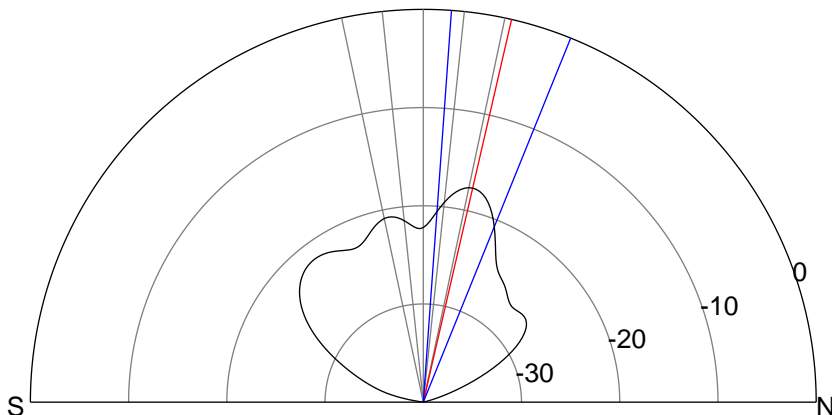
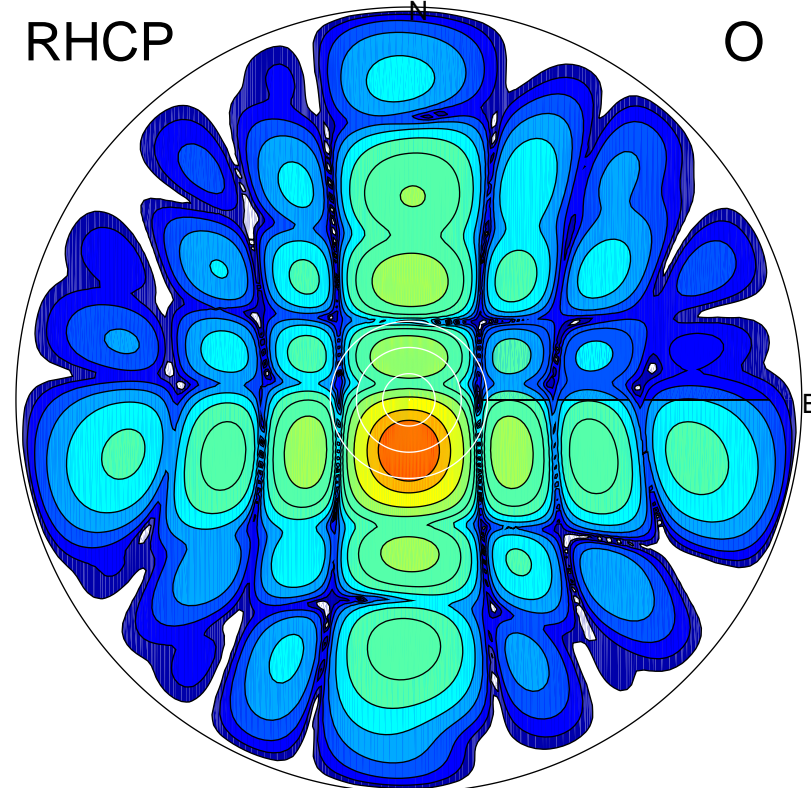
LHCP

X



RHCP

O



ERP 2.2 MW

Peak gain 4.5 dBi at Az 359 Zen 13
RHCP gain 7.3 dBi
N-S peak 4.5 dBi at Zen 13.0
N-S -3 dB beamwidth 17.9 deg.

ERP 129.8 MW

Peak gain 22.1 dBi at Az 180 Zen 12
LHCP gain 1.2 dBi
N-S peak 22.1 dBi at Zen -11.6
N-S -3 dB beamwidth 13.9 deg.