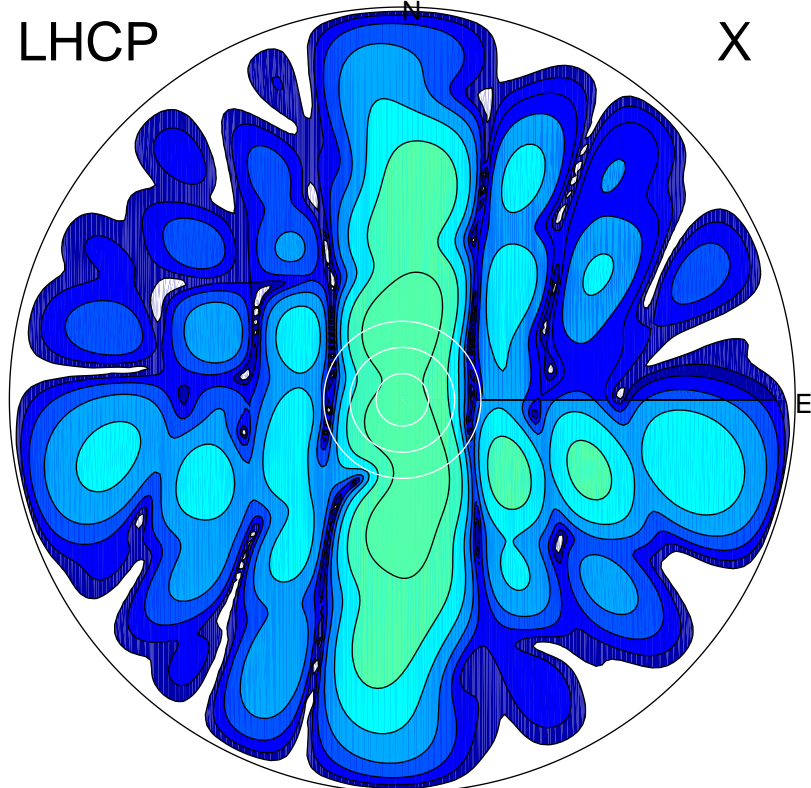


2017-03-03 14:31:57 A2 4.04000000 MHz 515.0 kW

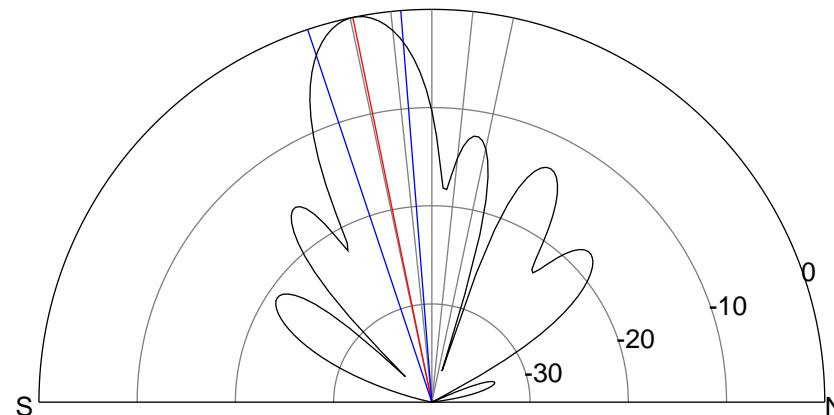
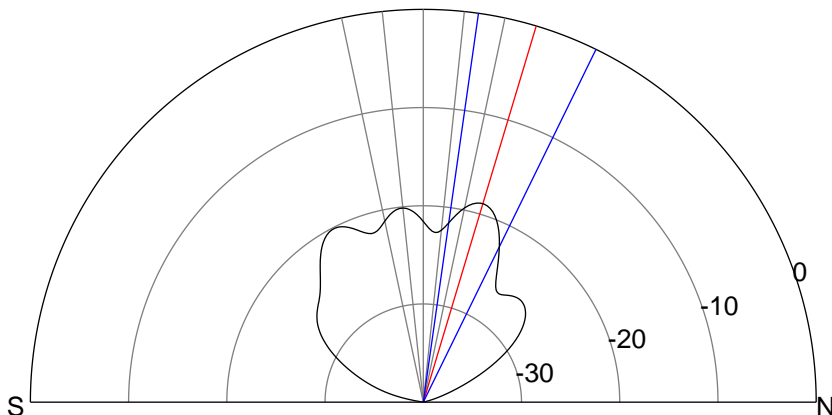
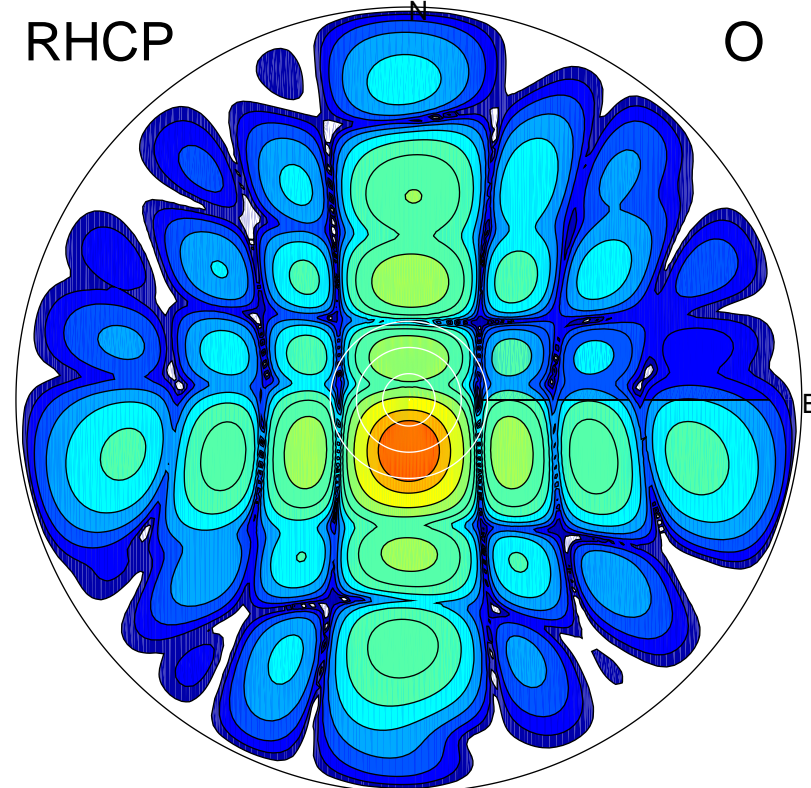
LHCP

X



RHCP

O



ERP 1.1 MW

Peak gain 3.2 dBi at Az 359 Zen 17
RHCP gain -6.4 dBi
N-S peak 3.2 dBi at Zen 16.7
N-S -3 dB beamwidth 18.0 deg.

ERP 84.0 MW

Peak gain 22.1 dBi at Az 181 Zen 12
LHCP gain 0.9 dBi
N-S peak 22.1 dBi at Zen -11.6
N-S -3 dB beamwidth 13.9 deg.