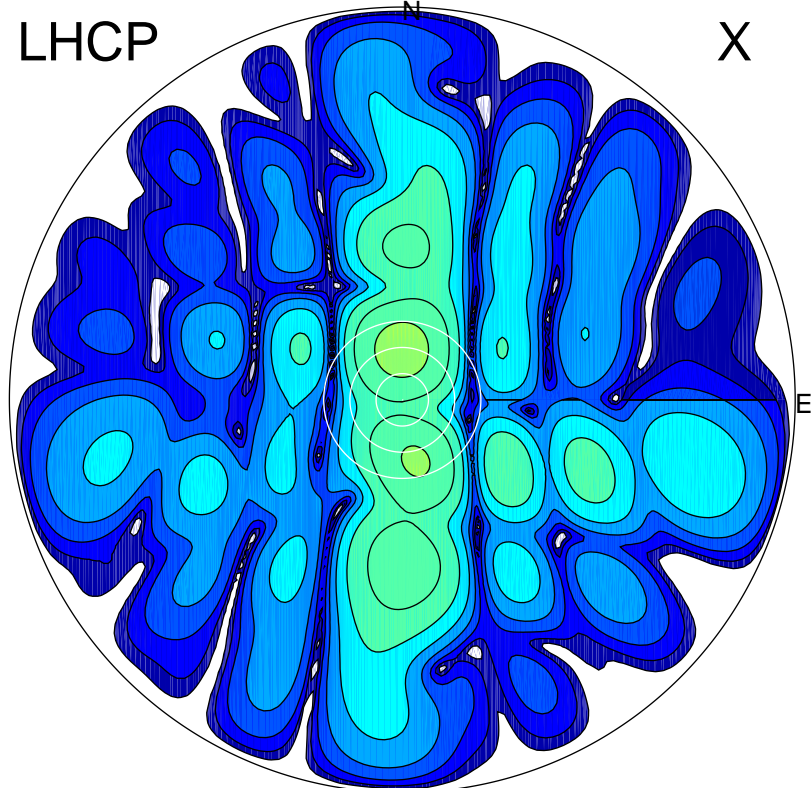


2017-03-02 18:58:32 A2 4.04000000 MHz 760.0 kW

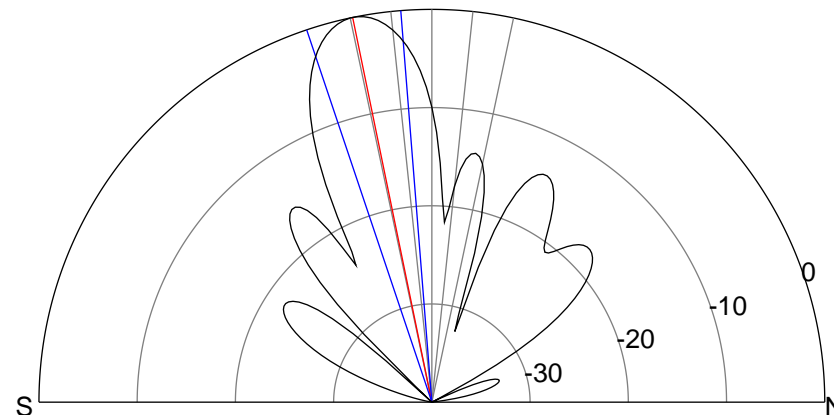
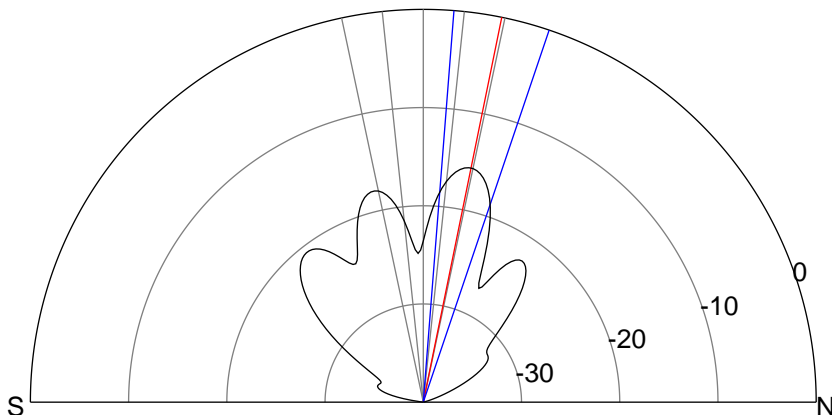
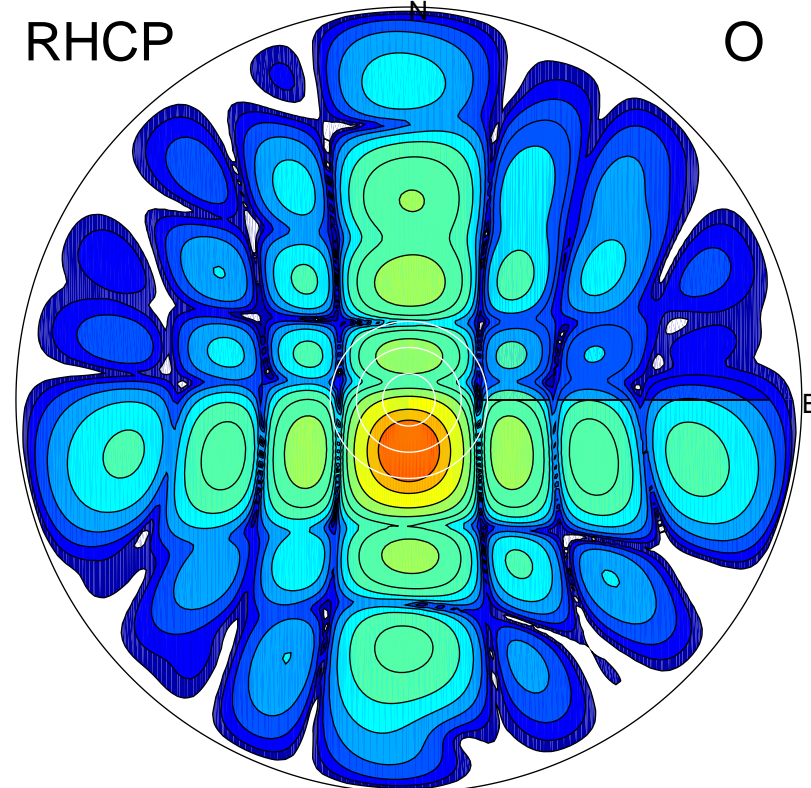
LHCP

X



RHCP

O



ERP 3.3 MW

Peak gain 6.4 dBi at Az 358 Zen 11
RHCP gain 7.6 dBi
N-S peak 6.4 dBi at Zen 11.5
N-S -3 dB beamwidth 14.2 deg.

ERP 123.3 MW

Peak gain 22.1 dBi at Az 180 Zen 12
LHCP gain 4.1 dBi
N-S peak 22.1 dBi at Zen -11.6
N-S -3 dB beamwidth 14.0 deg.