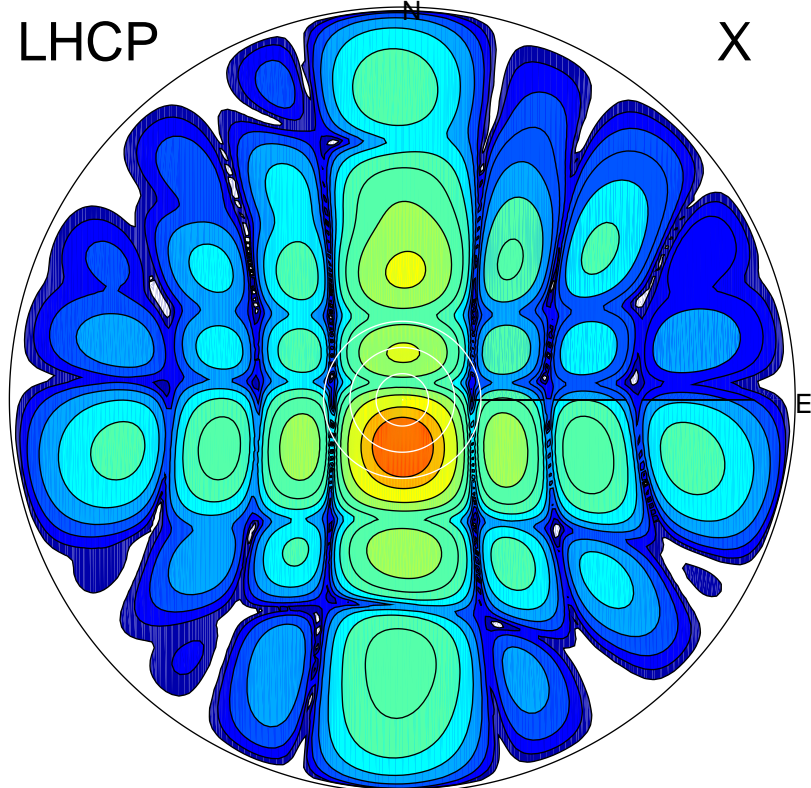


2017-03-02 17:22:32 A2 4.04000000 MHz 713.0 kW

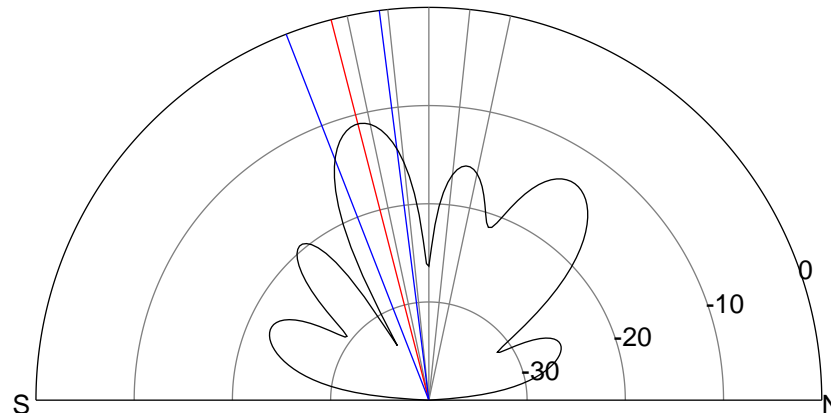
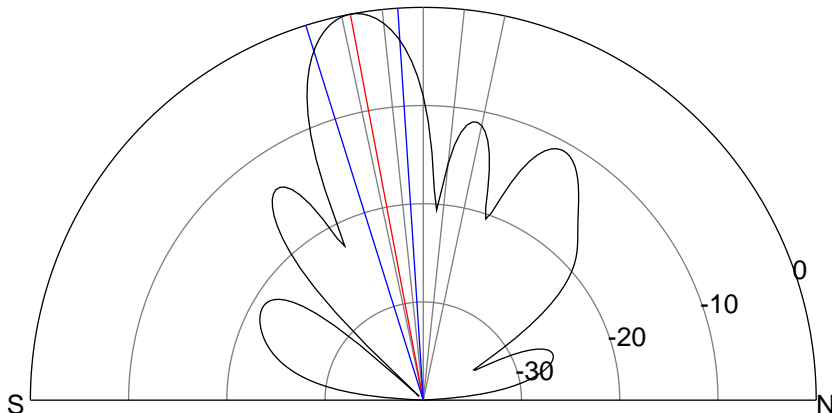
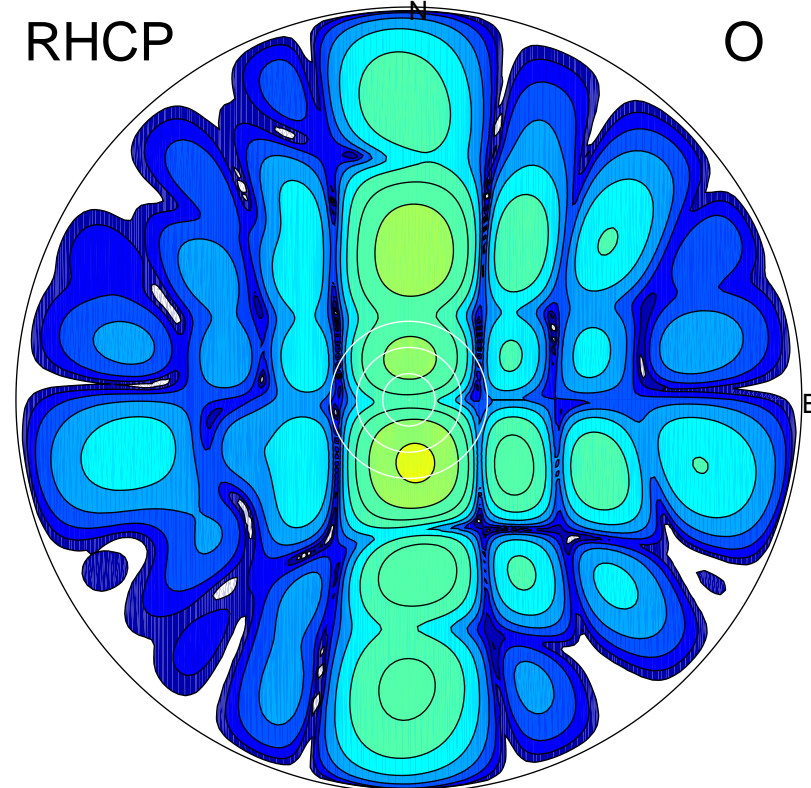
LHCP

X



RHCP

O



ERP 100.5 MW

Peak gain 21.5 dBi at Az 180 Zen 11
RHCP gain 9.9 dBi
N-S peak 21.5 dBi at Zen -10.7
N-S -3 dB beamwidth 13.7 deg.

ERP 8.3 MW

Peak gain 10.7 dBi at Az 174 Zen 15
LHCP gain 20.3 dBi
N-S peak 10.5 dBi at Zen -14.4
N-S -3 dB beamwidth 14.0 deg.