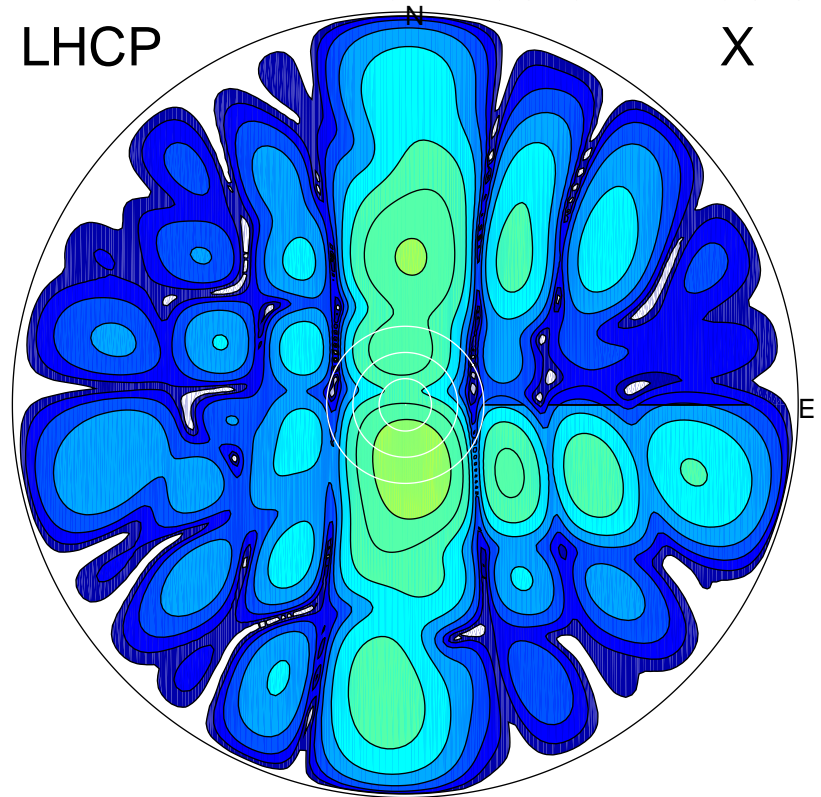


2017-03-02 17:06:32 A2 4.04000000 MHz 710.0 kW

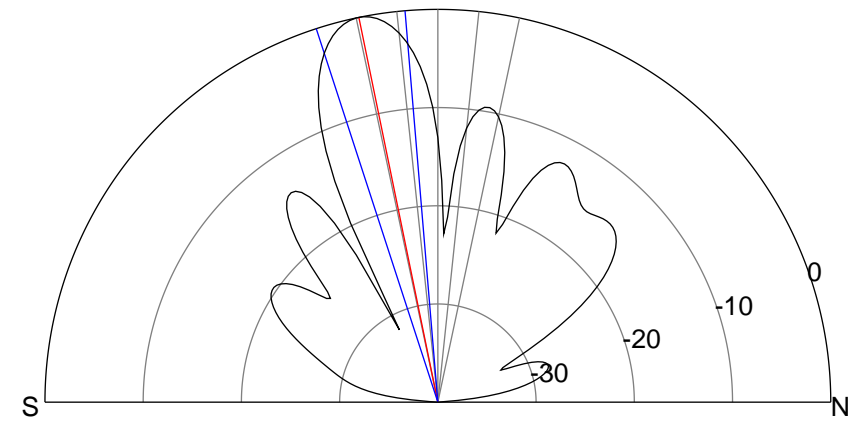
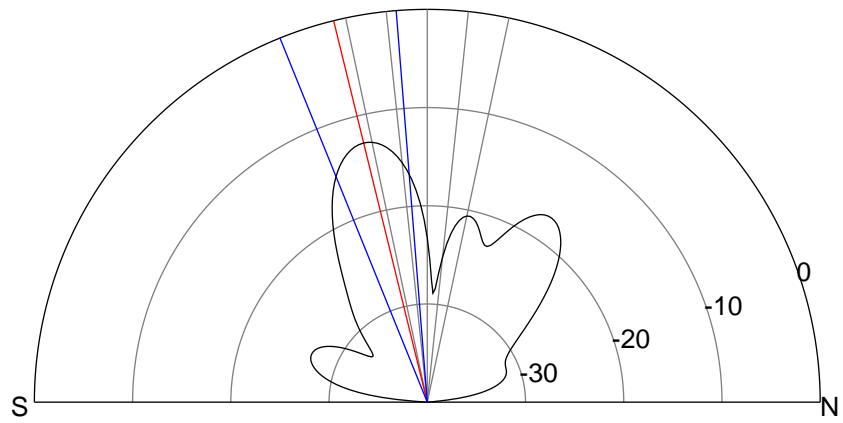
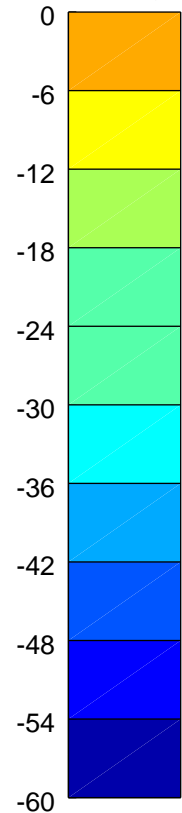
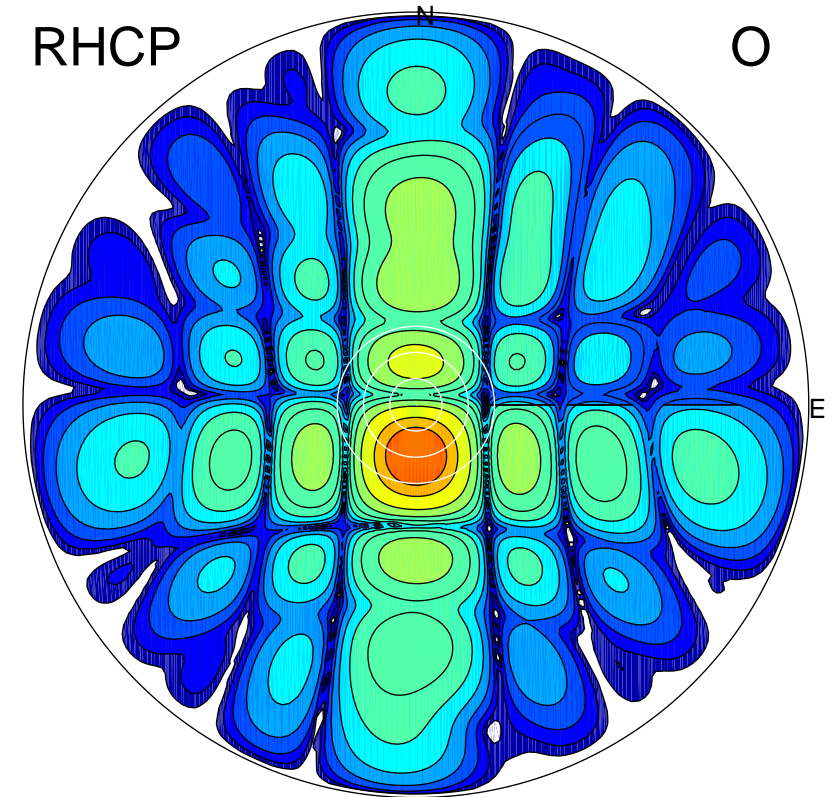
LHCP

X



RHCP

O



ERP 5.9 MW

Peak gain 9.2 dBi at Az 173 Zen 14
RHCP gain 21.4 dBi
N-S peak 9.0 dBi at Zen -13.8
N-S -3 dB beamwidth 17.5 deg.

ERP 107.8 MW

Peak gain 21.8 dBi at Az 181 Zen 12
LHCP gain 8.8 dBi
N-S peak 21.8 dBi at Zen -11.6
N-S -3 dB beamwidth 13.2 deg.