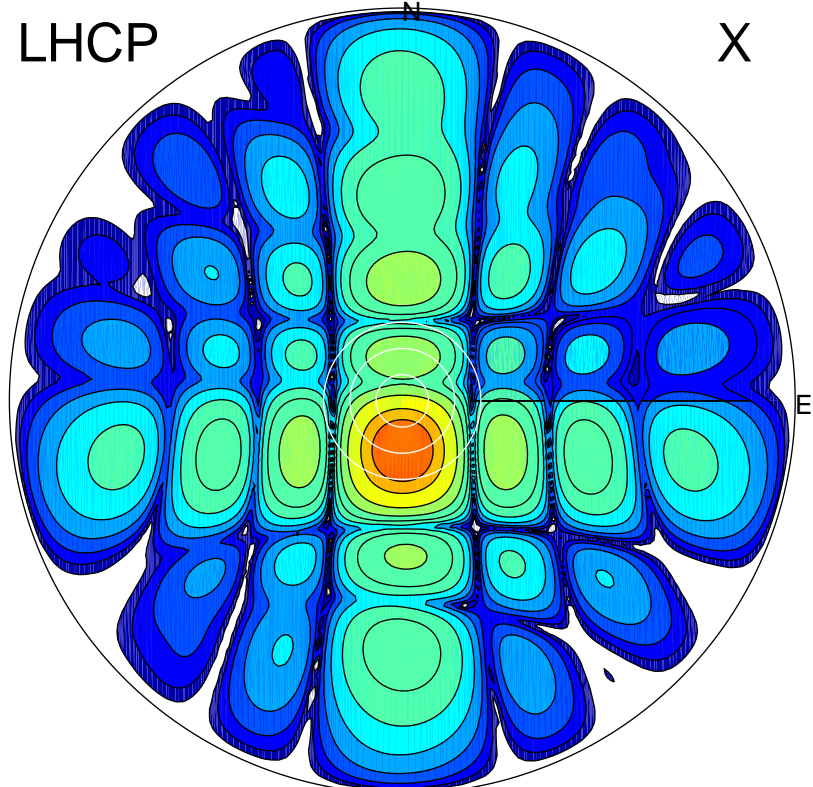


2017-03-01 19:40:32 A2 4.04000000 MHz 767.0 kW

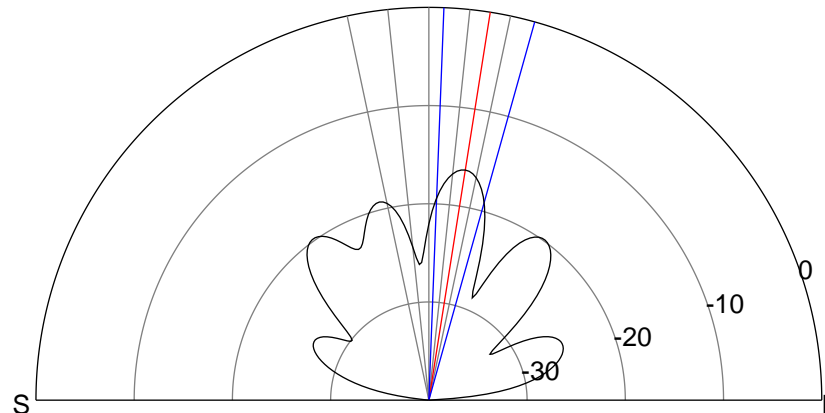
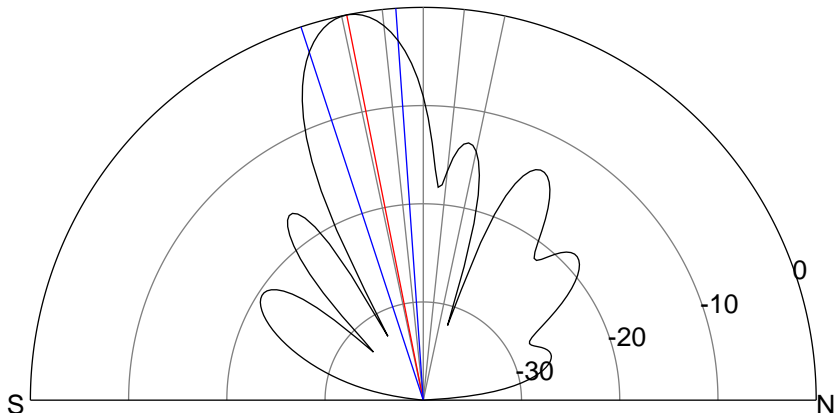
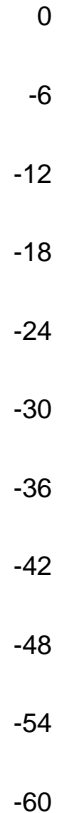
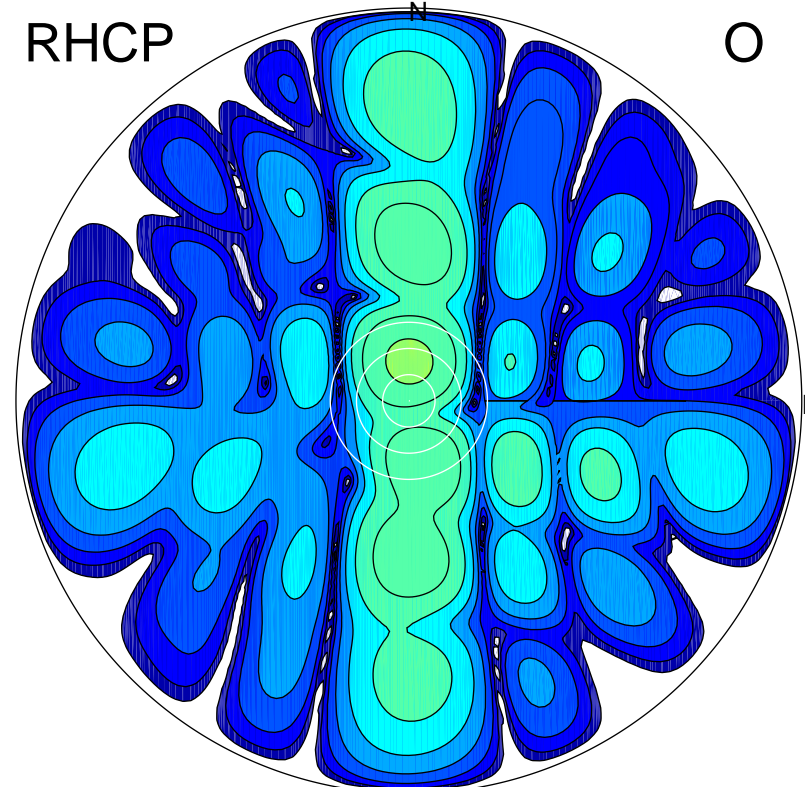
LHCP

X



RHCP

O



ERP 122.8 MW

Peak gain 22.0 dBi at Az 180 Zen 11

RHCP gain 2.2 dBi

N-S peak 22.0 dBi at Zen -11.2

N-S -3 dB beamwidth 14.1 deg.

ERP 2.9 MW

Peak gain 5.8 dBi at Az 1 Zen 9

LHCP gain 8.5 dBi

N-S peak 5.8 dBi at Zen 9.0

N-S -3 dB beamwidth 13.4 deg.