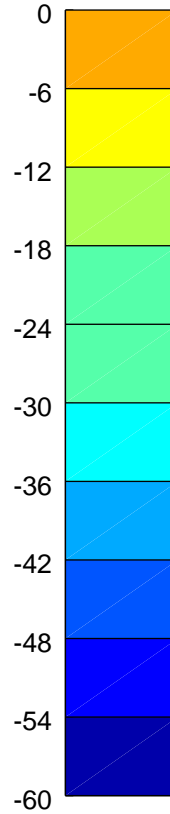
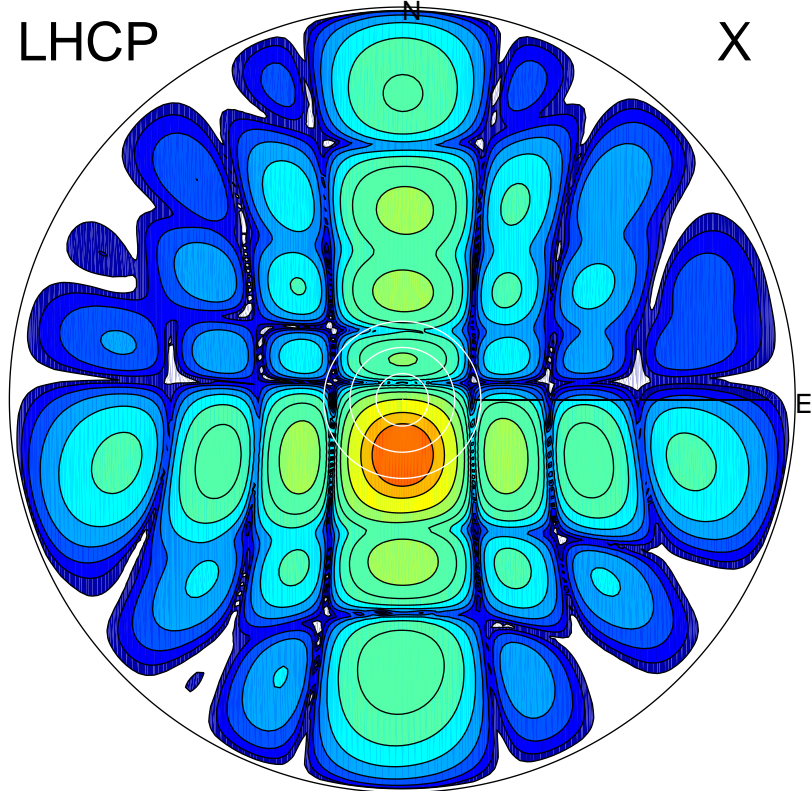


2017-03-01 19:00:32 A2 4.04000000 MHz 774.0 kW

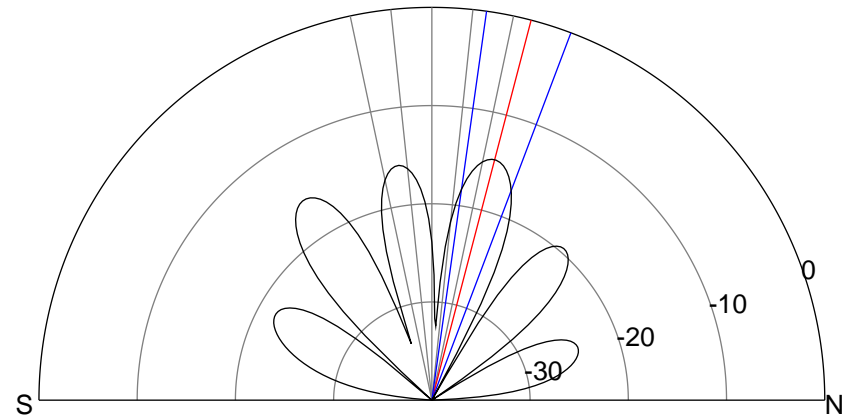
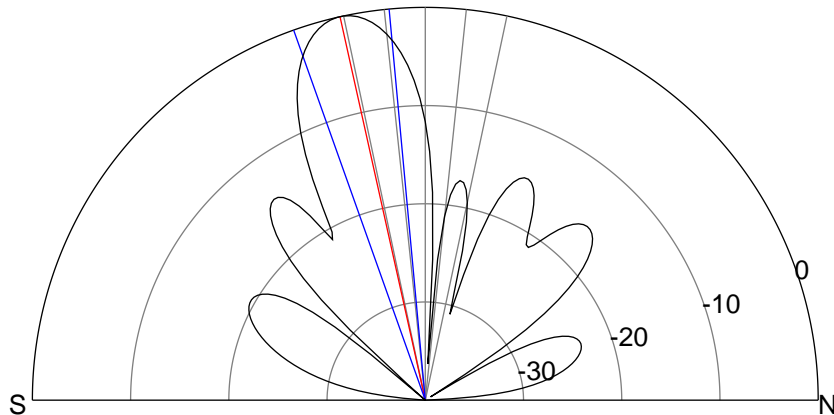
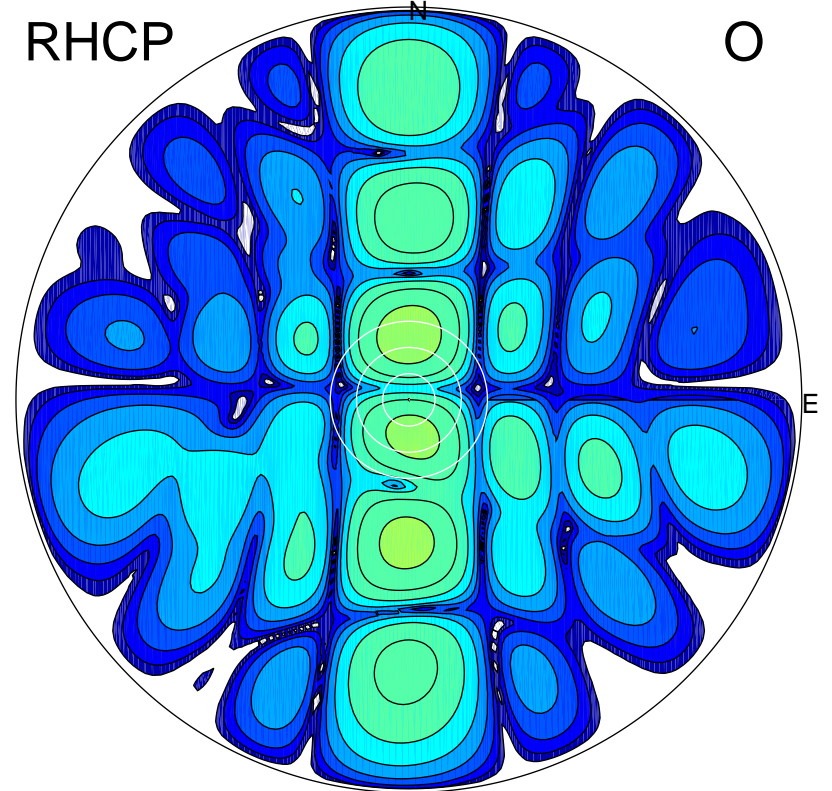
LHCP

X



RHCP

O



ERP 119.3 MW

Peak gain 21.9 dBi at Az 181 Zen 13
RHCP gain 4.0 dBi
N-S peak 21.9 dBi at Zen -12.5
N-S -3 dB beamwidth 14.3 deg.

ERP 4.0 MW

Peak gain 7.2 dBi at Az 0 Zen 15
LHCP gain -6.8 dBi
N-S peak 7.2 dBi at Zen 14.6
N-S -3 dB beamwidth 12.7 deg.