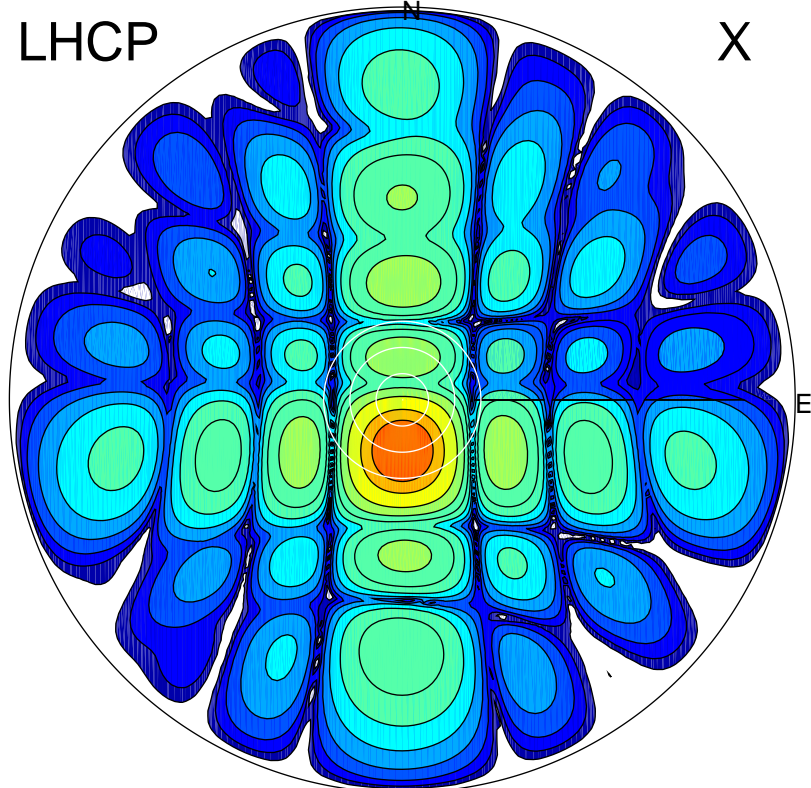


2017-03-01 18:46:32 A2 4.04000000 MHz 778.0 kW

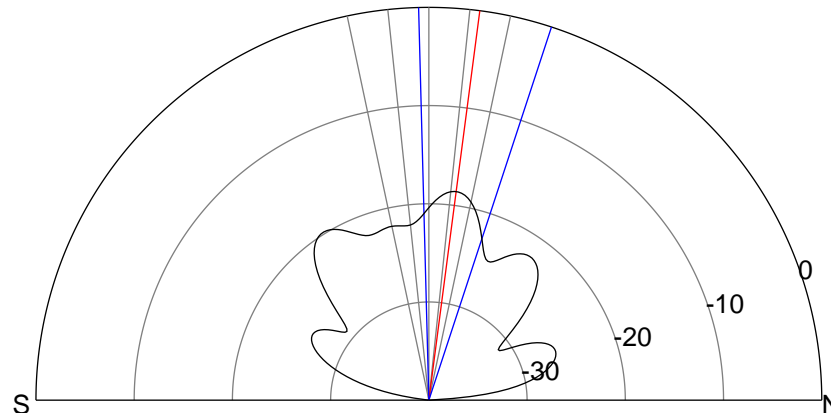
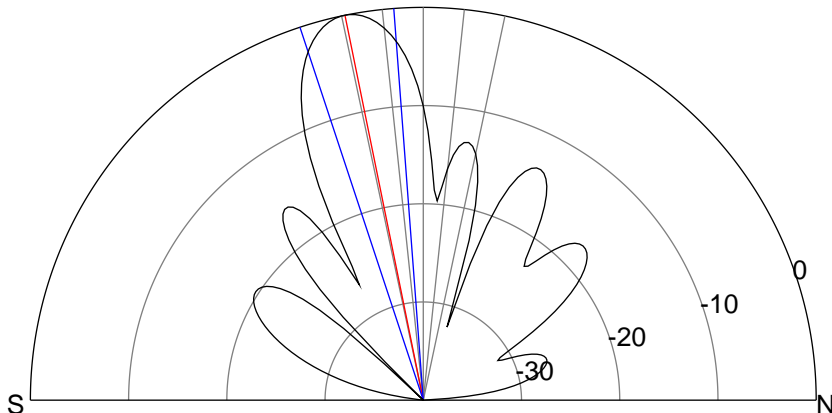
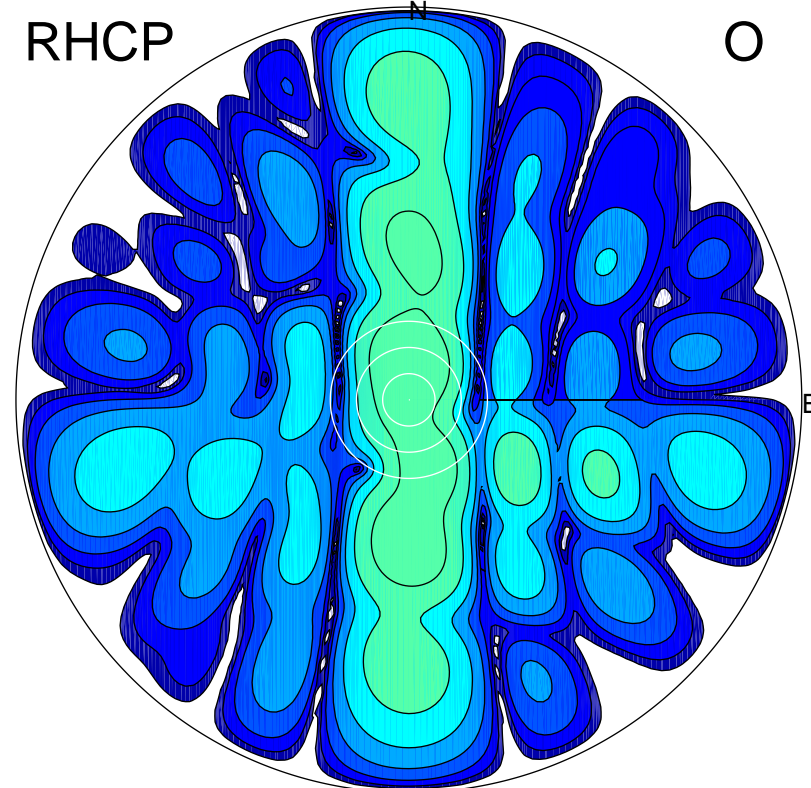
LHCP

X



RHCP

O



ERP 126.2 MW

Peak gain 22.1 dBi at Az 181 Zen 12
RHCP gain 0.1 dBi
N-S peak 22.1 dBi at Zen -11.5
N-S -3 dB beamwidth 14.0 deg.

ERP 1.8 MW

Peak gain 3.5 dBi at Az 3 Zen 7
LHCP gain 7.3 dBi
N-S peak 3.5 dBi at Zen 7.5
N-S -3 dB beamwidth 19.7 deg.