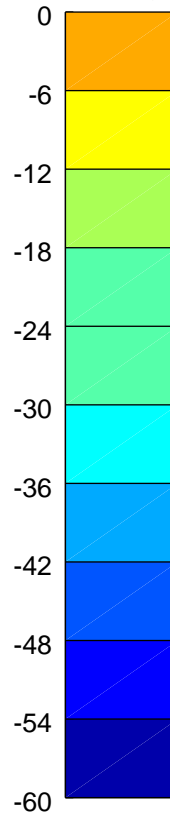
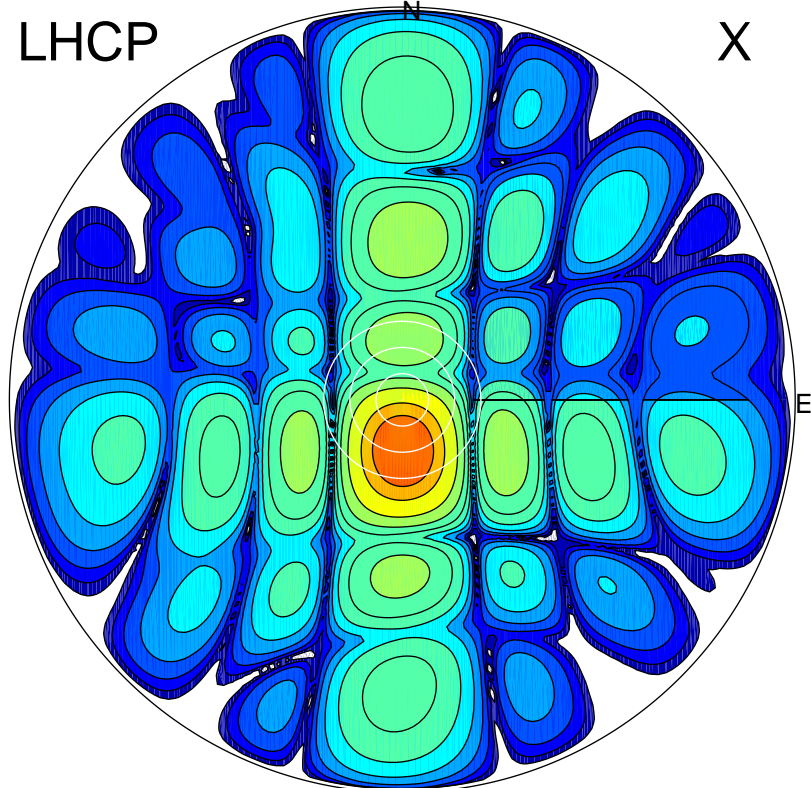


2017-03-01 18:40:32 A2 4.04000000 MHz 806.0 kW

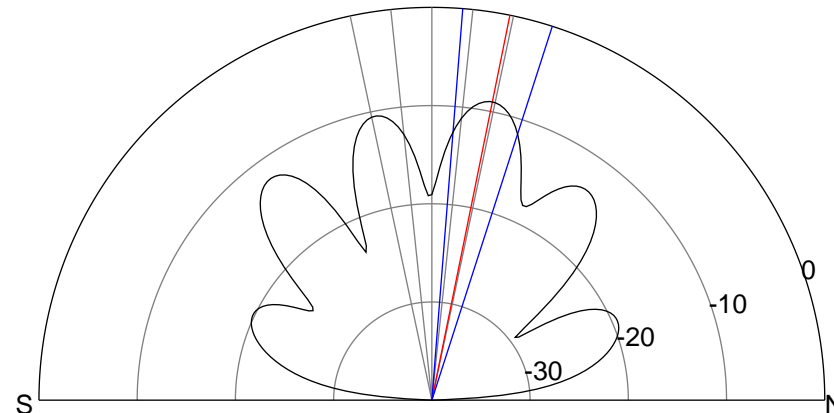
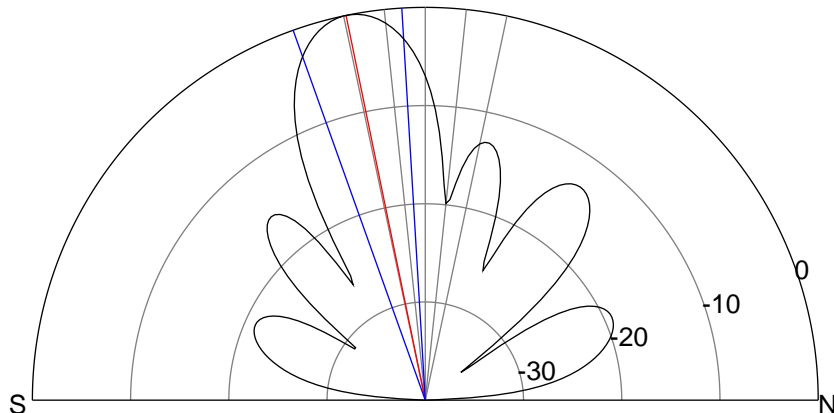
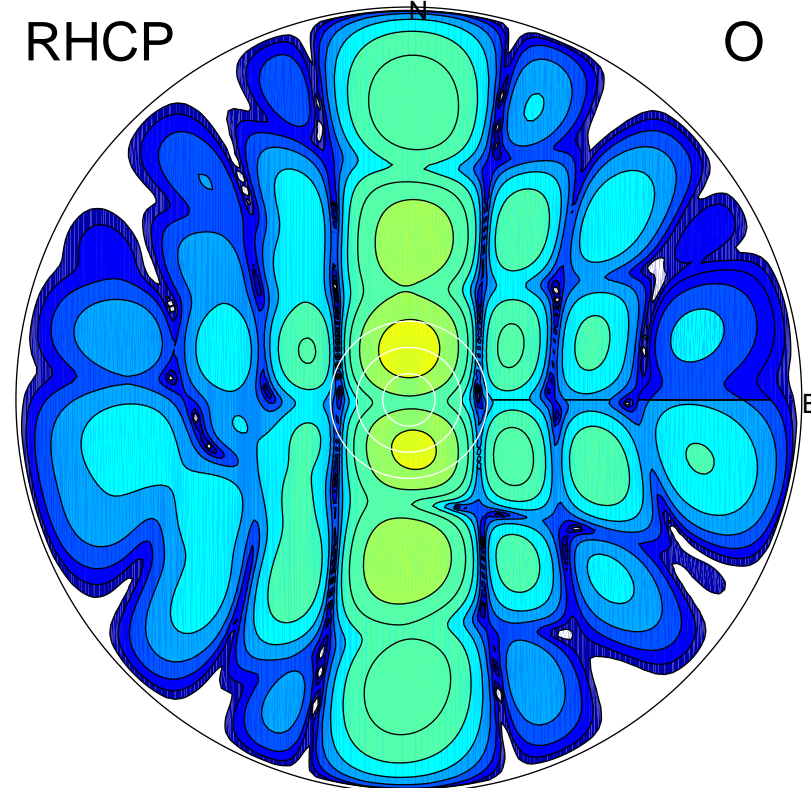
LHCP

X



RHCP

O



ERP 93.0 MW

Peak gain 20.6 dBi at Az 180 Zen 12
RHCP gain 10.1 dBi
N-S peak 20.6 dBi at Zen -11.6
N-S -3 dB beamwidth 16.2 deg.

ERP 11.7 MW

Peak gain 11.6 dBi at Az 0 Zen 11
LHCP gain 6.7 dBi
N-S peak 11.6 dBi at Zen 11.5
N-S -3 dB beamwidth 13.3 deg.