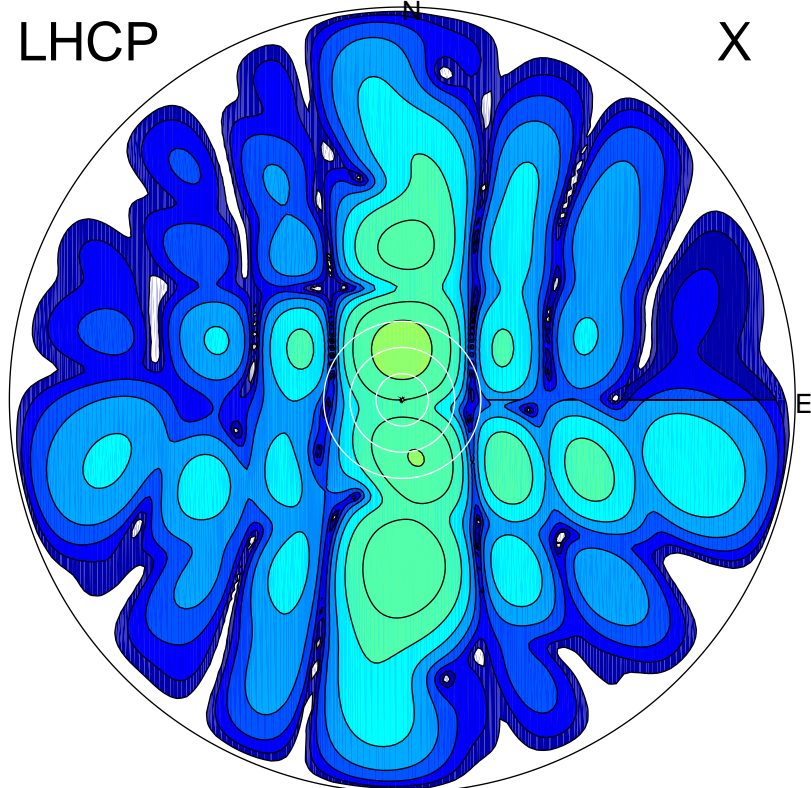


2017-03-01 12:34:25 A2 4.04000000 MHz 736.0 kW

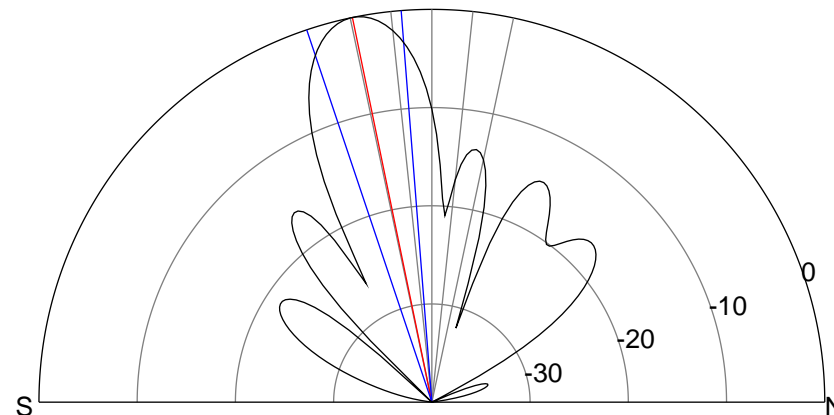
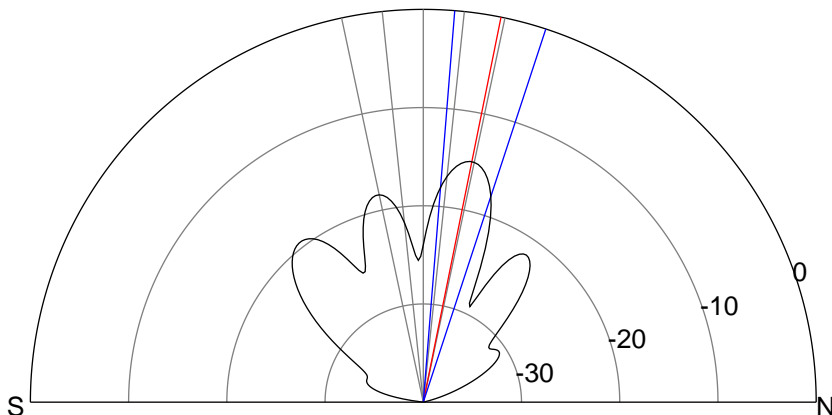
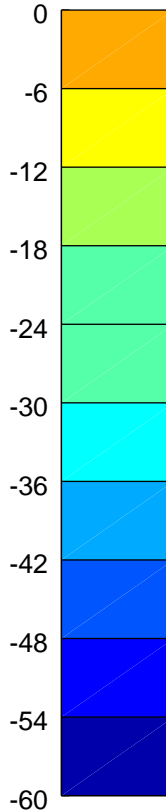
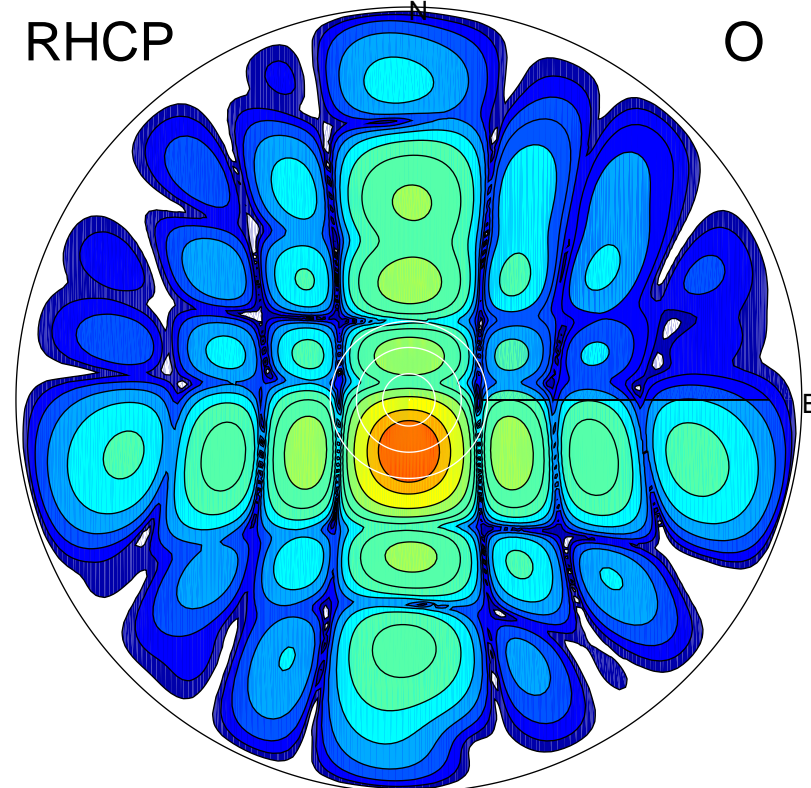
LHCP

X



RHCP

O



### ERP 3.7 MW

Peak gain 7.0 dBi at Az 0 Zen 11  
RHCP gain 8.0 dBi  
N-S peak 7.1 dBi at Zen 11.4  
N-S -3 dB beamwidth 13.6 deg.

### ERP 118.7 MW

Peak gain 22.1 dBi at Az 181 Zen 12  
LHCP gain 3.6 dBi  
N-S peak 22.1 dBi at Zen -11.7  
N-S -3 dB beamwidth 14.1 deg.