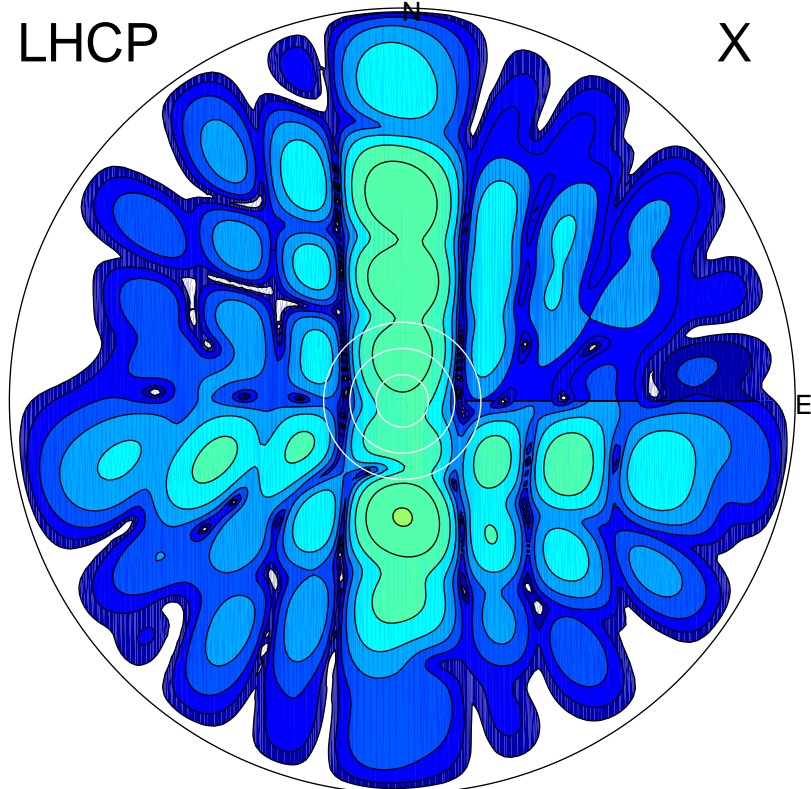


2017-03-01 10:01:40 A2 4.91280000 MHz 790.0 kW

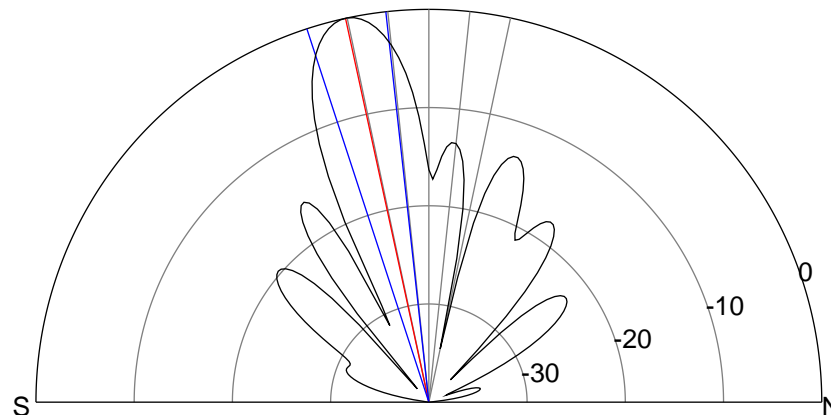
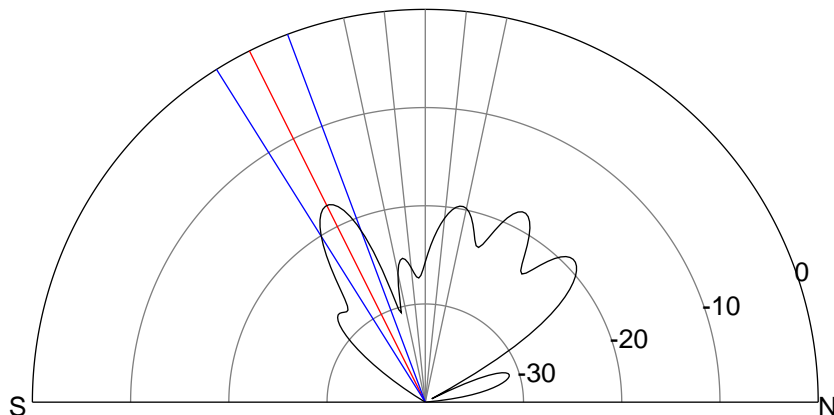
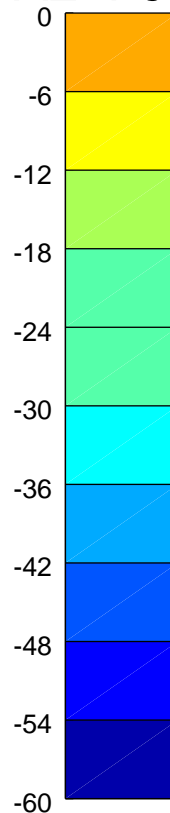
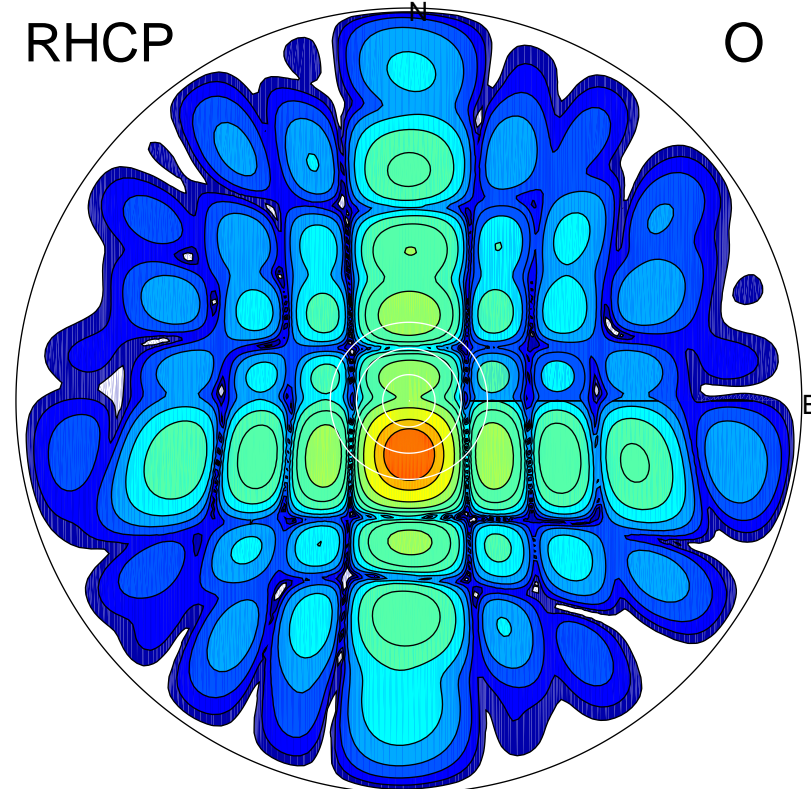
LHCP

X



RHCP

O



ERP 3.1 MW

Peak gain 5.9 dBi at Az 180 Zen 27
RHCP gain -7.7 dBi
N-S peak 5.9 dBi at Zen -26.6
N-S -3 dB beamwidth 11.6 deg.

ERP 178.9 MW

Peak gain 23.6 dBi at Az 181 Zen 12
LHCP gain -3.1 dBi
N-S peak 23.6 dBi at Zen -12.2
N-S -3 dB beamwidth 11.8 deg.