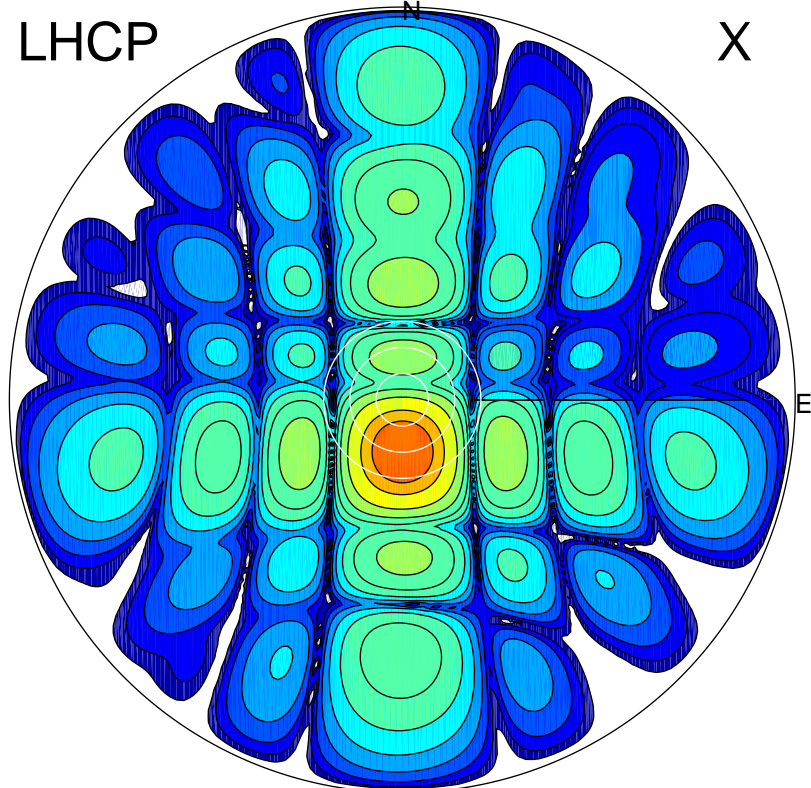


2017-02-28 17:10:25 A2 4.04000000 MHz 773.0 kW

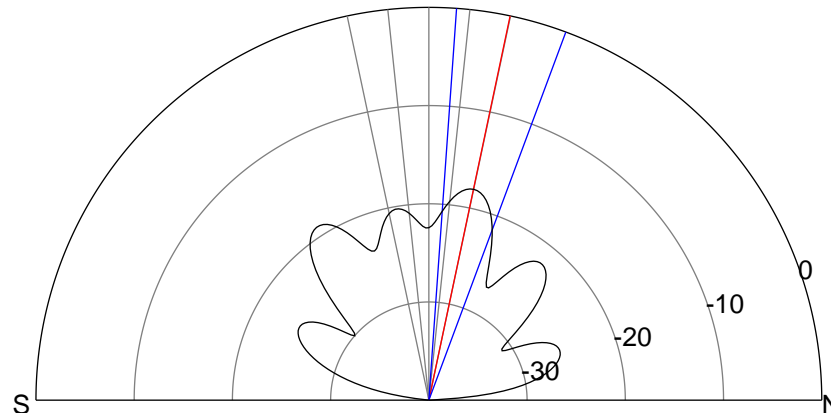
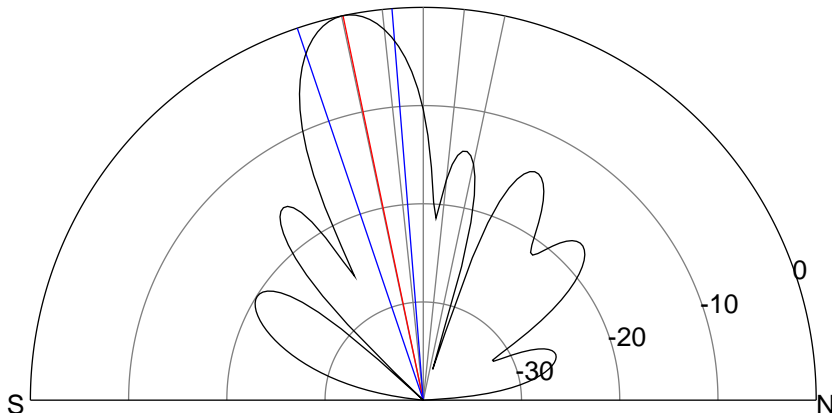
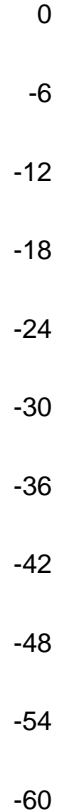
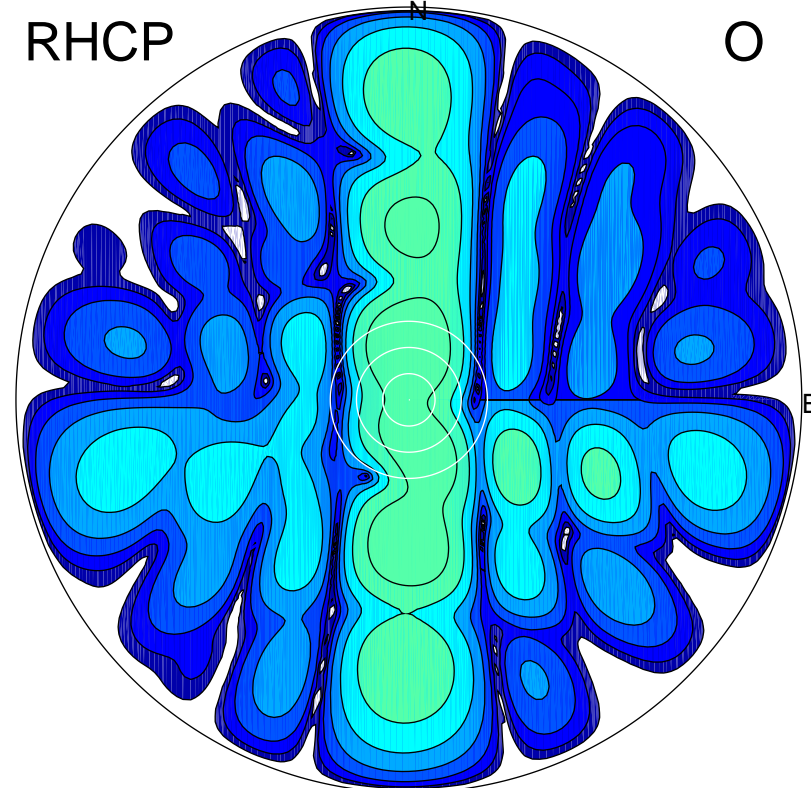
LHCP

X



RHCP

O



ERP 125.1 MW

Peak gain 22.1 dBi at Az 181 Zen 12
RHCP gain 1.4 dBi
N-S peak 22.1 dBi at Zen -11.8
N-S -3 dB beamwidth 14.1 deg.

ERP 2.0 MW

Peak gain 4.0 dBi at Az 358 Zen 12
LHCP gain 6.7 dBi
N-S peak 4.0 dBi at Zen 11.9
N-S -3 dB beamwidth 16.4 deg.