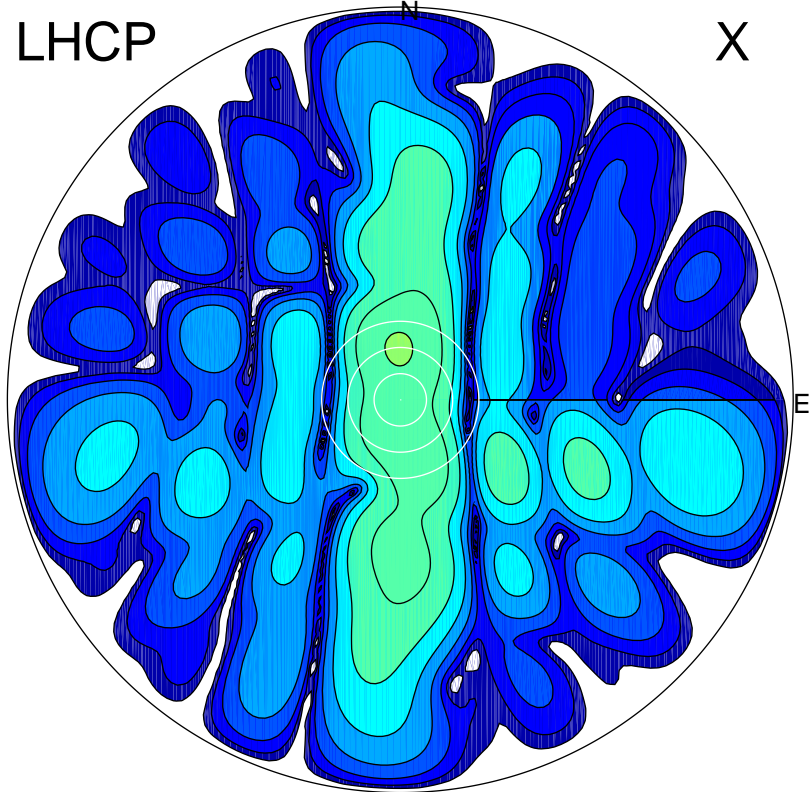


2017-02-28 17:02:35 A2 4.04000000 MHz 780.0 kW

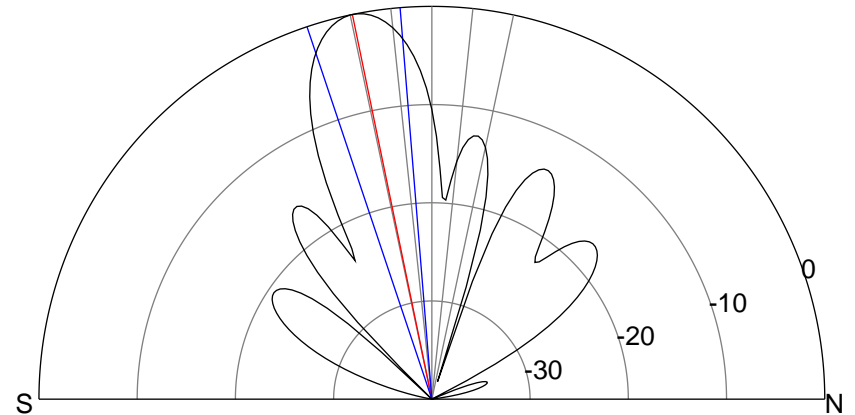
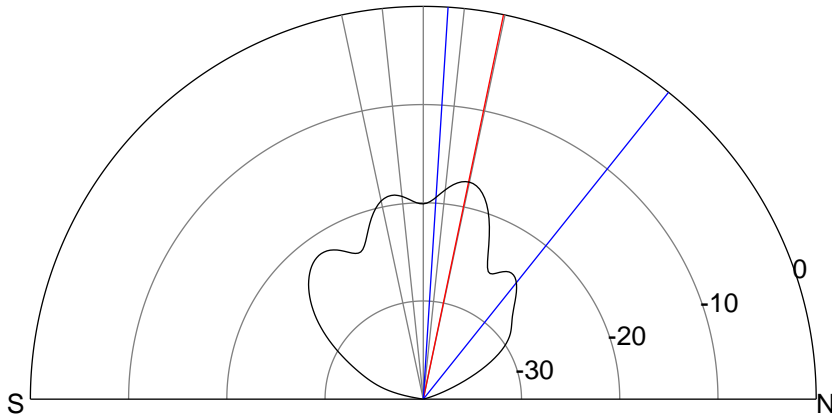
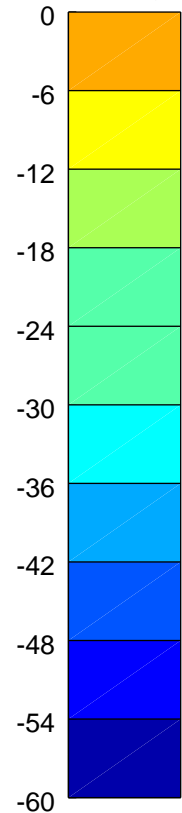
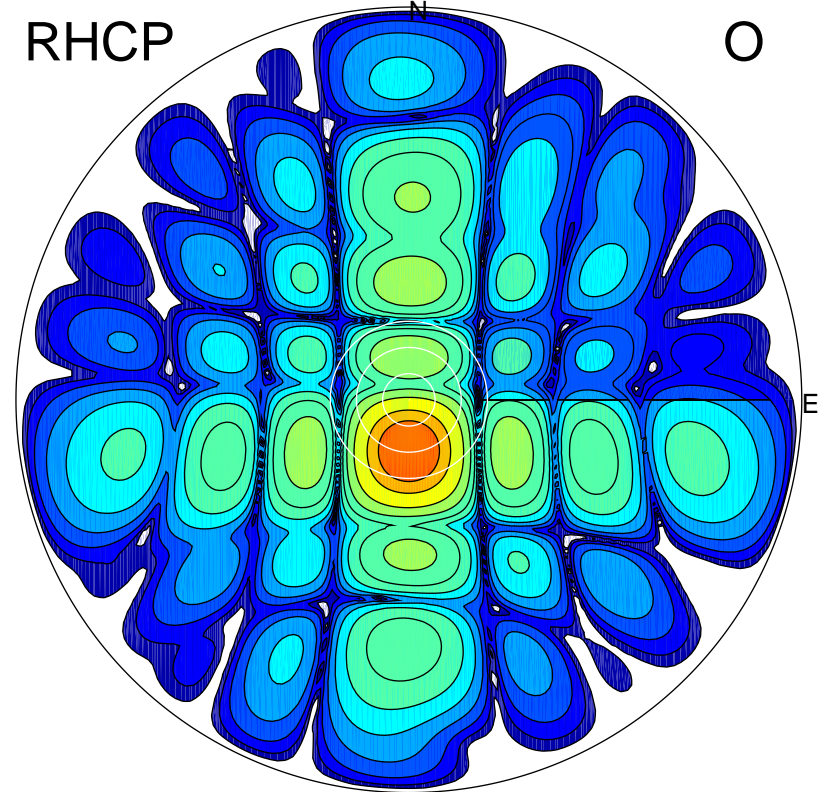
LHCP

X



RHCP

O



### ERP 2.3 MW

Peak gain 4.7 dBi at Az 357 Zen 12  
RHCP gain 8.4 dBi  
N-S peak 4.7 dBi at Zen 11.8  
N-S -3 dB beamwidth 35.0 deg.

### ERP 127.3 MW

Peak gain 22.1 dBi at Az 180 Zen 12  
LHCP gain 2.8 dBi  
N-S peak 22.1 dBi at Zen -11.7  
N-S -3 dB beamwidth 13.9 deg.