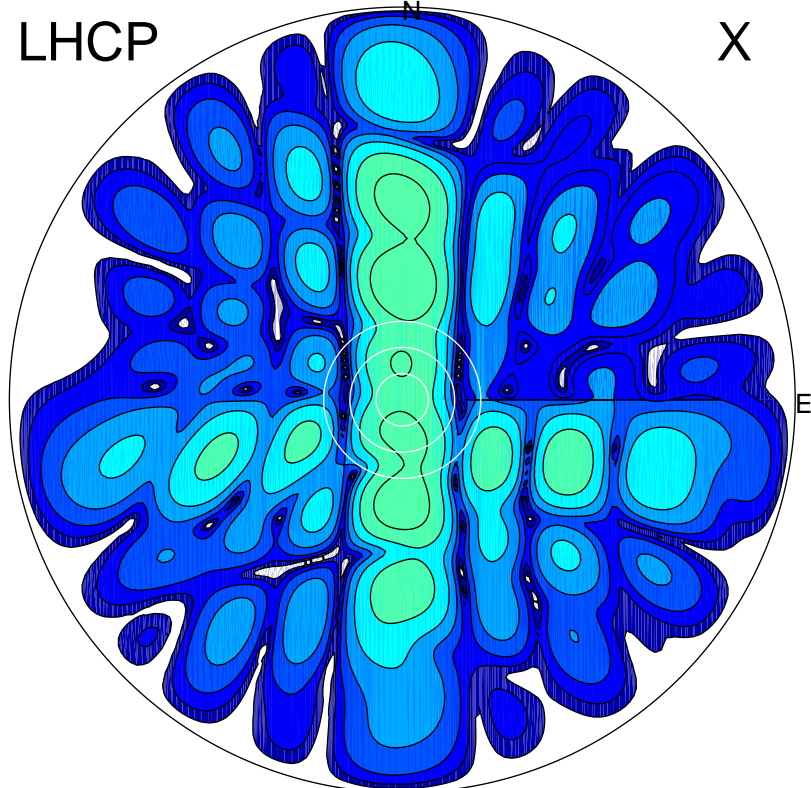


2017-02-28 14:44:57 A2 4.91280000 MHz 302.0 kW

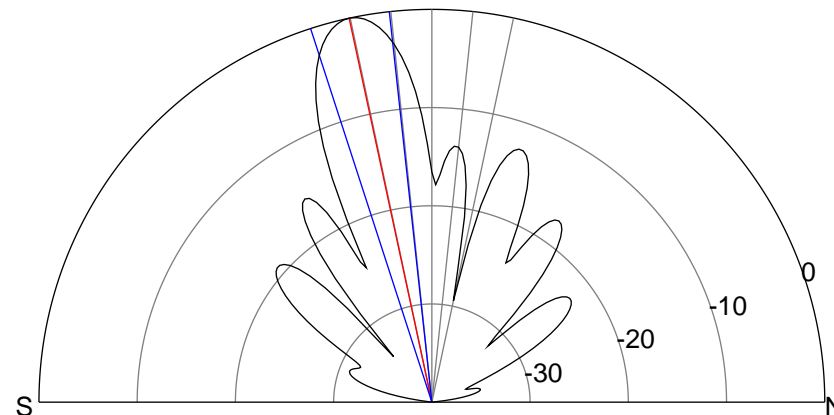
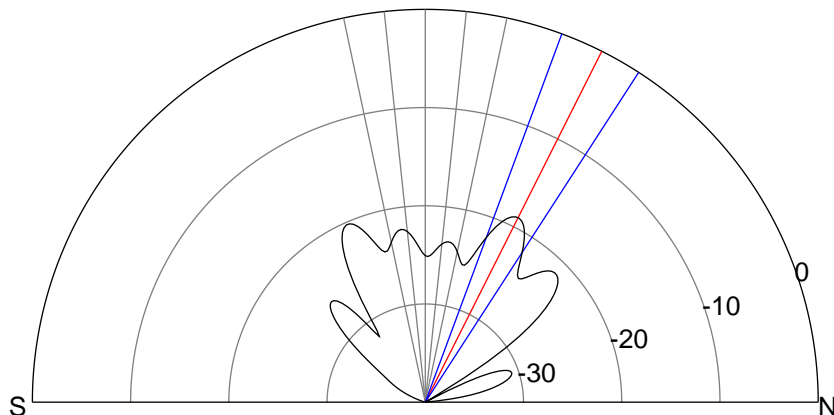
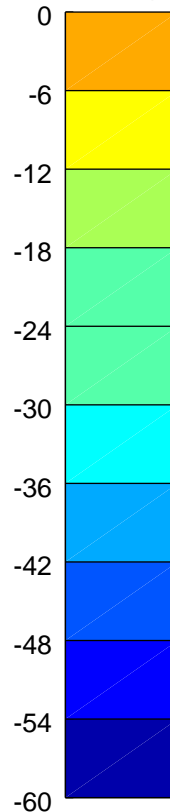
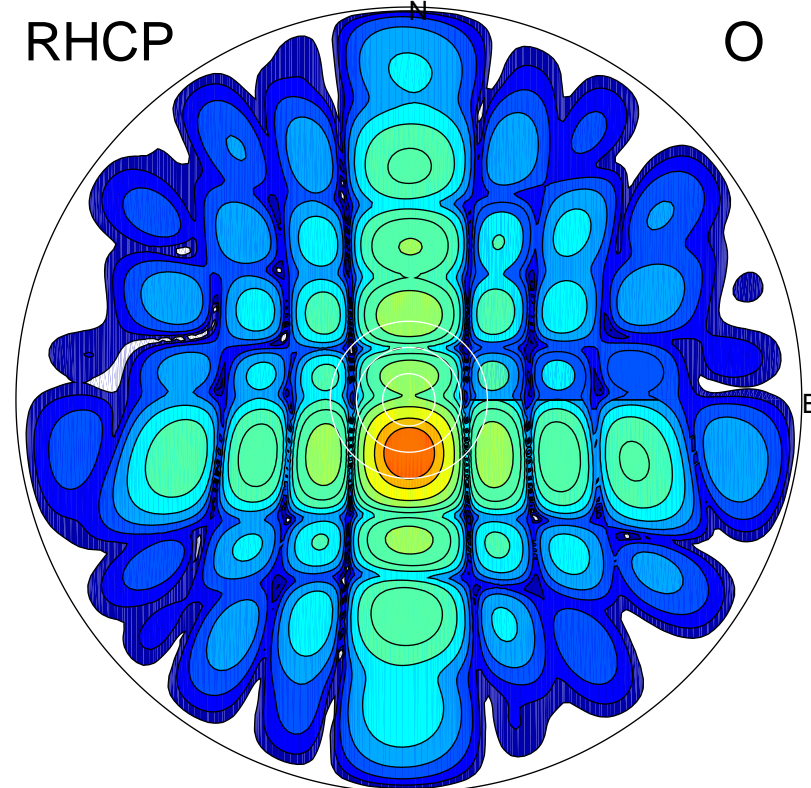
LHCP

X



RHCP

O



ERP 0.9 MW

Peak gain 4.6 dBi at Az 1 Zen 27
RHCP gain 1.2 dBi
N-S peak 4.6 dBi at Zen 26.7
N-S -3 dB beamwidth 12.6 deg.

ERP 69.3 MW

Peak gain 23.6 dBi at Az 180 Zen 12
LHCP gain 0.3 dBi
N-S peak 23.6 dBi at Zen -12.2
N-S -3 dB beamwidth 11.8 deg.