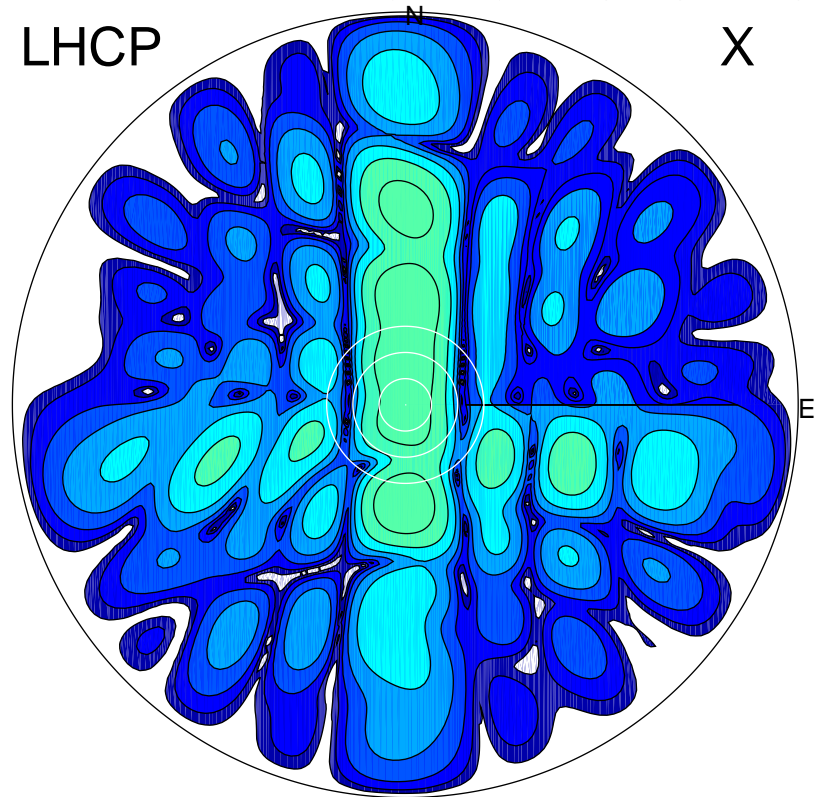


2017-02-28 13:44:57 A2 4.91280000 MHz 304.0 kW

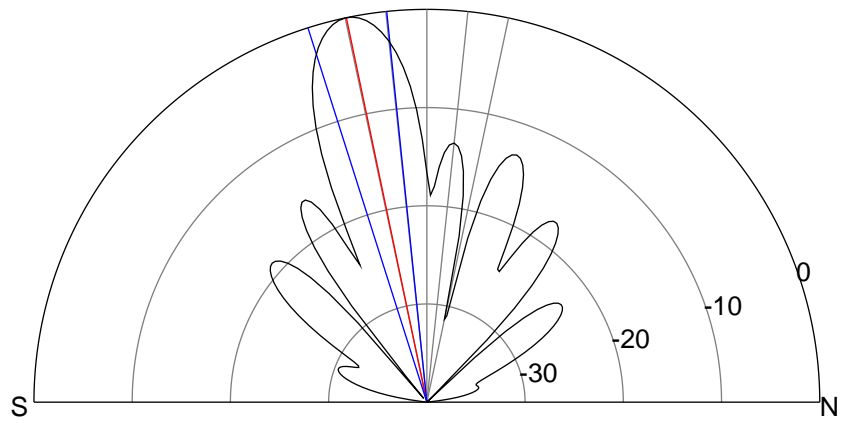
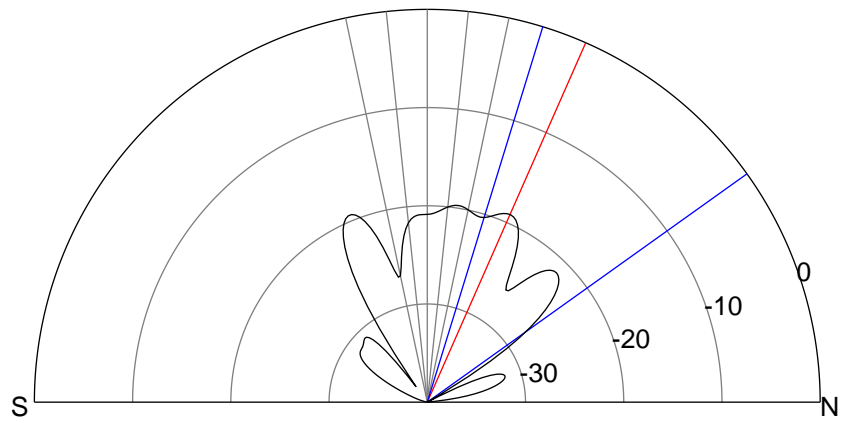
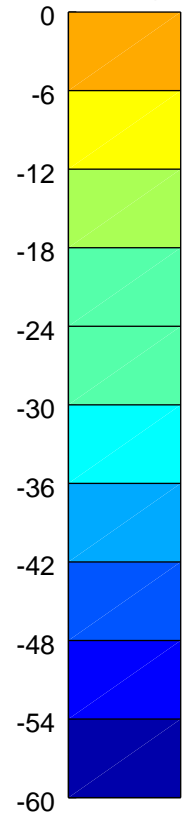
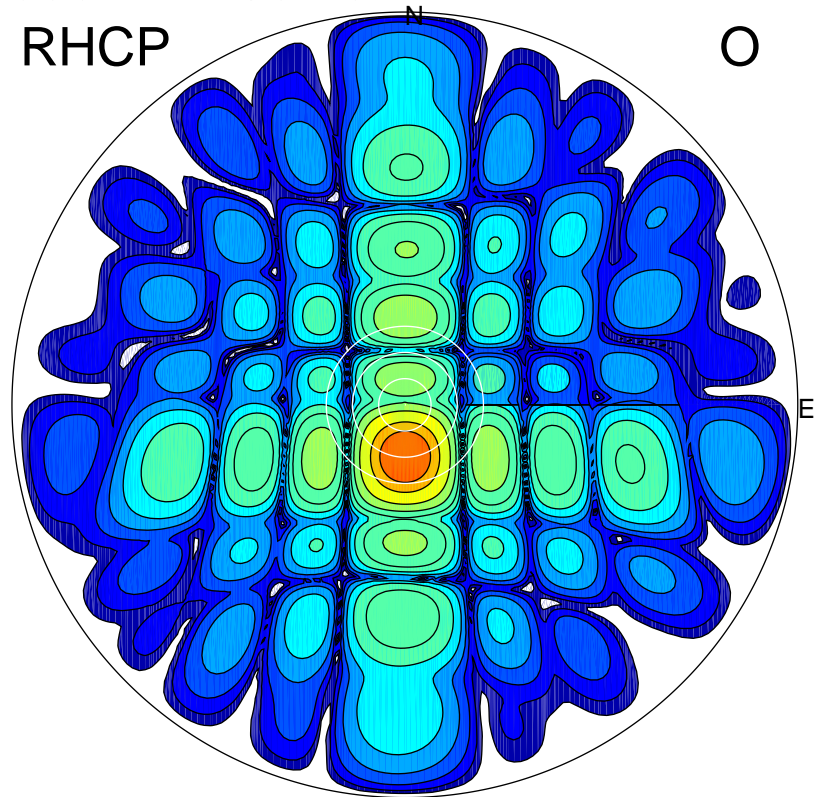
LHCP

X



RHCP

O



ERP 0.9 MW

Peak gain 4.5 dBi at Az 1 Zen 24
RHCP gain 7.6 dBi
N-S peak 4.5 dBi at Zen 23.8
N-S -3 dB beamwidth 37.4 deg.

ERP 69.8 MW

Peak gain 23.6 dBi at Az 180 Zen 12
LHCP gain -3.2 dBi
N-S peak 23.6 dBi at Zen -11.8
N-S -3 dB beamwidth 11.8 deg.