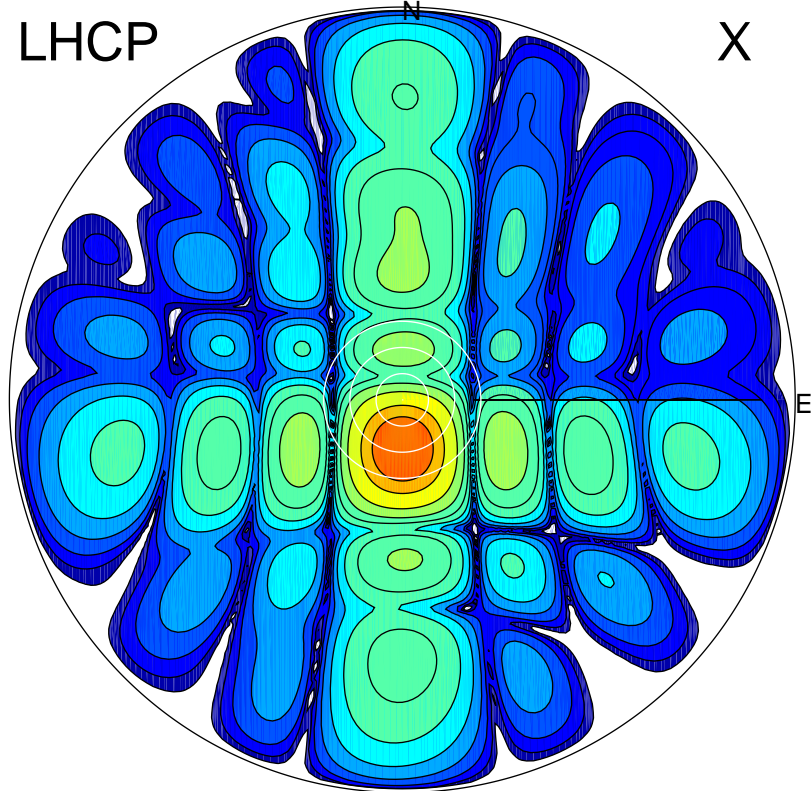


2017-02-27 17:26:05 A2 4.04000000 MHz 745.0 kW

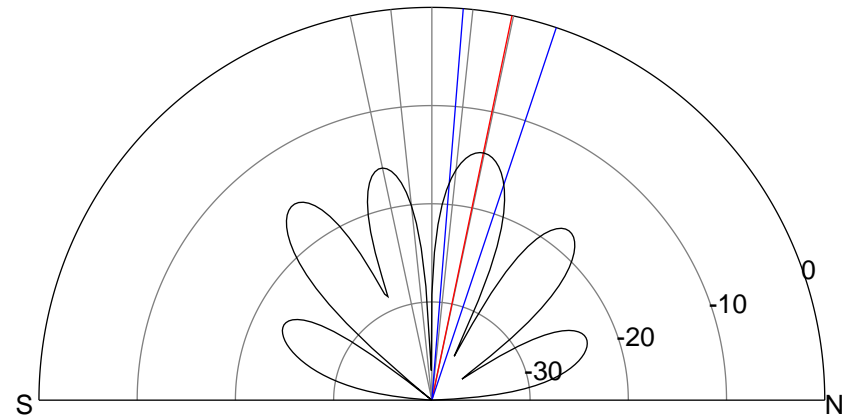
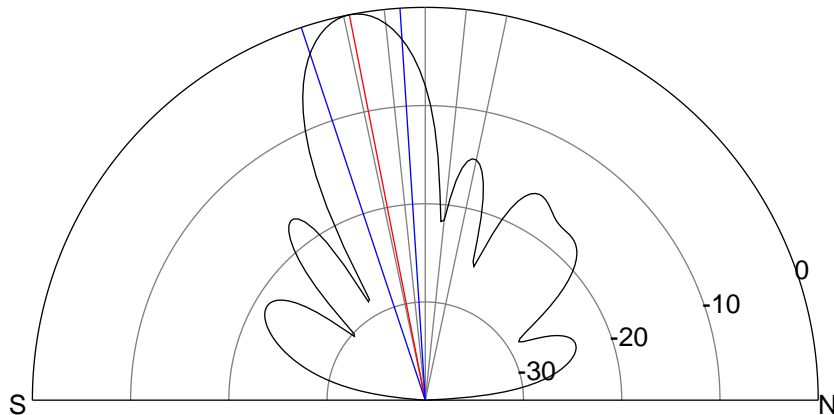
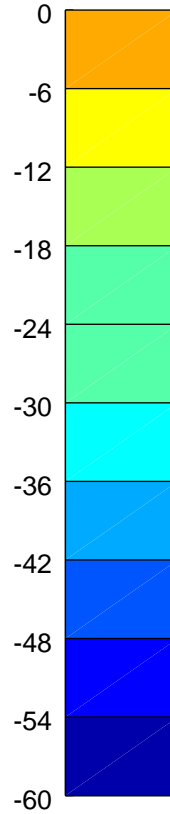
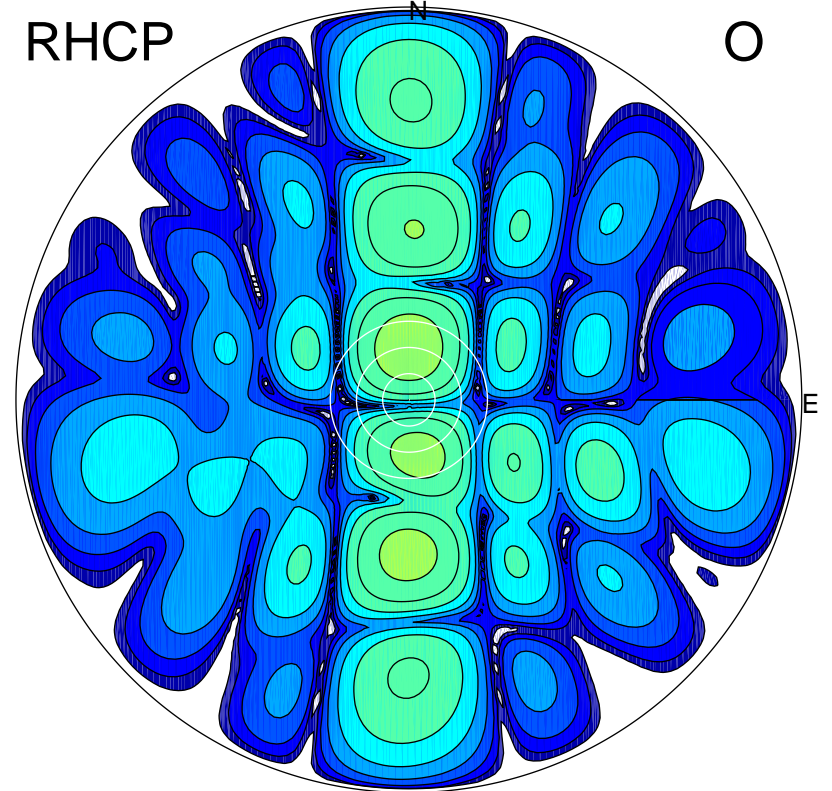
LHCP

X



RHCP

O



ERP 112.5 MW

Peak gain 21.8 dBi at Az 181 Zen 11
RHCP gain 5.7 dBi
N-S peak 21.8 dBi at Zen -11.1
N-S -3 dB beamwidth 14.7 deg.

ERP 4.2 MW

Peak gain 7.5 dBi at Az 359 Zen 12
LHCP gain 6.8 dBi
N-S peak 7.5 dBi at Zen 11.8
N-S -3 dB beamwidth 13.9 deg.