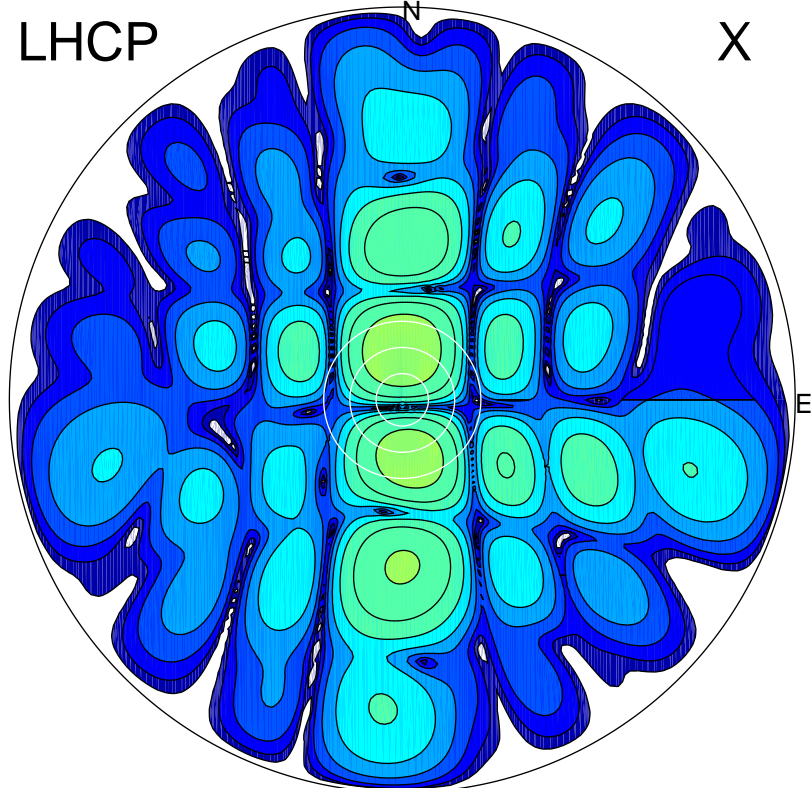


2017-02-27 17:02:35 A2 4.04000000 MHz 743.0 kW

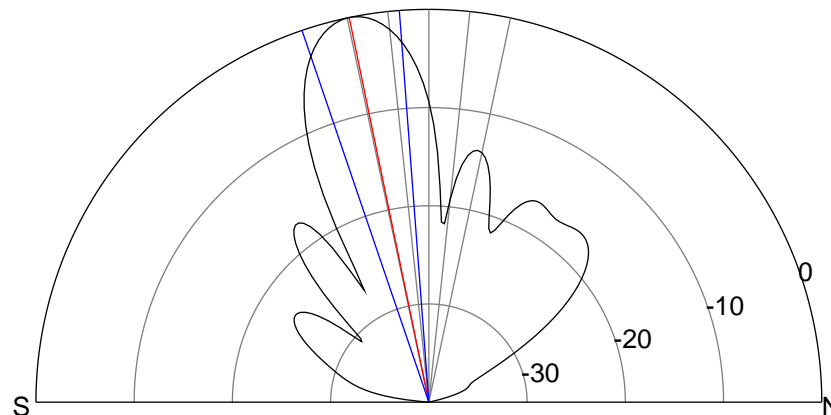
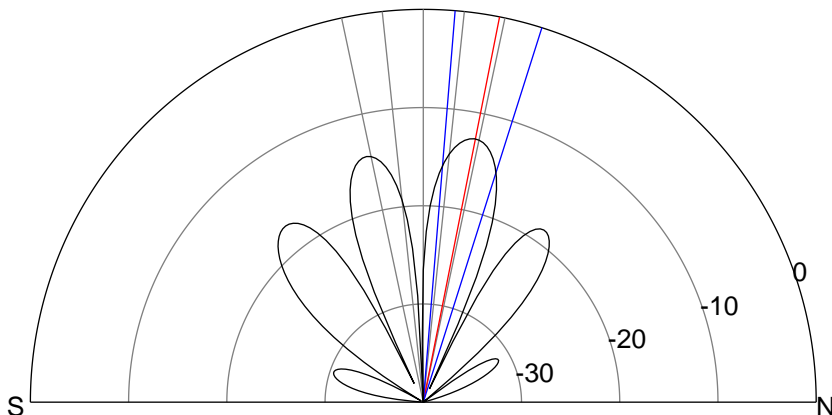
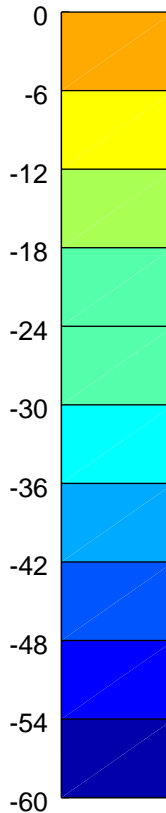
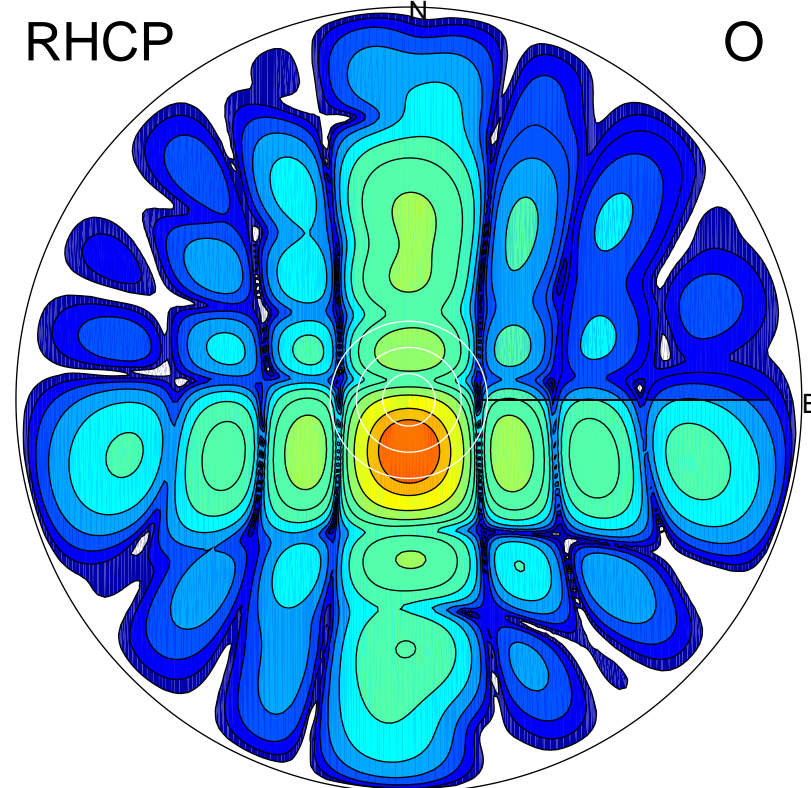
LHCP

X



RHCP

O



ERP 6.1 MW

Peak gain 9.1 dBi at Az 359 Zen 11
RHCP gain 7.9 dBi
N-S peak 9.1 dBi at Zen 11.2
N-S -3 dB beamwidth 12.9 deg.

ERP 112.8 MW

Peak gain 21.8 dBi at Az 180 Zen 12
LHCP gain 7.4 dBi
N-S peak 21.8 dBi at Zen -11.7
N-S -3 dB beamwidth 14.5 deg.