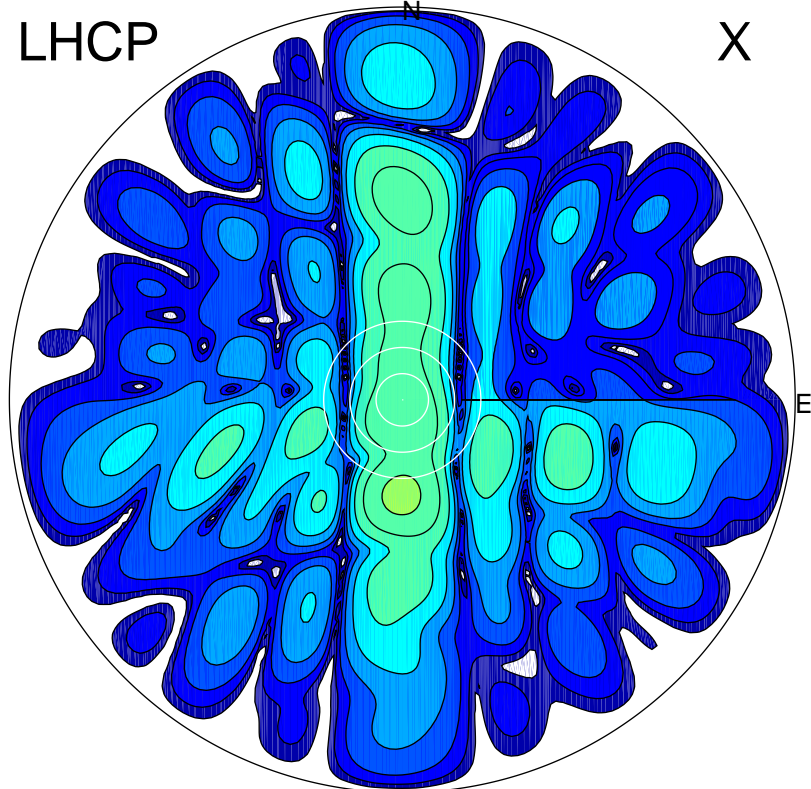


2017-02-27 14:34:57 A2 4.91280000 MHz 312.0 kW

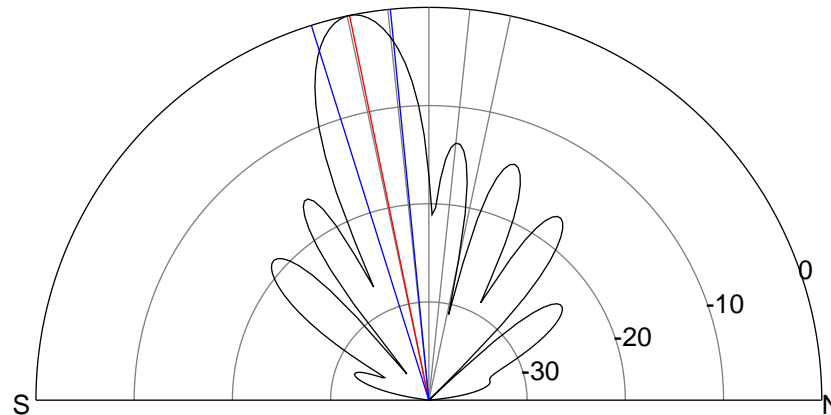
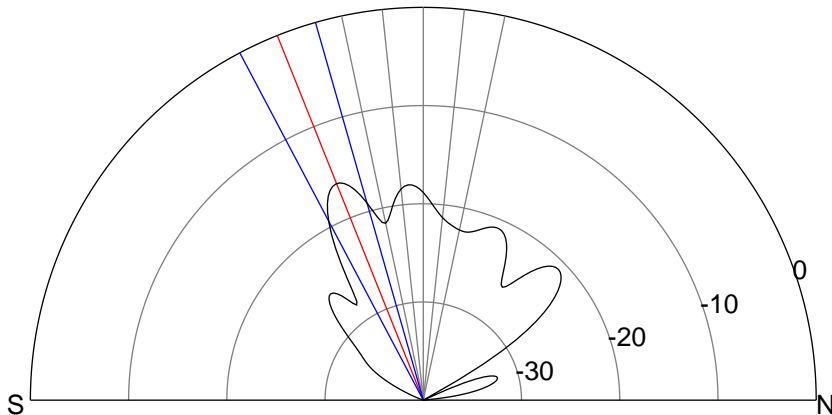
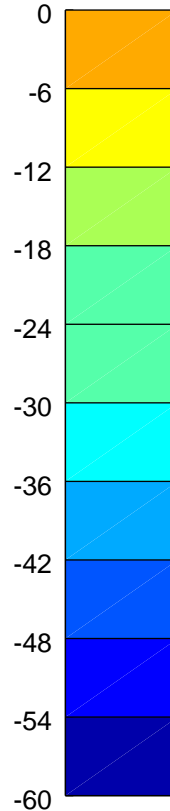
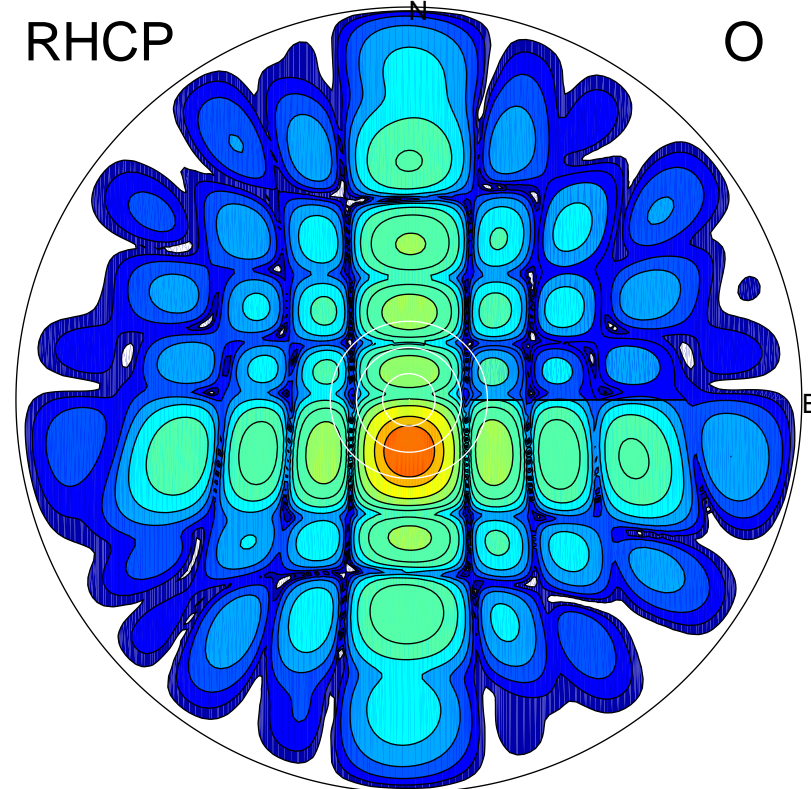
LHCP

X



RHCP

O



### ERP 1.7 MW

Peak gain 7.3 dBi at Az 181 Zen 22  
RHCP gain 13.4 dBi  
N-S peak 7.3 dBi at Zen -21.8  
N-S -3 dB beamwidth 11.9 deg.

### ERP 71.2 MW

Peak gain 23.6 dBi at Az 181 Zen 12  
LHCP gain 1.9 dBi  
N-S peak 23.6 dBi at Zen -11.6  
N-S -3 dB beamwidth 11.8 deg.