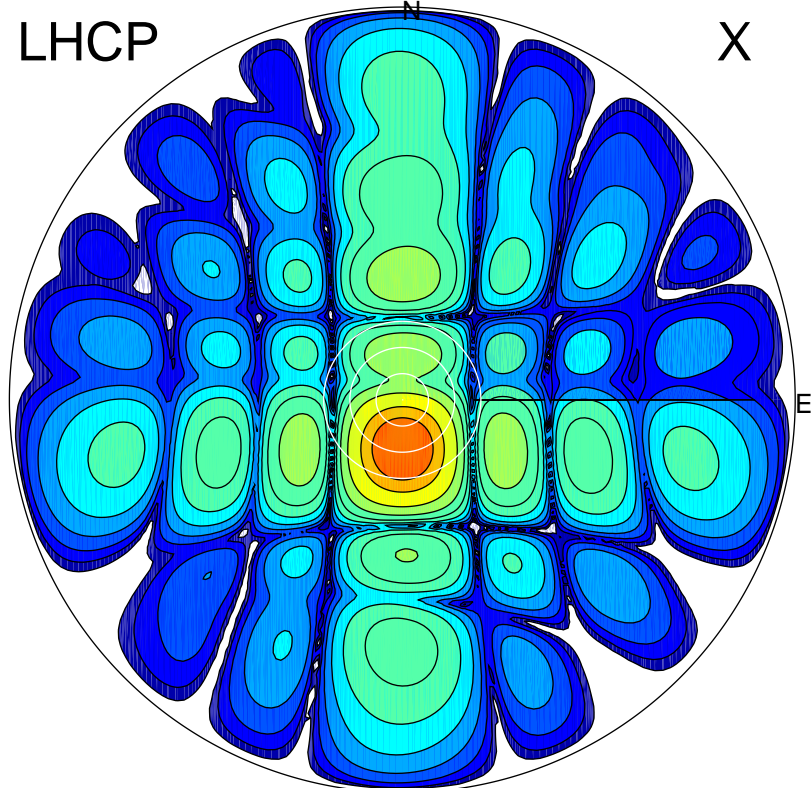


2017-02-23 17:45:40 A2 4.04000000 MHz 769.0 kW

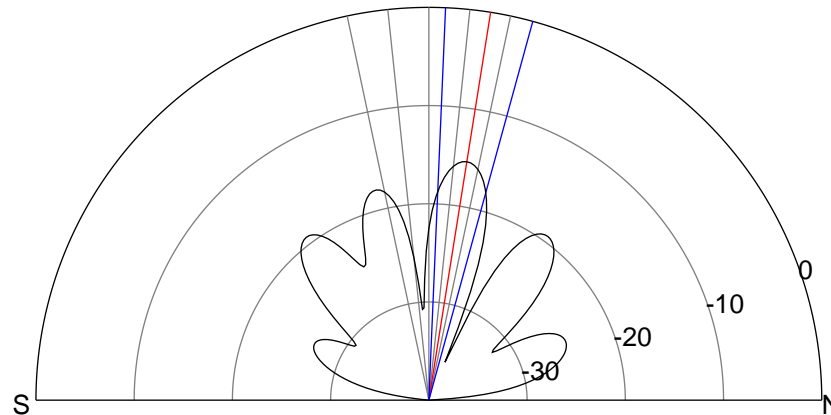
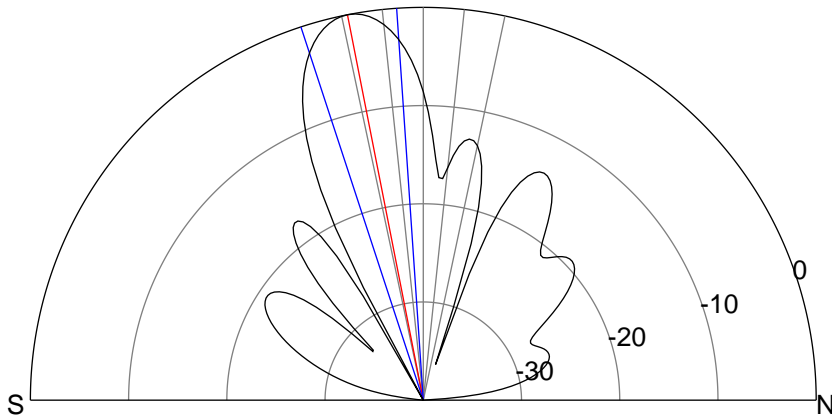
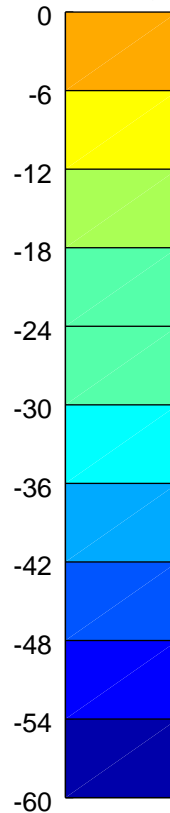
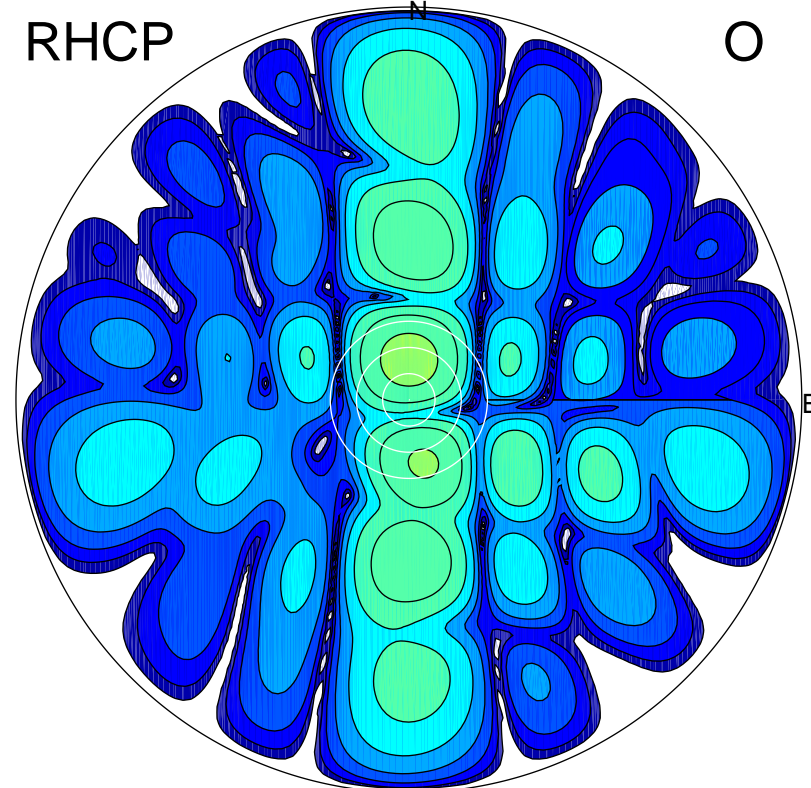
LHCP

X



RHCP

O



ERP 121.7 MW

Peak gain 22.0 dBi at Az 181 Zen 11
RHCP gain 3.1 dBi
N-S peak 22.0 dBi at Zen -11.1
N-S -3 dB beamwidth 14.3 deg.

ERP 3.5 MW

Peak gain 6.6 dBi at Az 359 Zen 9
LHCP gain 8.7 dBi
N-S peak 6.6 dBi at Zen 9.0
N-S -3 dB beamwidth 12.9 deg.