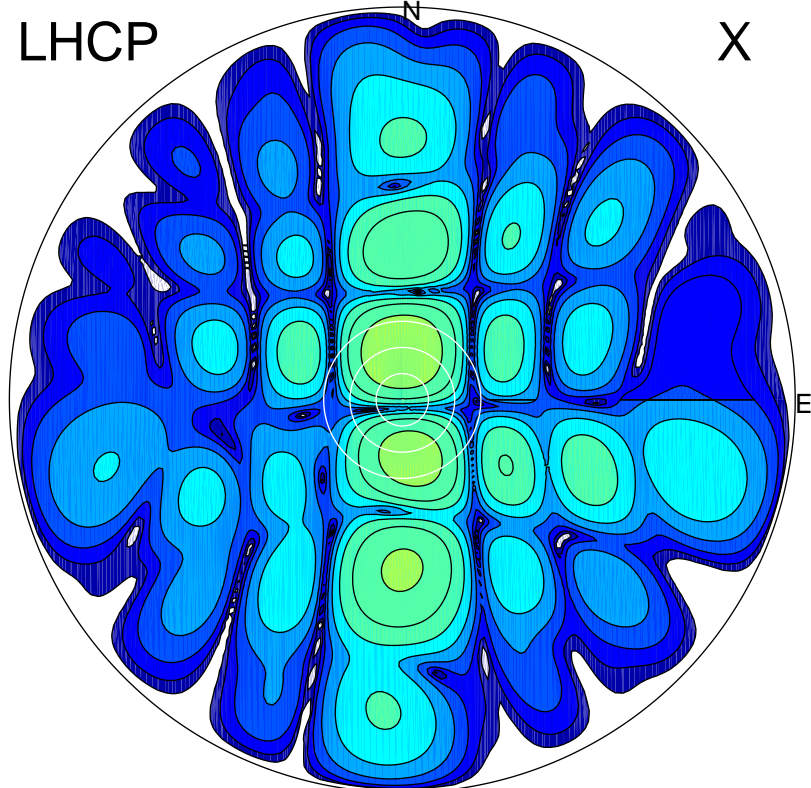
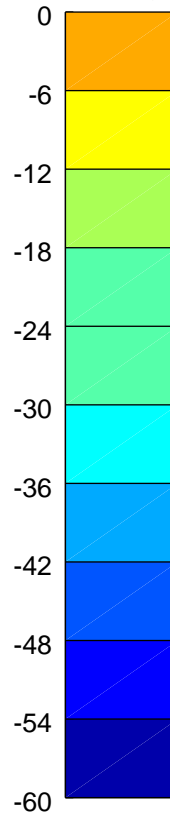


2017-02-23 16:03:30 A2 4.04000000 MHz 747.0 kW

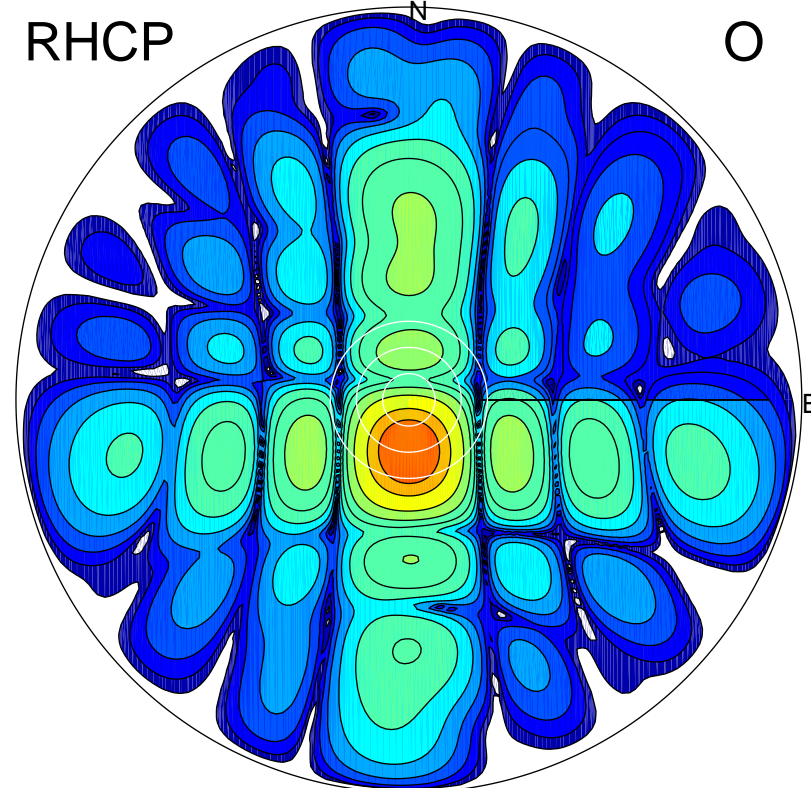
LHCP



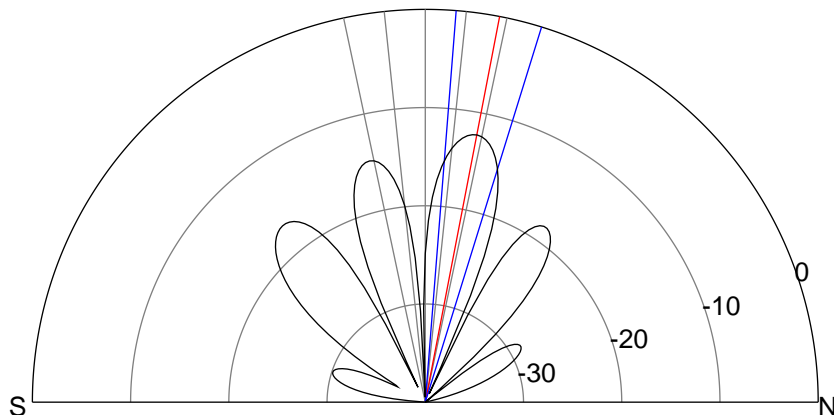
X



RHCP

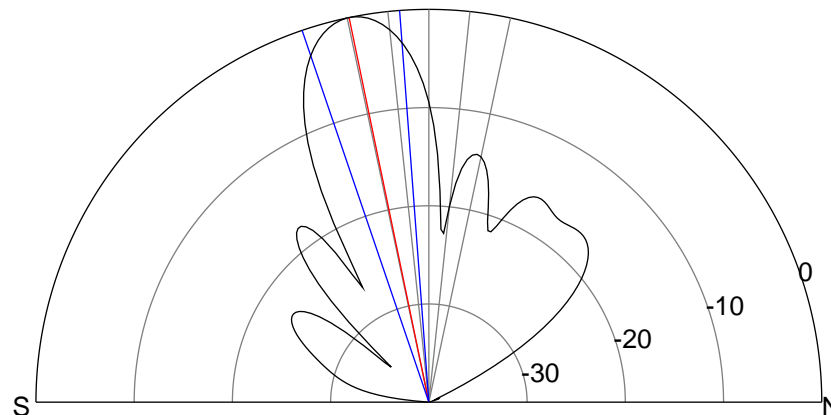


O



ERP 6.7 MW

Peak gain 9.5 dBi at Az 0 Zen 11
RHCP gain 7.5 dBi
N-S peak 9.5 dBi at Zen 10.9
N-S -3 dB beamwidth 12.7 deg.



ERP 113.0 MW

Peak gain 21.8 dBi at Az 180 Zen 12
LHCP gain 6.9 dBi
N-S peak 21.8 dBi at Zen -11.7
N-S -3 dB beamwidth 14.5 deg.