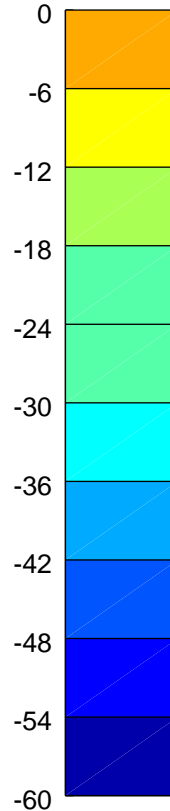
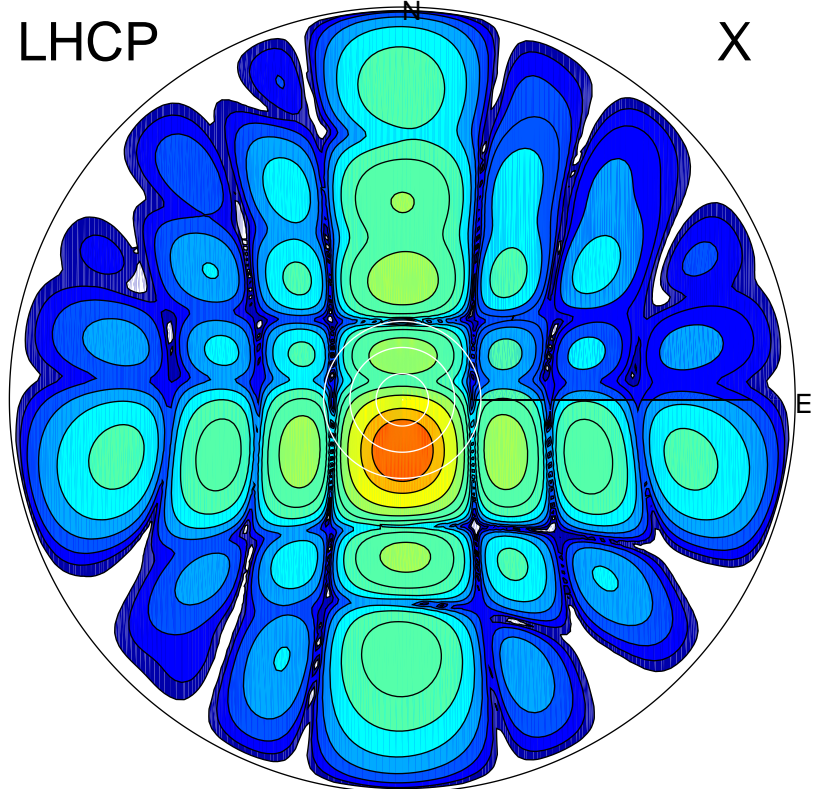


2017-02-22 16:27:00 A2 4.04000000 MHz 768.0 kW

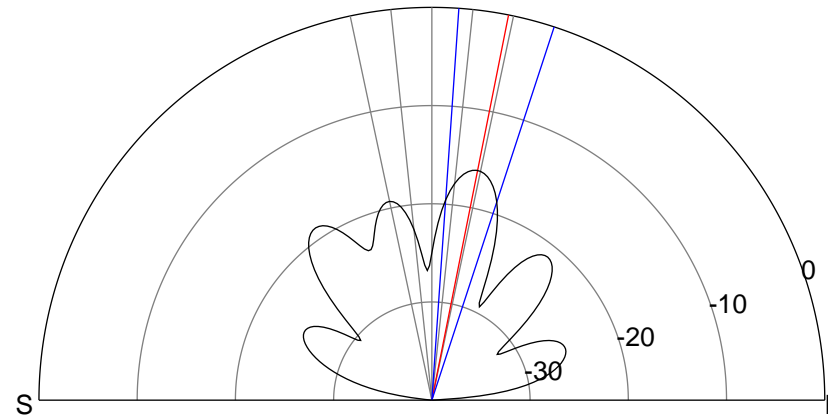
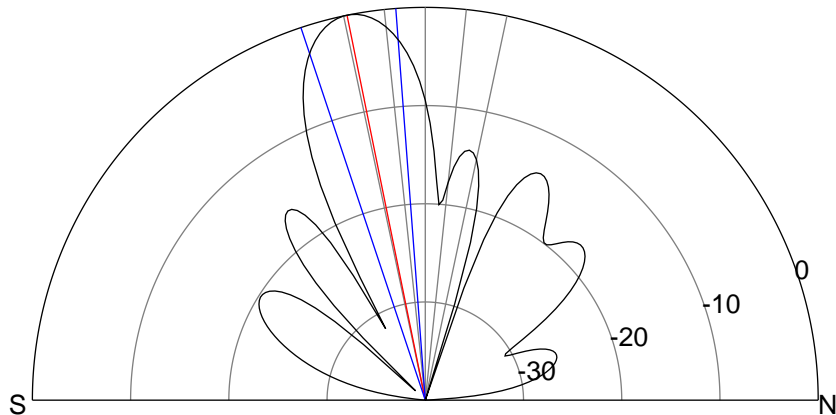
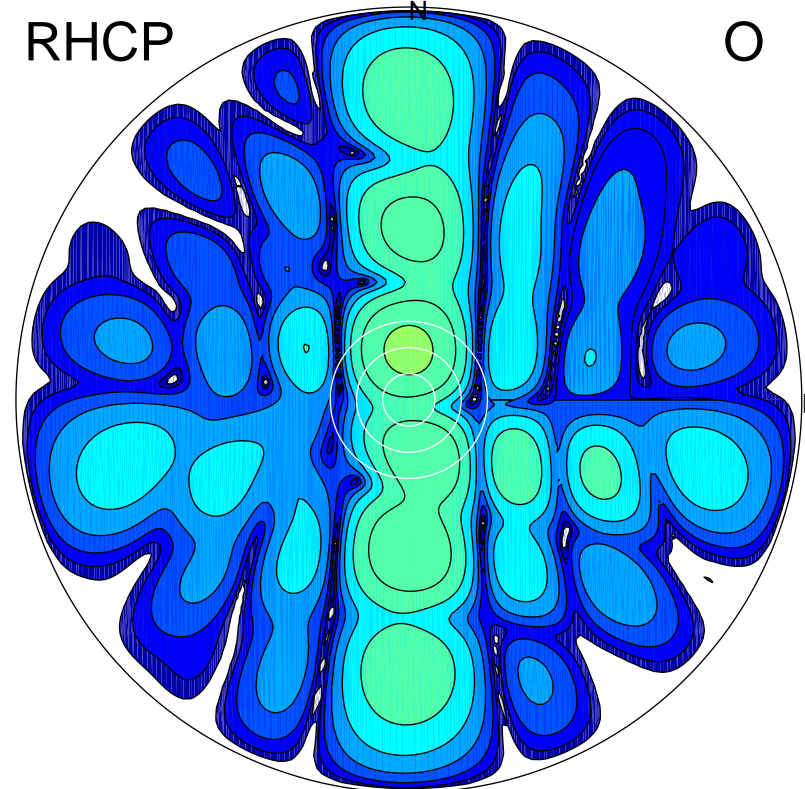
LHCP

X



RHCP

O



ERP 122.8 MW

Peak gain 22.0 dBi at Az 180 Zen 11
RHCP gain 2.6 dBi
N-S peak 22.1 dBi at Zen -11.5
N-S -3 dB beamwidth 14.1 deg.

ERP 3.0 MW

Peak gain 5.9 dBi at Az 0 Zen 11
LHCP gain 7.7 dBi
N-S peak 5.9 dBi at Zen 11.3
N-S -3 dB beamwidth 14.2 deg.