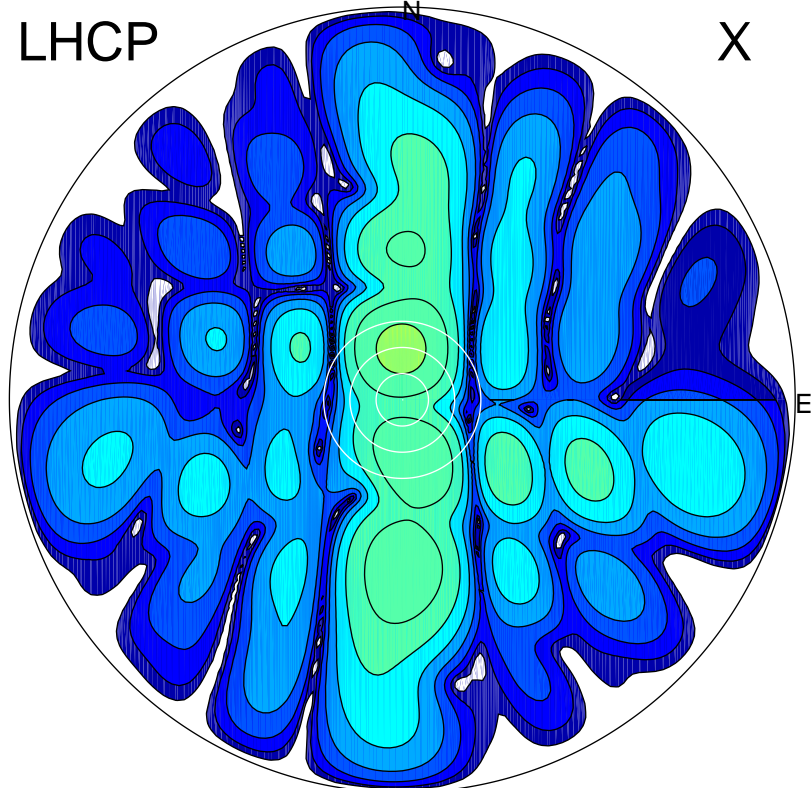


2017-02-22 15:08:20 A2 4.04000000 MHz 782.0 kW

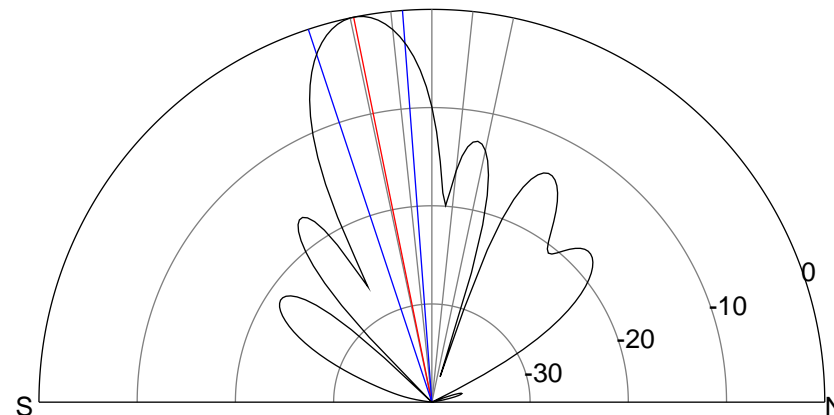
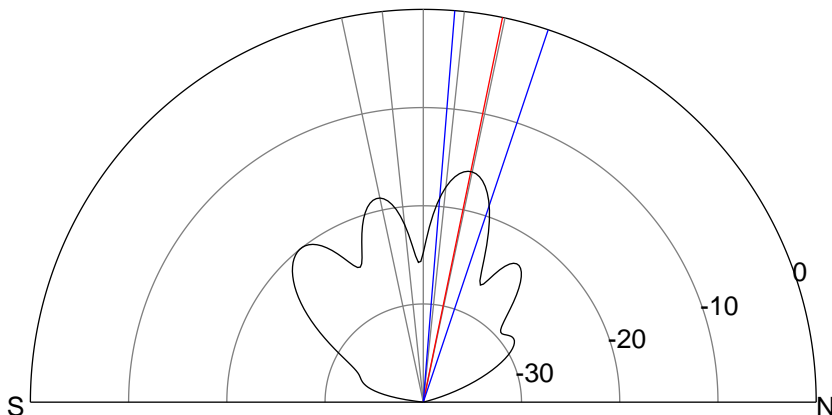
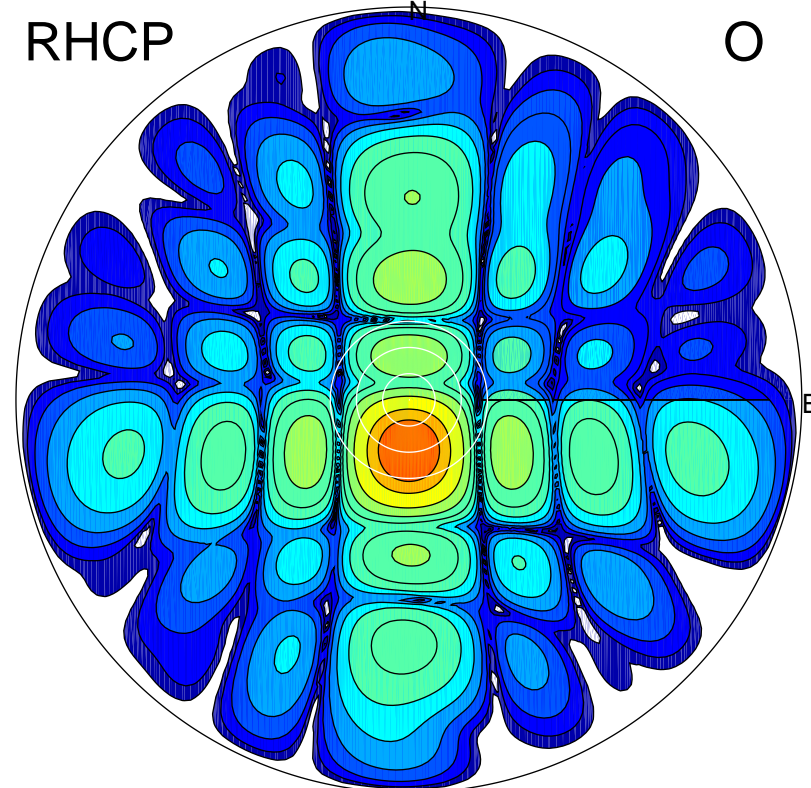
LHCP

X



RHCP

O



ERP 3.2 MW

Peak gain 6.1 dBi at Az 359 Zen 12
RHCP gain 8.3 dBi
N-S peak 6.1 dBi at Zen 11.6
N-S -3 dB beamwidth 13.9 deg.

ERP 126.3 MW

Peak gain 22.1 dBi at Az 181 Zen 11
LHCP gain 3.1 dBi
N-S peak 22.1 dBi at Zen -11.5
N-S -3 dB beamwidth 14.0 deg.