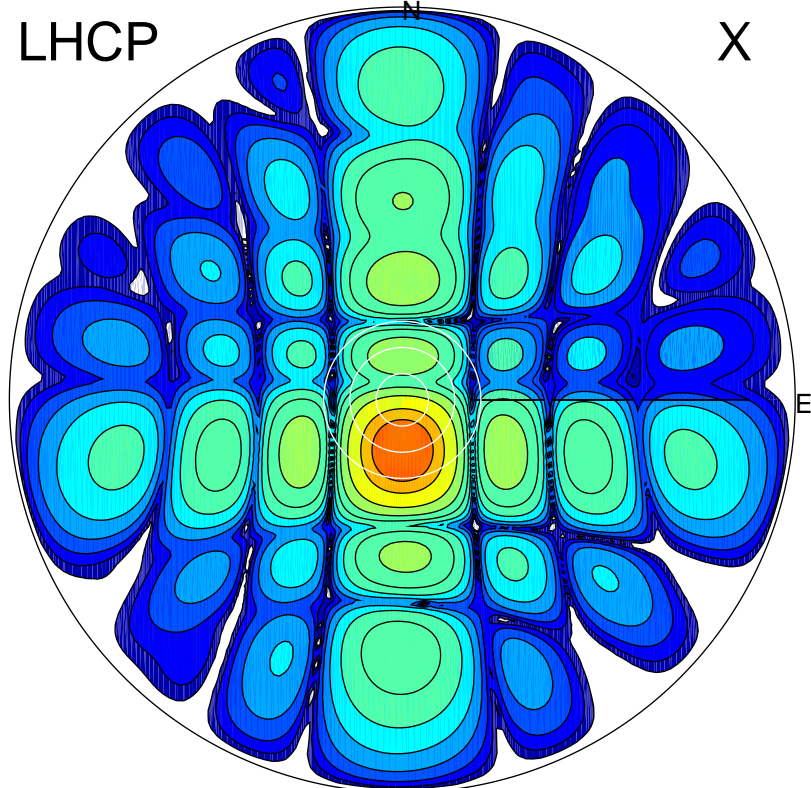


2017-02-20 17:57:05 A2 4.04000000 MHz 781.0 kW

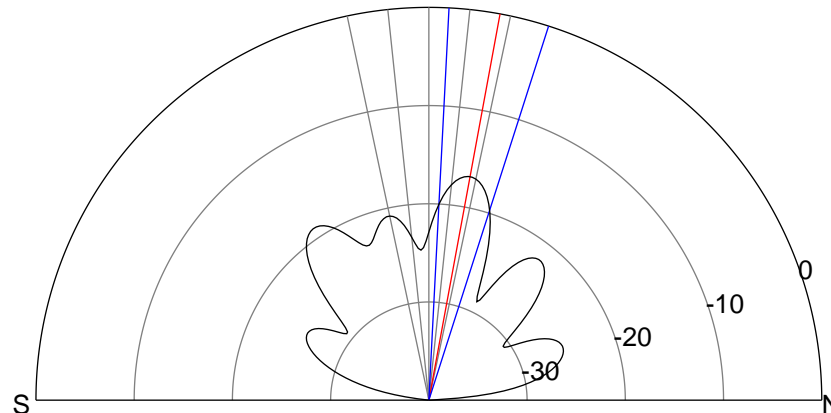
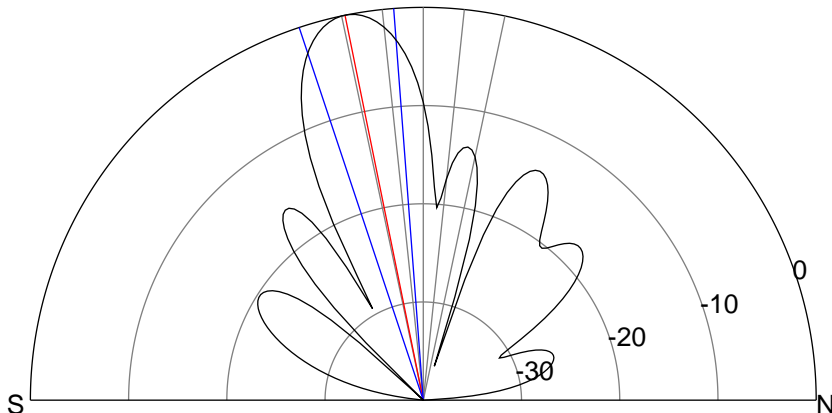
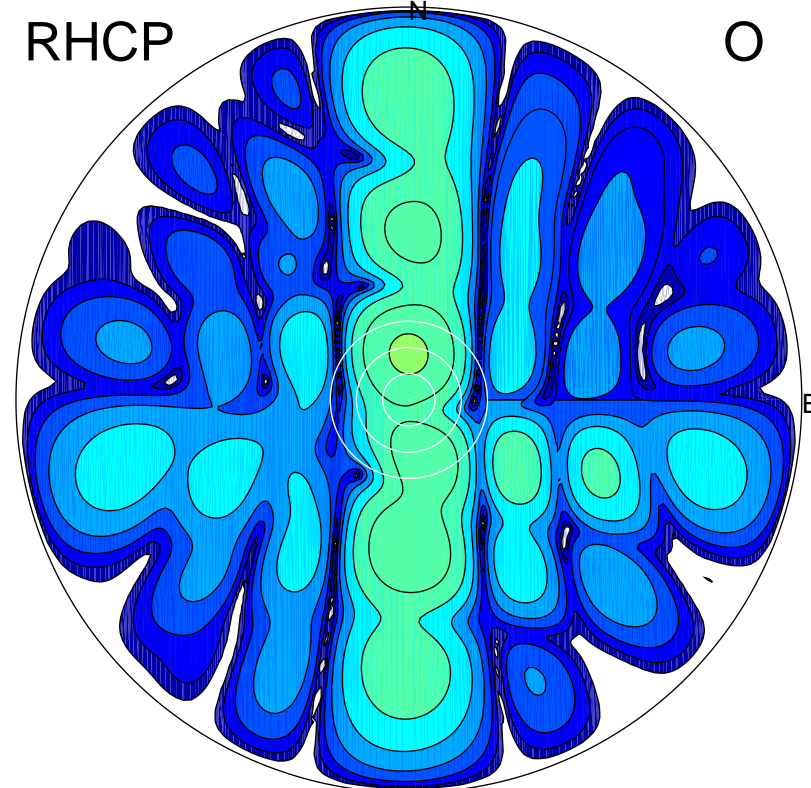
LHCP

X



RHCP

O



ERP 125.6 MW

Peak gain 22.1 dBi at Az 181 Zen 11
RHCP gain 1.0 dBi
N-S peak 22.1 dBi at Zen -11.5
N-S -3 dB beamwidth 14.1 deg.

ERP 2.6 MW

Peak gain 5.2 dBi at Az 0 Zen 10
LHCP gain 8.2 dBi
N-S peak 5.2 dBi at Zen 10.4
N-S -3 dB beamwidth 14.8 deg.