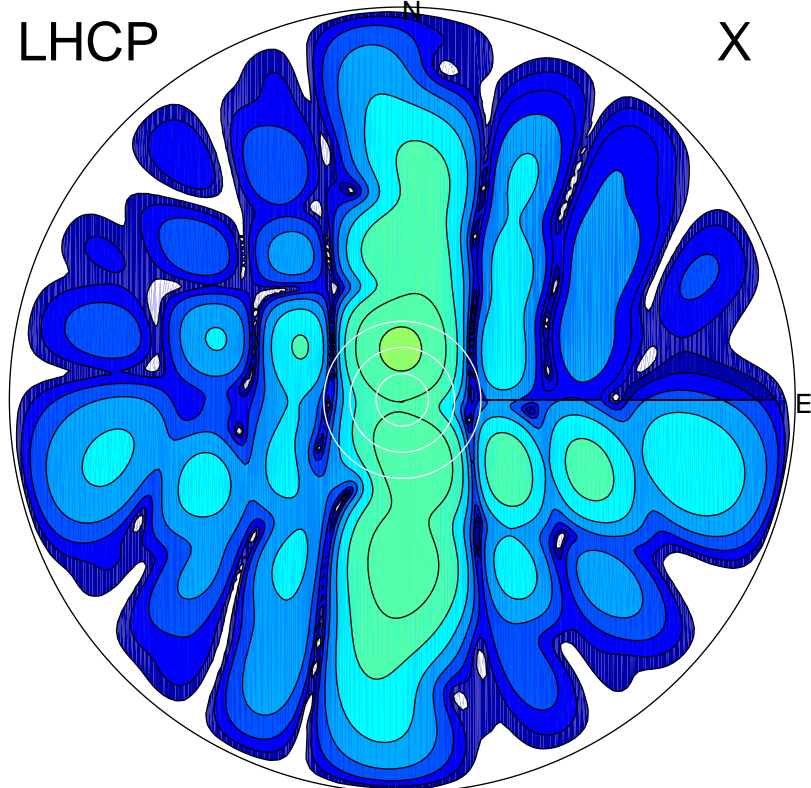


2017-02-20 16:03:30 A2 4.04000000 MHz 802.0 kW

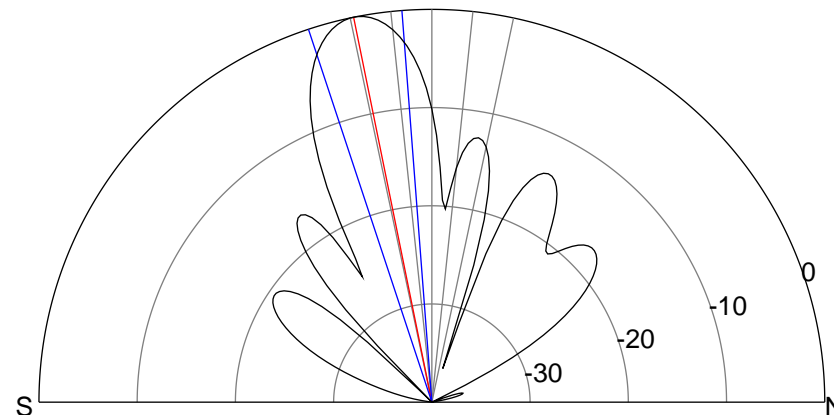
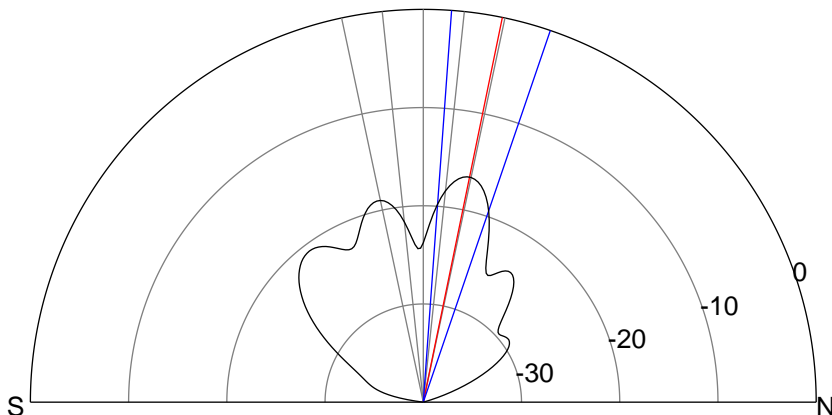
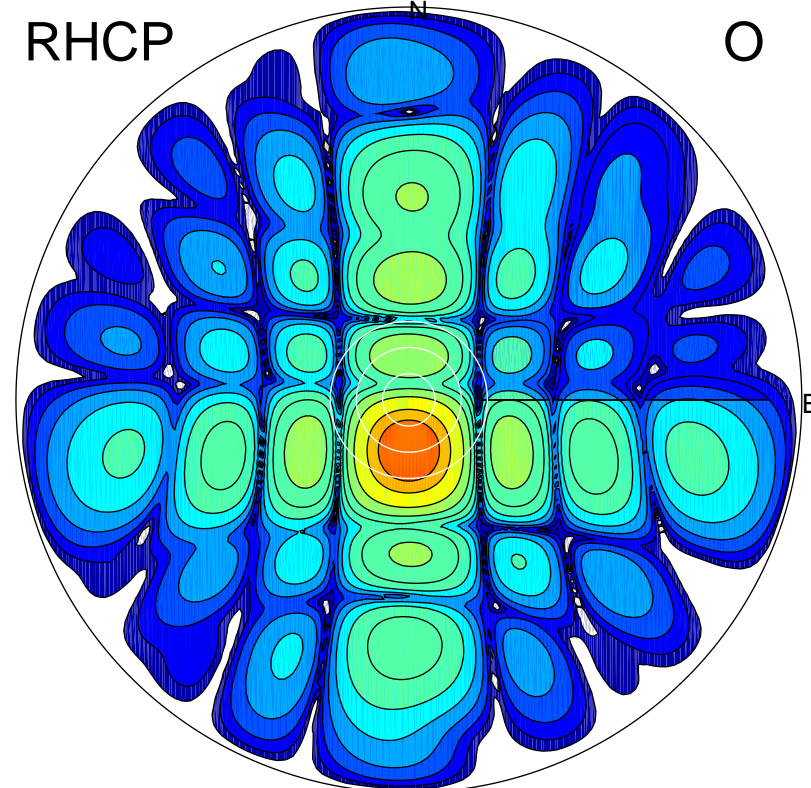
LHCP

X



RHCP

O



ERP 2.8 MW

Peak gain 5.5 dBi at Az 357 Zen 12
RHCP gain 8.7 dBi
N-S peak 5.5 dBi at Zen 11.6
N-S -3 dB beamwidth 14.7 deg.

ERP 130.2 MW

Peak gain 22.1 dBi at Az 180 Zen 11
LHCP gain 3.0 dBi
N-S peak 22.1 dBi at Zen -11.5
N-S -3 dB beamwidth 13.9 deg.