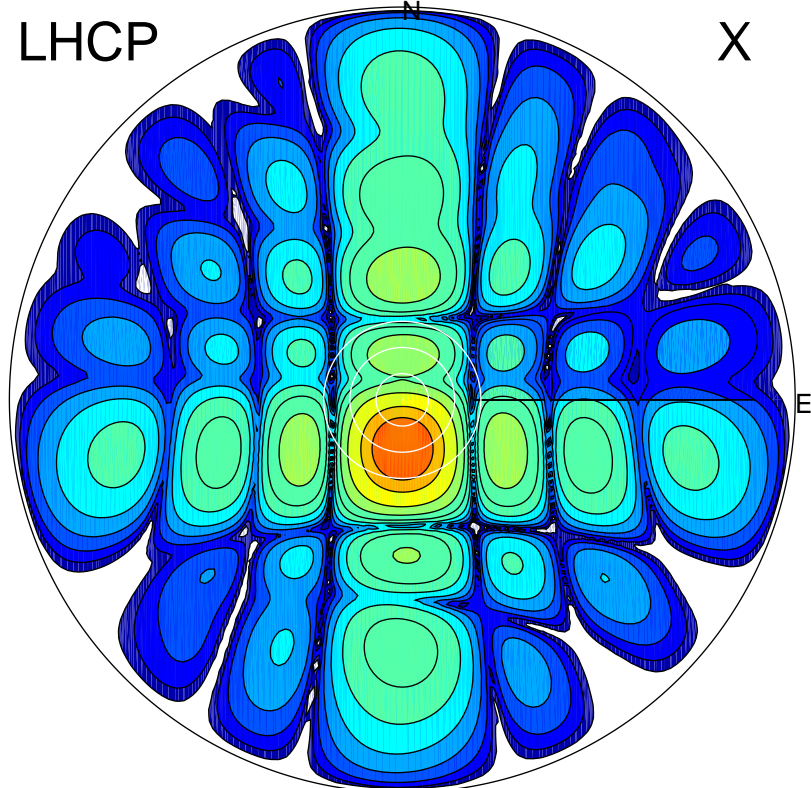


2017-02-19 15:00:32 A2 4.04000000 MHz 776.0 kW

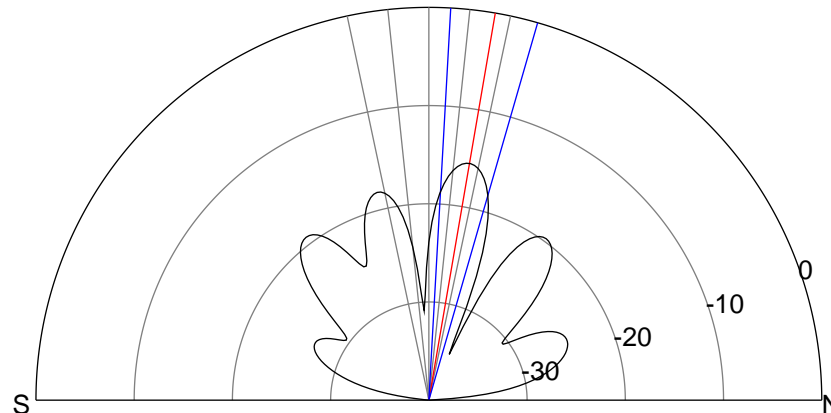
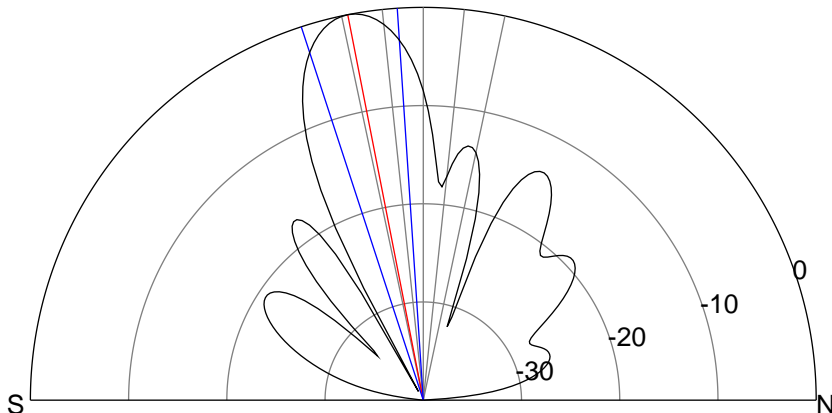
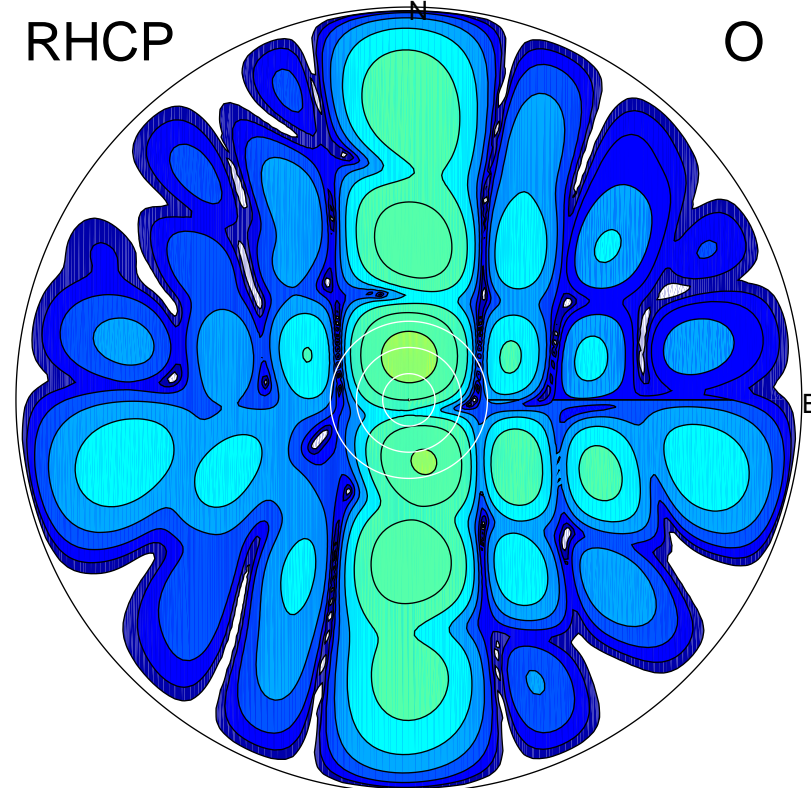
LHCP

X



RHCP

O



### ERP 123.1 MW

Peak gain 22.0 dBi at Az 181 Zen 11  
RHCP gain 3.1 dBi  
N-S peak 22.0 dBi at Zen -11.1  
N-S -3 dB beamwidth 14.3 deg.

### ERP 3.4 MW

Peak gain 6.5 dBi at Az 0 Zen 10  
LHCP gain 8.3 dBi  
N-S peak 6.5 dBi at Zen 9.7  
N-S -3 dB beamwidth 12.9 deg.