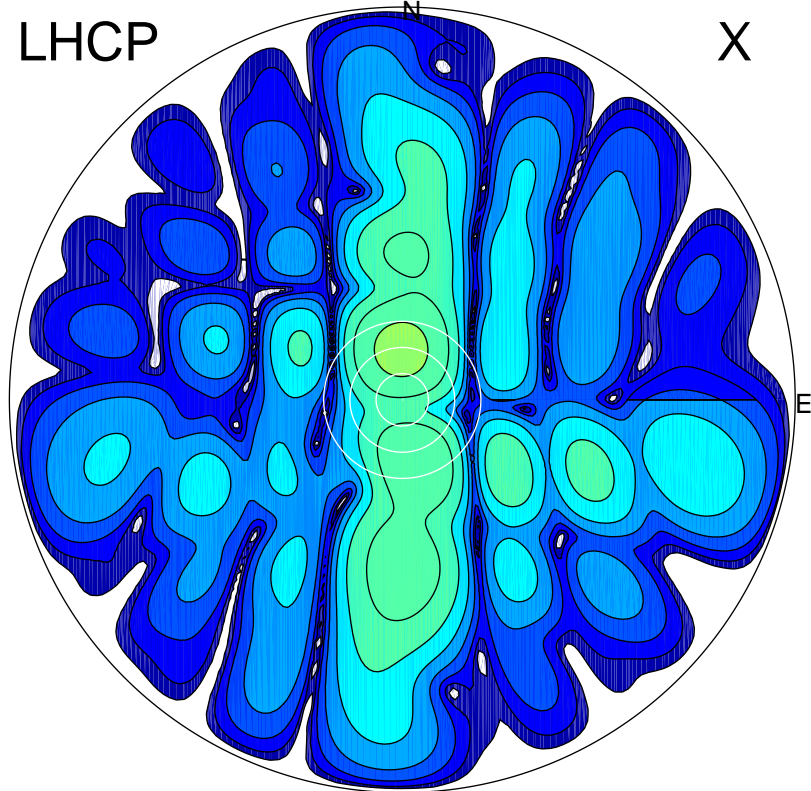


2017-02-19 14:12:32 A2 4.04000000 MHz 778.0 kW

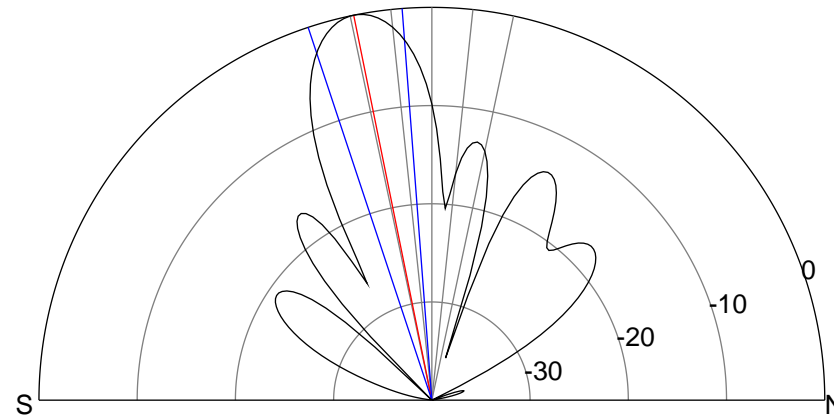
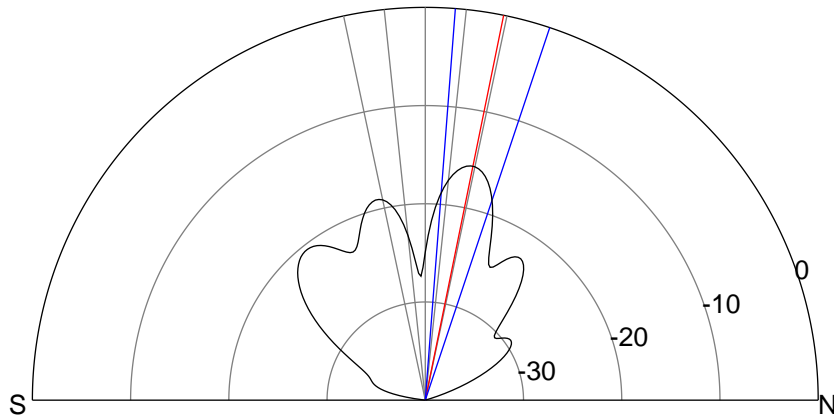
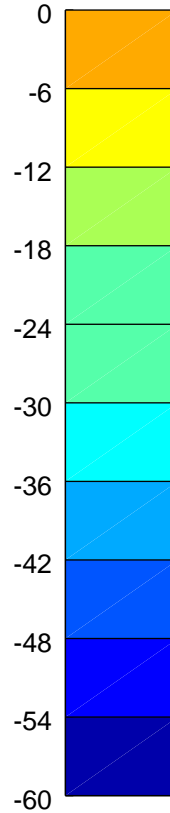
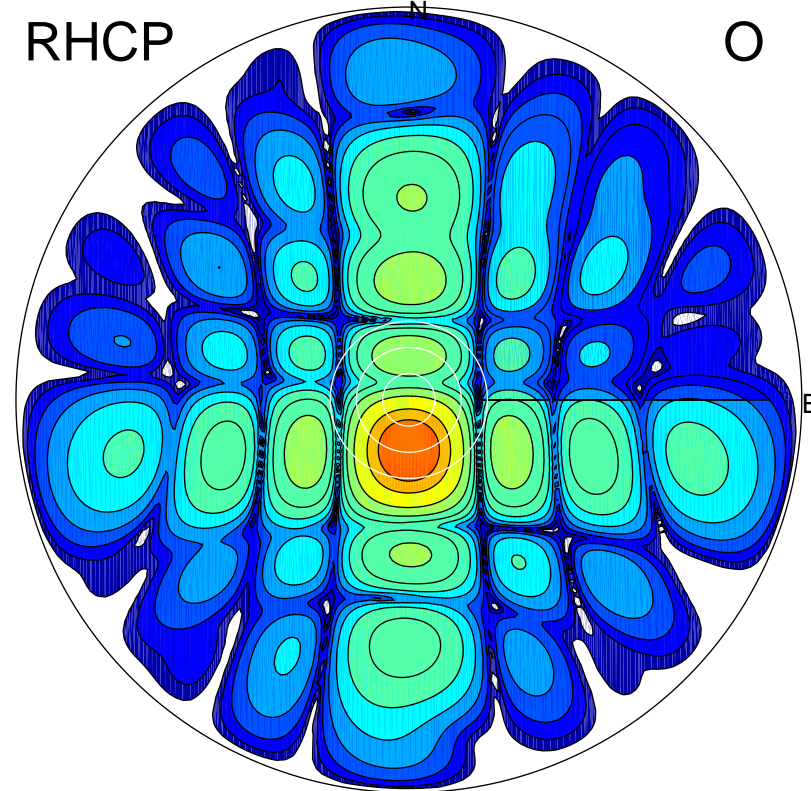
LHCP

X



RHCP

O



ERP 3.4 MW

Peak gain 6.4 dBi at Az 358 Zen 11
RHCP gain 8.6 dBi
N-S peak 6.4 dBi at Zen 11.5
N-S -3 dB beamwidth 14.1 deg.

ERP 125.8 MW

Peak gain 22.1 dBi at Az 180 Zen 11
LHCP gain 2.7 dBi
N-S peak 22.1 dBi at Zen -11.5
N-S -3 dB beamwidth 14.0 deg.