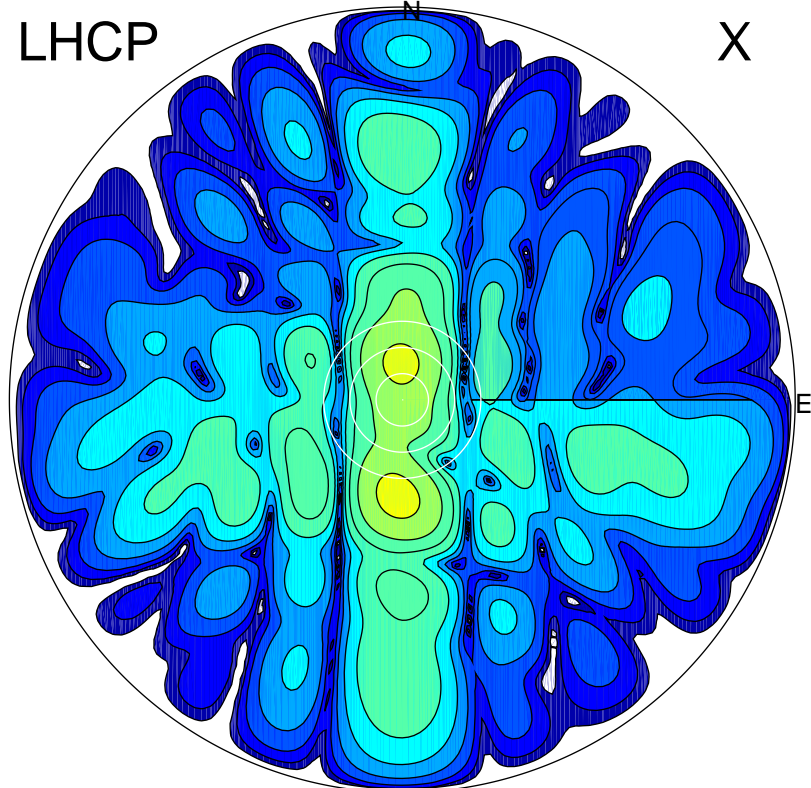


2017-02-19 14:02:32 A2 4.54400000 MHz 834.0 kW

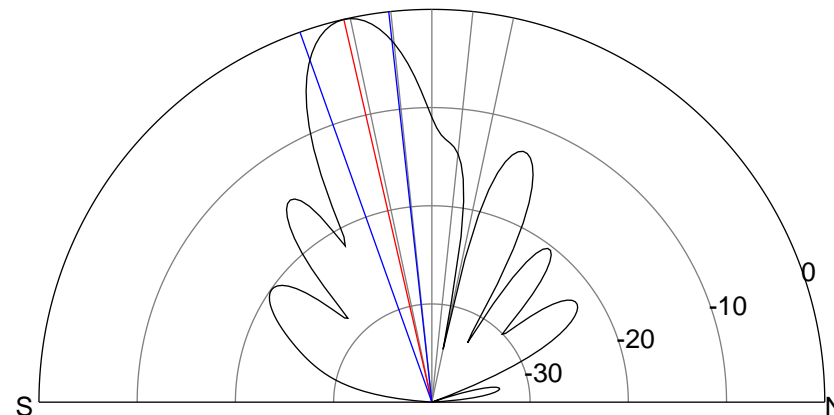
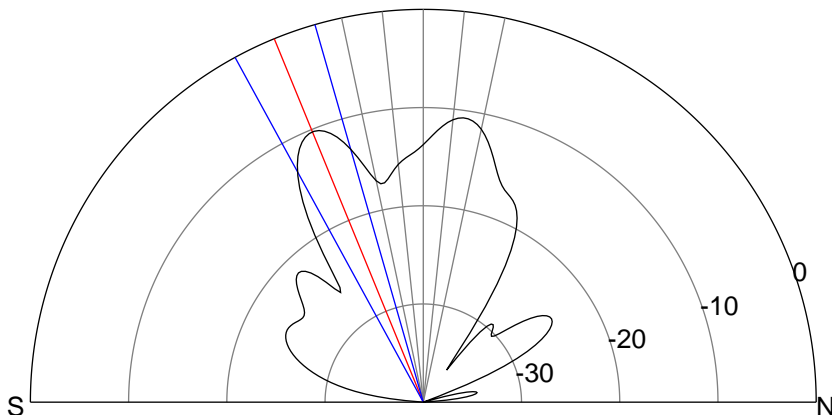
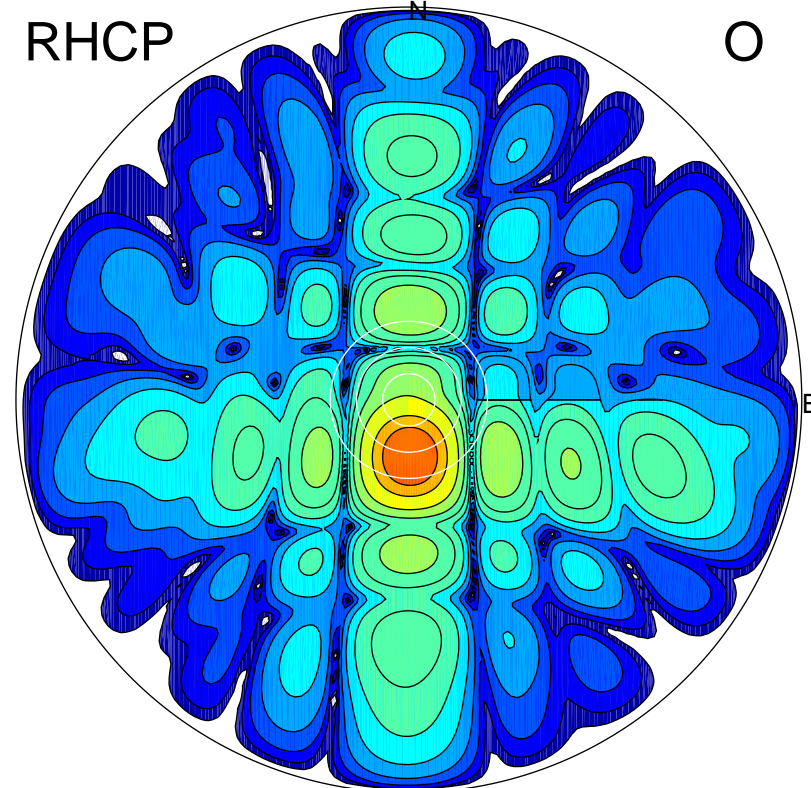
LHCP

X



RHCP

O



ERP 12.9 MW

Peak gain 11.9 dBi at Az 183 Zen 22
RHCP gain 16.2 dBi
N-S peak 11.8 dBi at Zen -22.3
N-S -3 dB beamwidth 12.6 deg.

ERP 134.4 MW

Peak gain 22.1 dBi at Az 178 Zen 13
LHCP gain 5.6 dBi
N-S peak 22.1 dBi at Zen -12.9
N-S -3 dB beamwidth 13.3 deg.