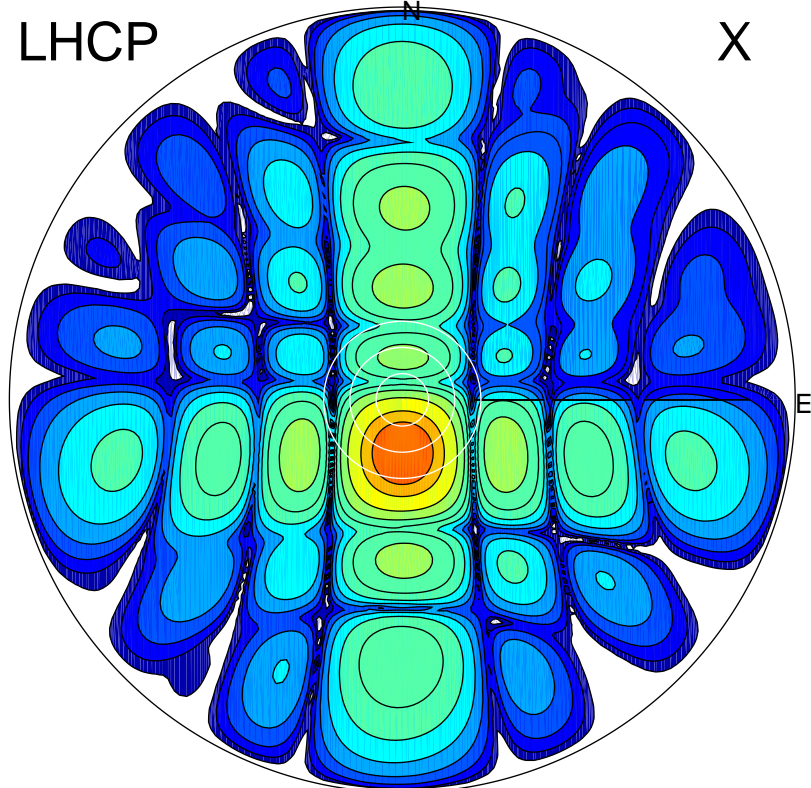


2017-02-18 14:16:32 A2 4.04000000 MHz 777.0 kW

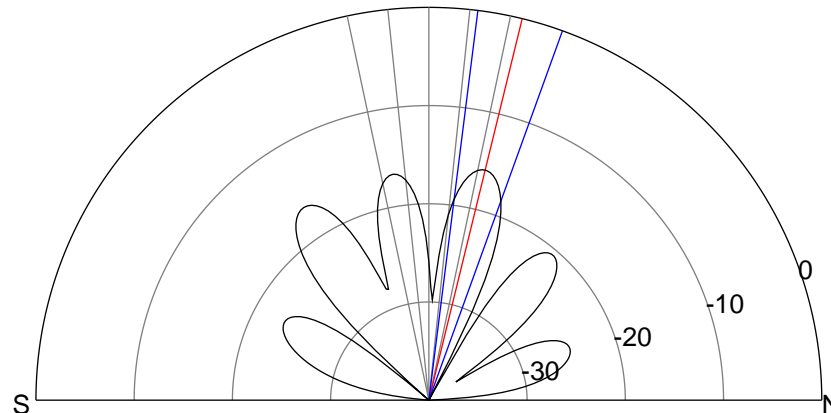
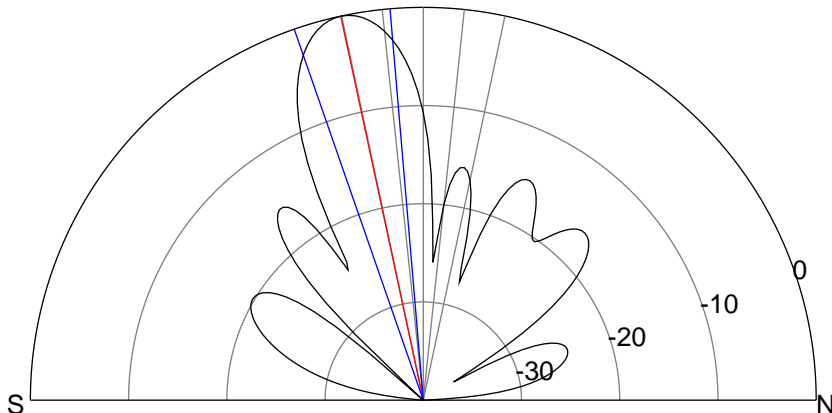
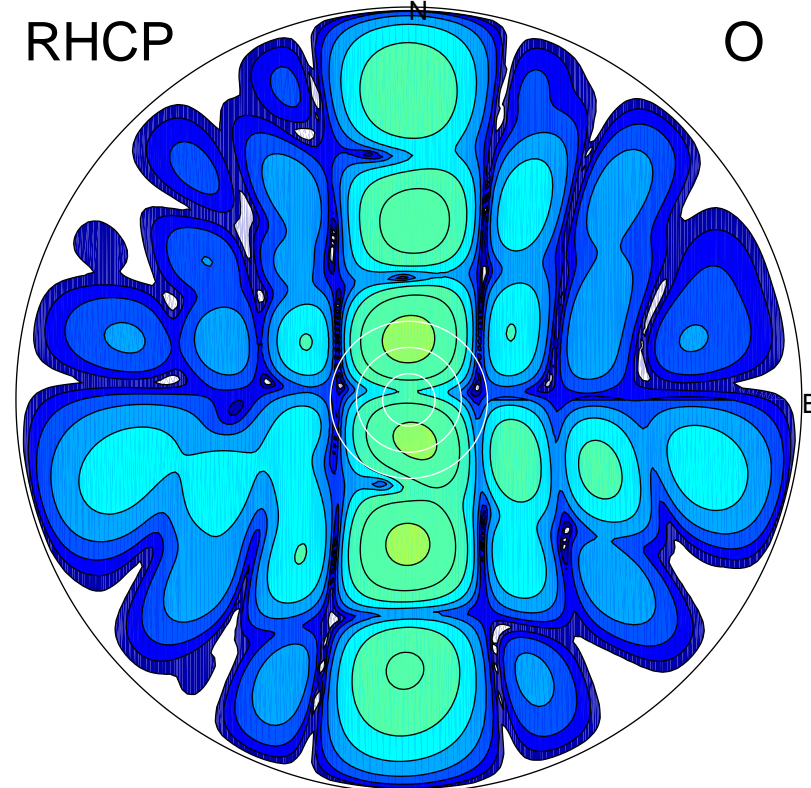
LHCP

X



RHCP

O



**ERP 122.6 MW**

Peak gain 22.0 dBi at Az 179 Zen 12

RHCP gain 4.6 dBi

N-S peak 22.0 dBi at Zen -12.1

N-S -3 dB beamwidth 14.3 deg.

**ERP 3.2 MW**

Peak gain 6.1 dBi at Az 359 Zen 14

LHCP gain 1.7 dBi

N-S peak 6.1 dBi at Zen 13.7

N-S -3 dB beamwidth 12.7 deg.