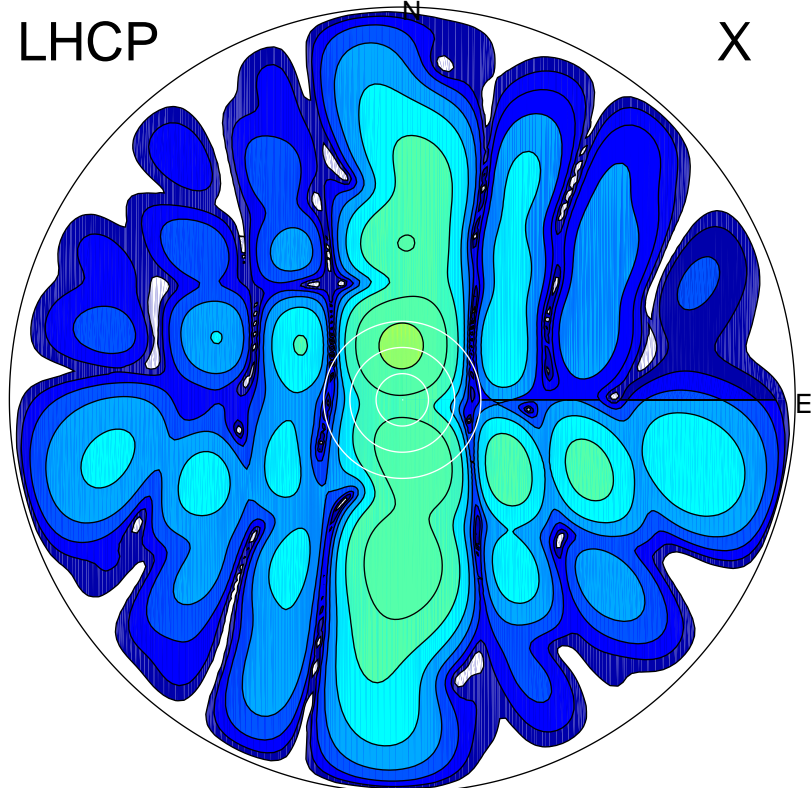


2017-02-18 14:00:32 A2 4.04000000 MHz 764.0 kW

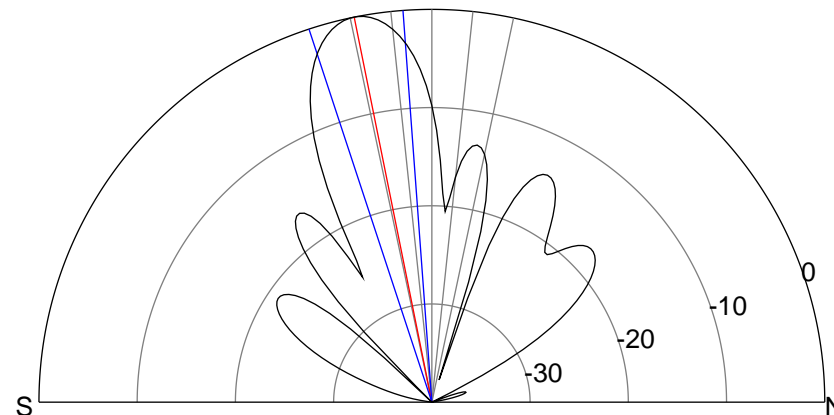
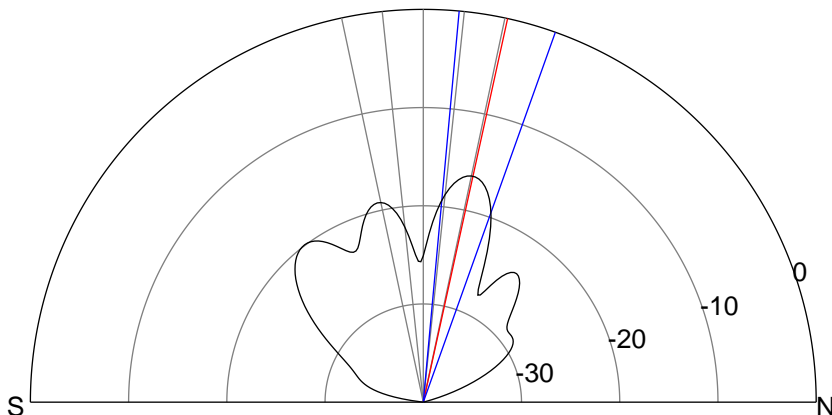
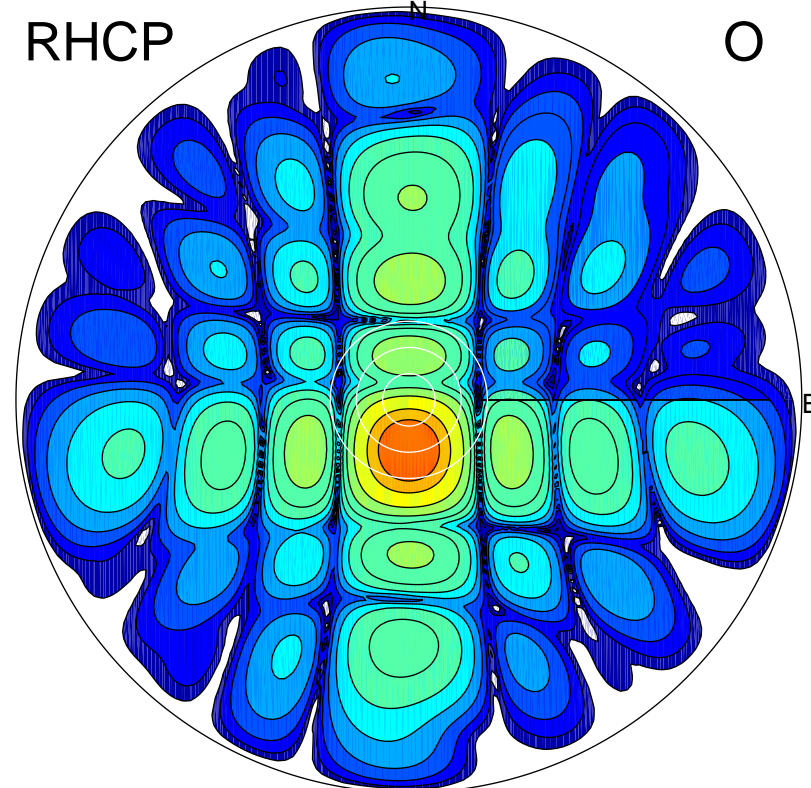
LHCP

X



RHCP

O



ERP 2.8 MW

Peak gain 5.7 dBi at Az 358 Zen 12
RHCP gain 7.9 dBi
N-S peak 5.7 dBi at Zen 12.4
N-S -3 dB beamwidth 14.4 deg.

ERP 124.1 MW

Peak gain 22.1 dBi at Az 180 Zen 11
LHCP gain 2.7 dBi
N-S peak 22.1 dBi at Zen -11.4
N-S -3 dB beamwidth 14.0 deg.