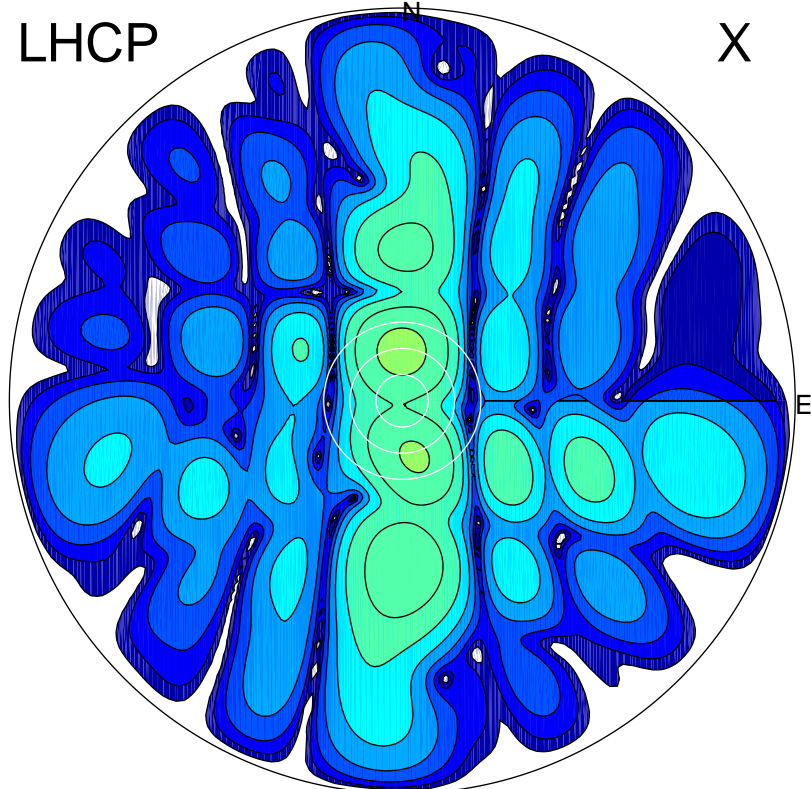


2017-02-17 14:00:32 A2 4.04000000 MHz 761.0 kW

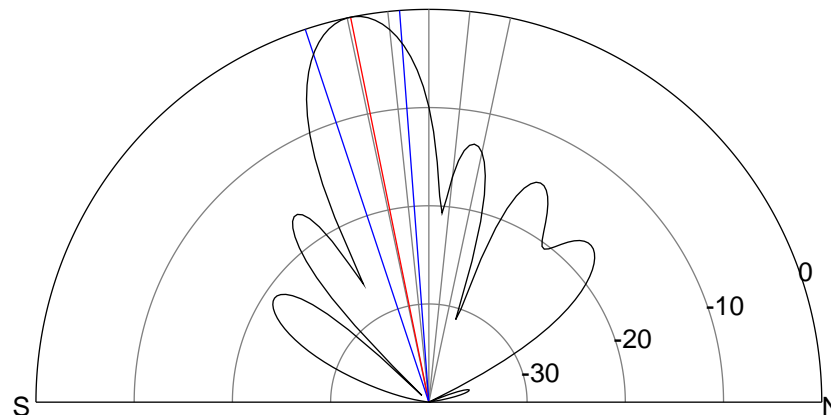
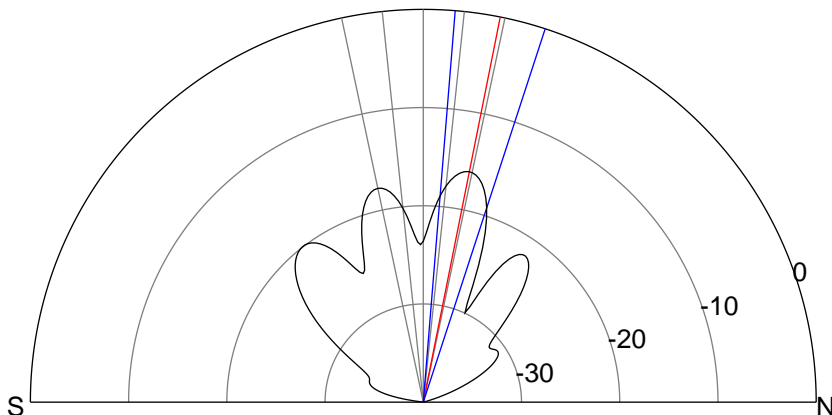
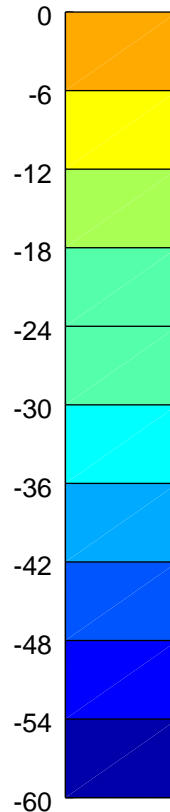
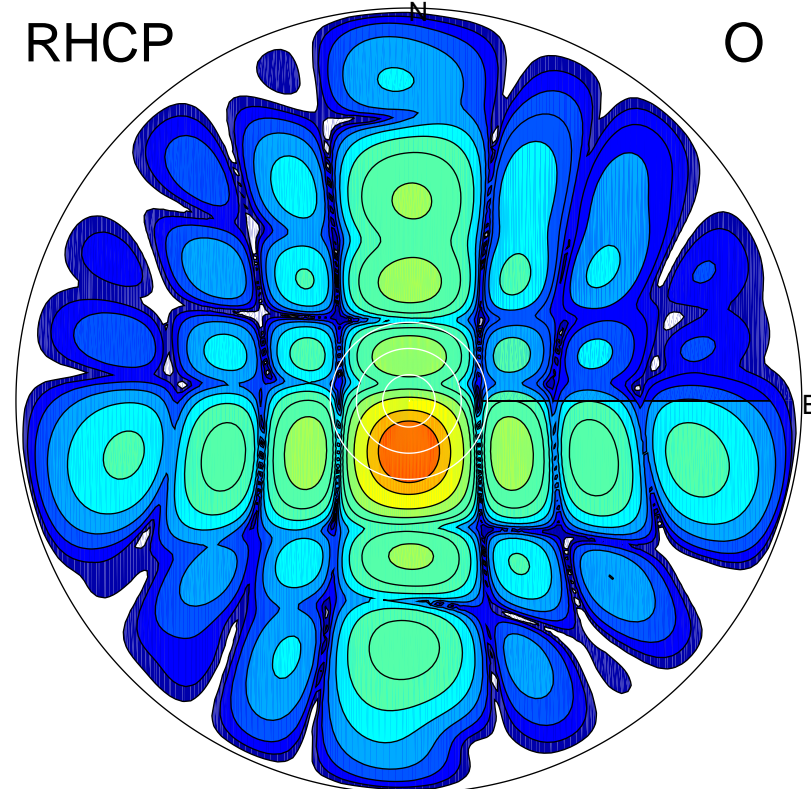
LHCP

X



RHCP

O



ERP 3.0 MW

Peak gain 6.0 dBi at Az 0 Zen 11
RHCP gain 8.6 dBi
N-S peak 6.0 dBi at Zen 11.3
N-S -3 dB beamwidth 13.4 deg.

ERP 123.1 MW

Peak gain 22.1 dBi at Az 181 Zen 12
LHCP gain 4.3 dBi
N-S peak 22.1 dBi at Zen -11.5
N-S -3 dB beamwidth 14.1 deg.