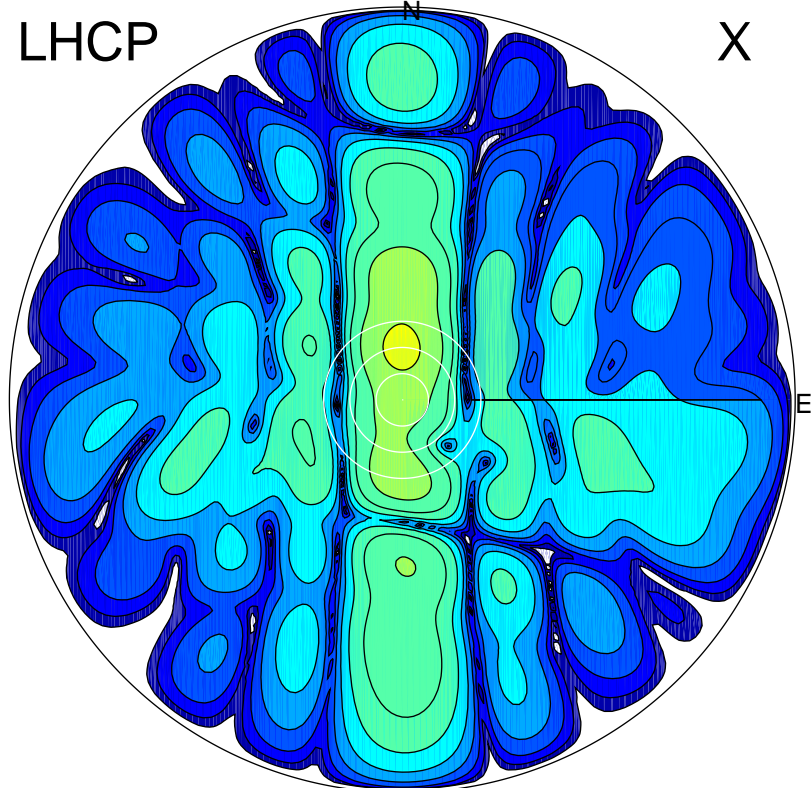


2017-02-17 13:37:02 A2 4.54400000 MHz 511.0 kW

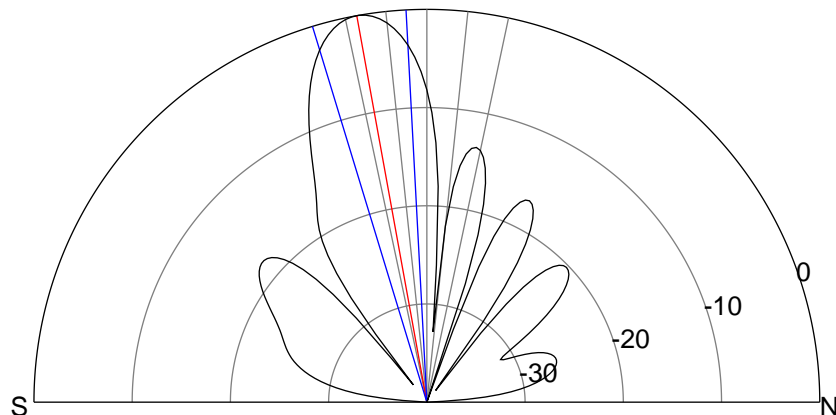
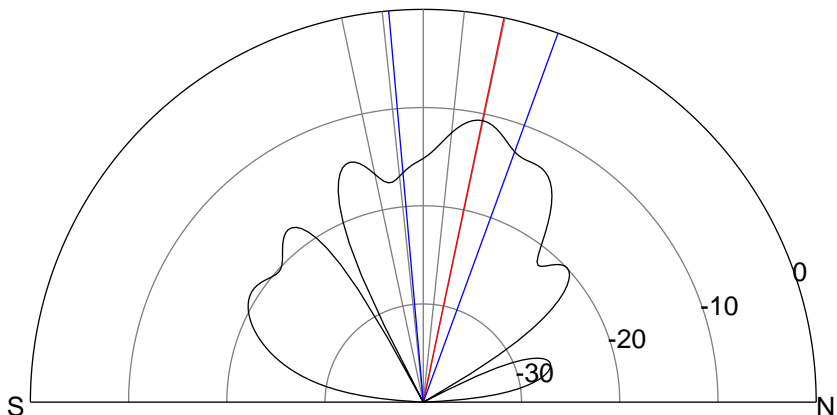
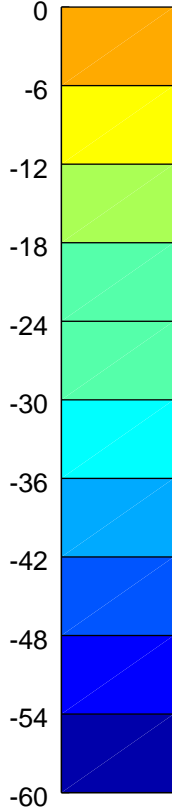
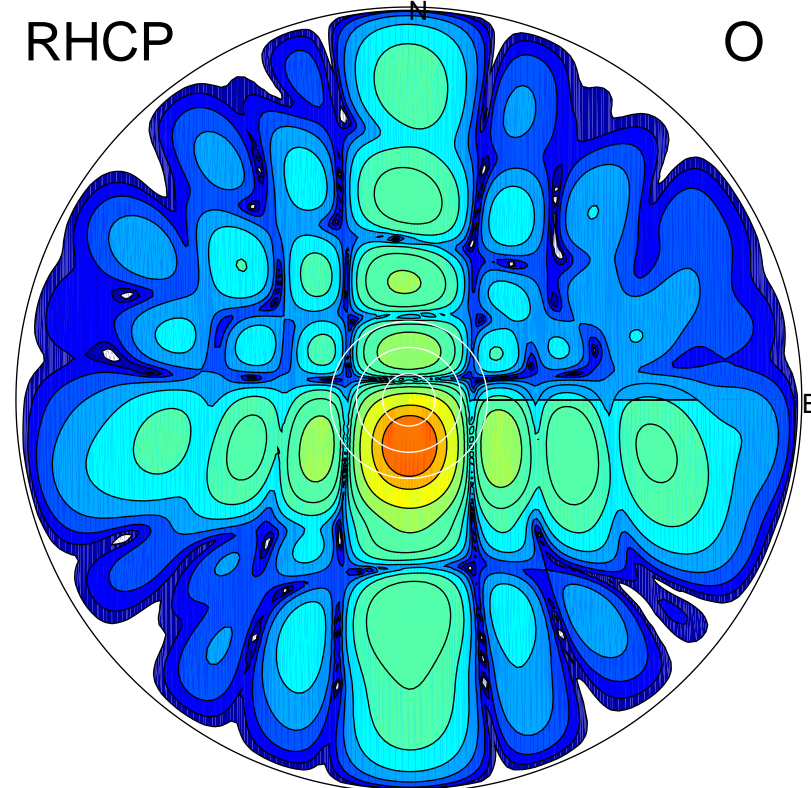
LHCP

X



RHCP

O



### ERP 6.9 MW

Peak gain 11.3 dBi at Az 359 Zen 12  
RHCP gain 8.2 dBi  
N-S peak 11.3 dBi at Zen 11.8  
N-S -3 dB beamwidth 25.1 deg.

### ERP 81.1 MW

Peak gain 22.0 dBi at Az 179 Zen 10  
LHCP gain 4.7 dBi  
N-S peak 22.0 dBi at Zen -10.3  
N-S -3 dB beamwidth 13.9 deg.