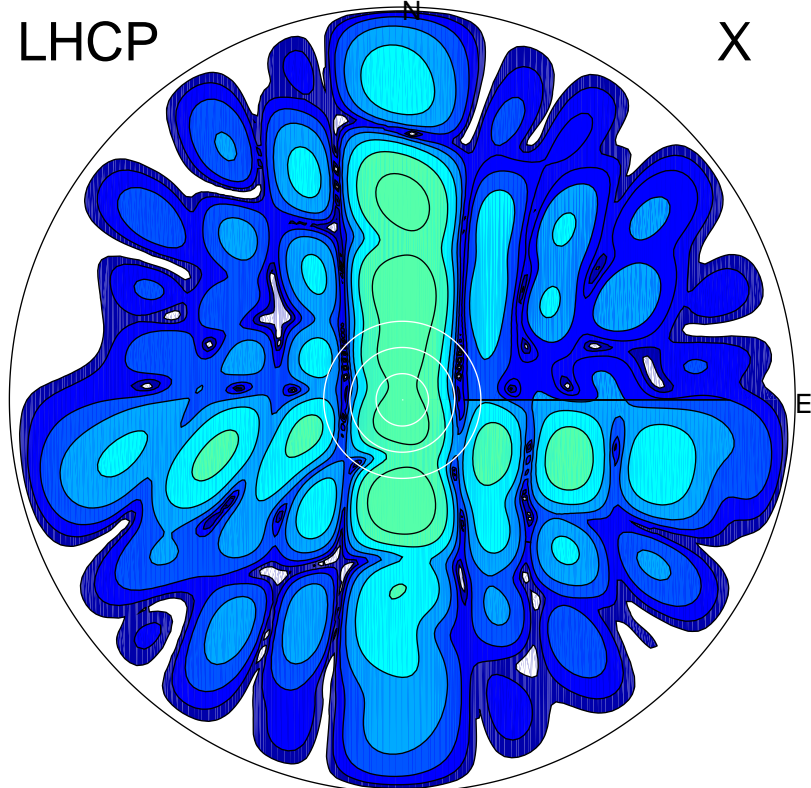


2017-02-17 13:01:02 A2 4.91280000 MHz 542.0 kW

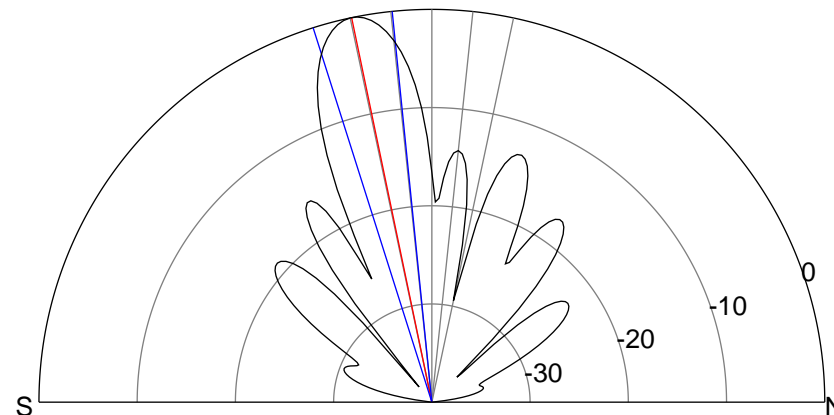
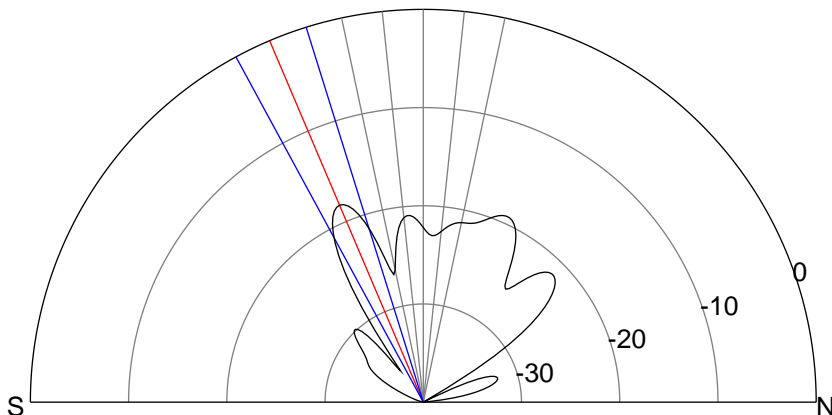
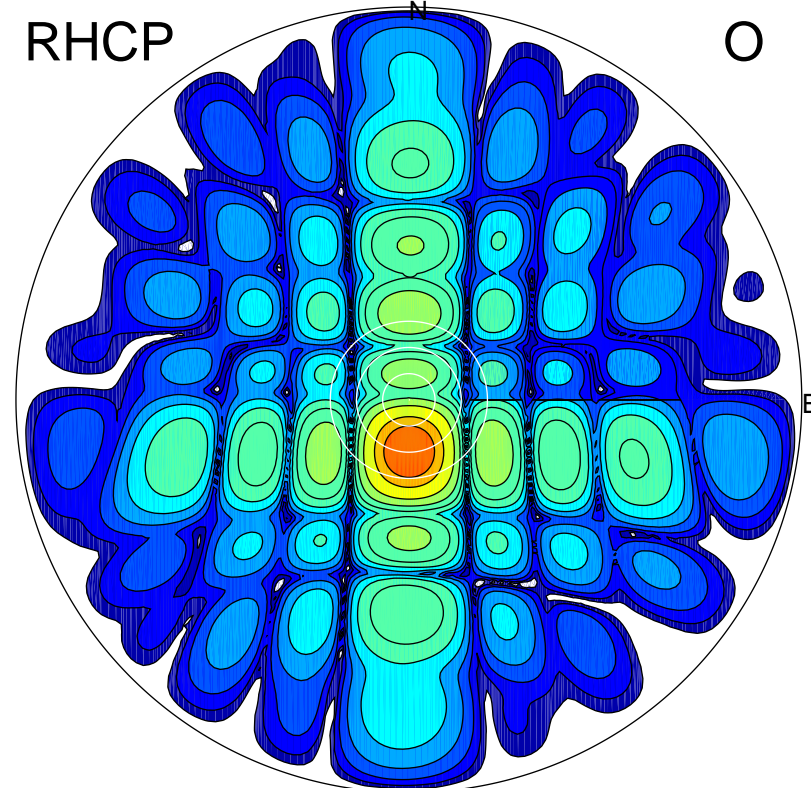
LHCP

X



RHCP

O



ERP 1.9 MW

Peak gain 5.4 dBi at Az 181 Zen 23
RHCP gain 10.9 dBi
N-S peak 5.4 dBi at Zen -23.0
N-S -3 dB beamwidth 11.1 deg.

ERP 124.4 MW

Peak gain 23.6 dBi at Az 181 Zen 12
LHCP gain -2.7 dBi
N-S peak 23.6 dBi at Zen -11.8
N-S -3 dB beamwidth 11.8 deg.