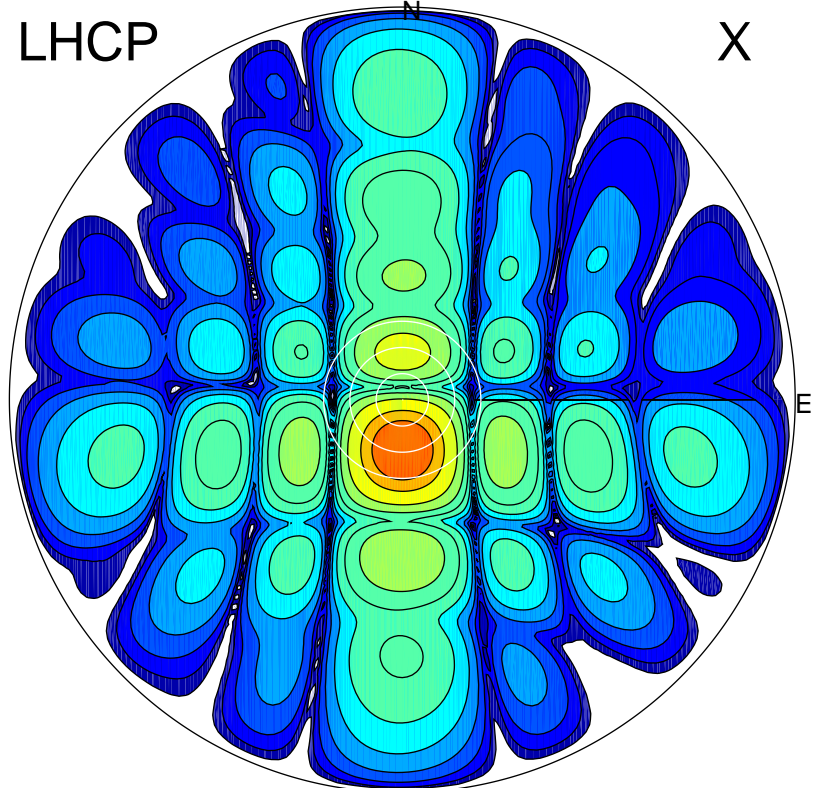


2016-12-19 13:26:55 A2 4.04000000 MHz 734.0 kW

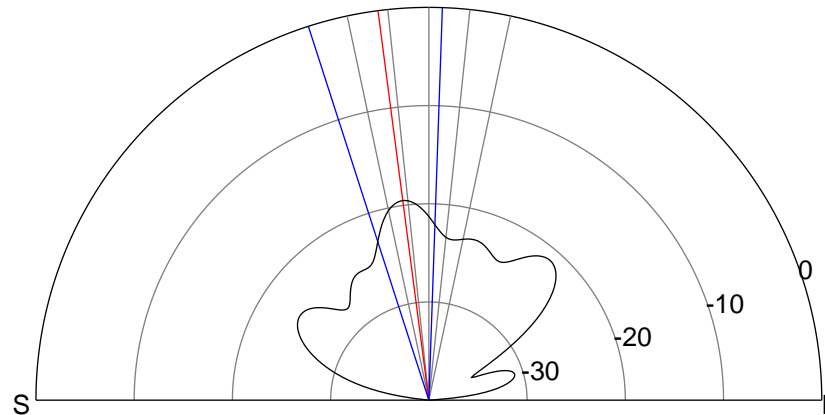
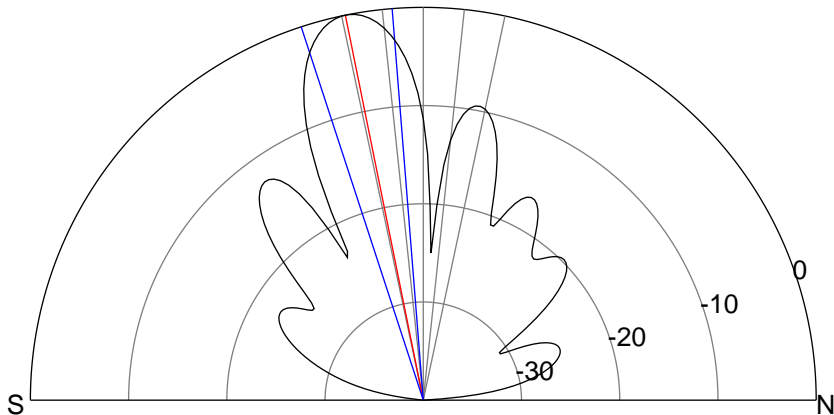
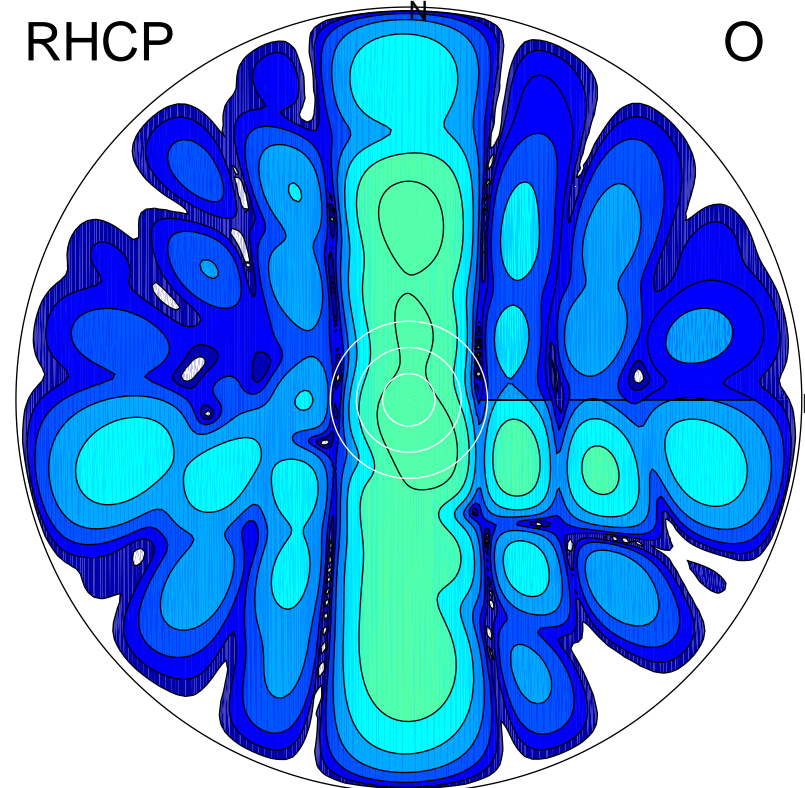
LHCP

X



RHCP

O



ERP 118.6 MW

Peak gain 22.1 dBi at Az 181 Zen 11
RHCP gain 2.0 dBi
N-S peak 22.1 dBi at Zen -11.4
N-S -3 dB beamwidth 13.6 deg.

ERP 1.5 MW

Peak gain 3.0 dBi at Az 162 Zen 10
LHCP gain 21.3 dBi
N-S peak 2.6 dBi at Zen -7.4
N-S -3 dB beamwidth 19.8 deg.