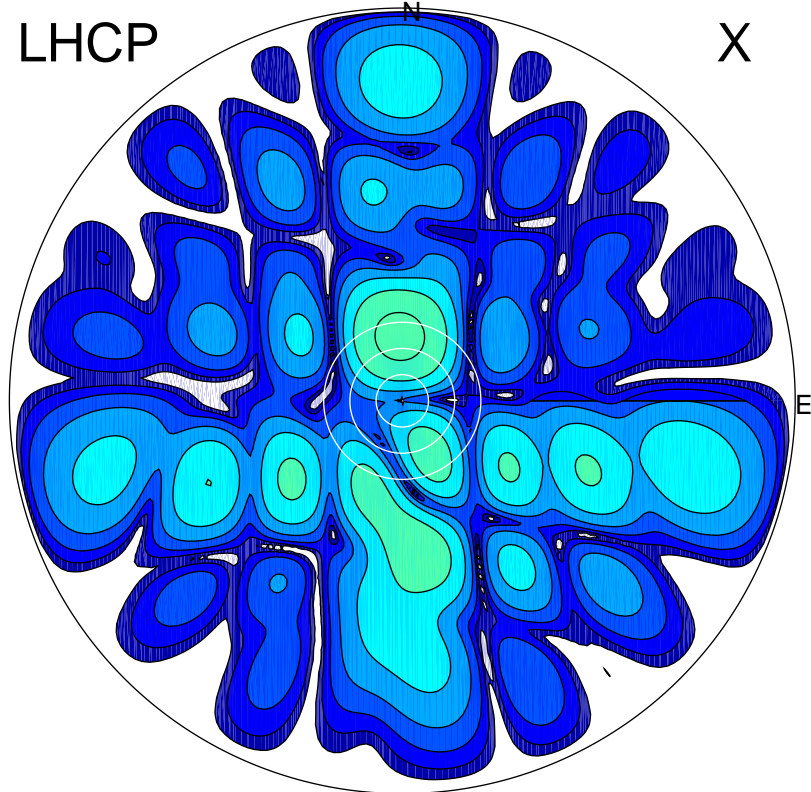


2016-12-19 11:42:55 A2 4.04000000 MHz 830.0 kW

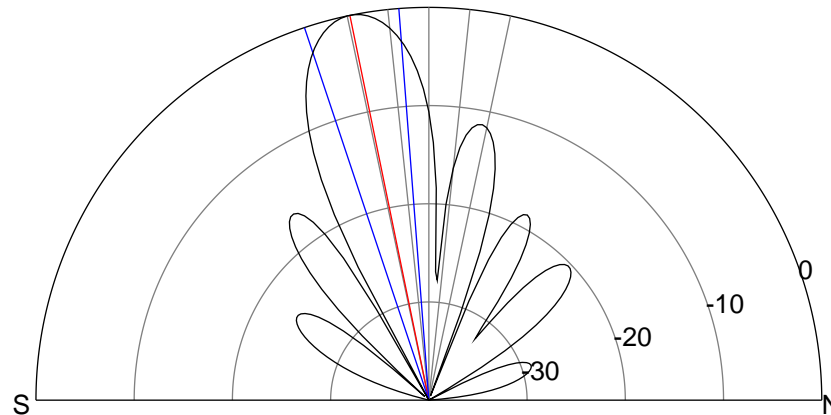
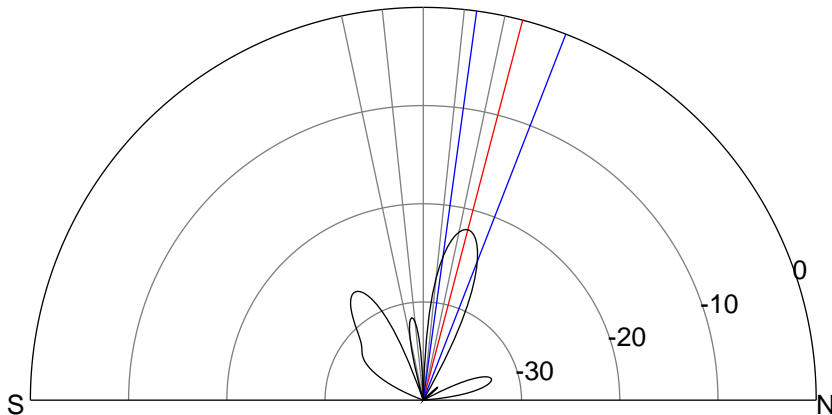
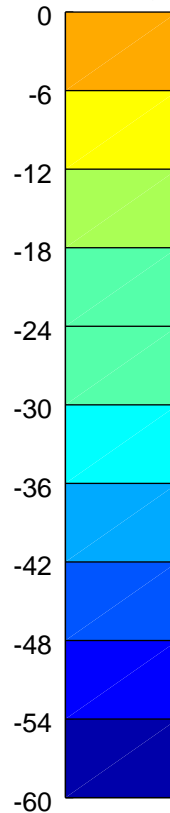
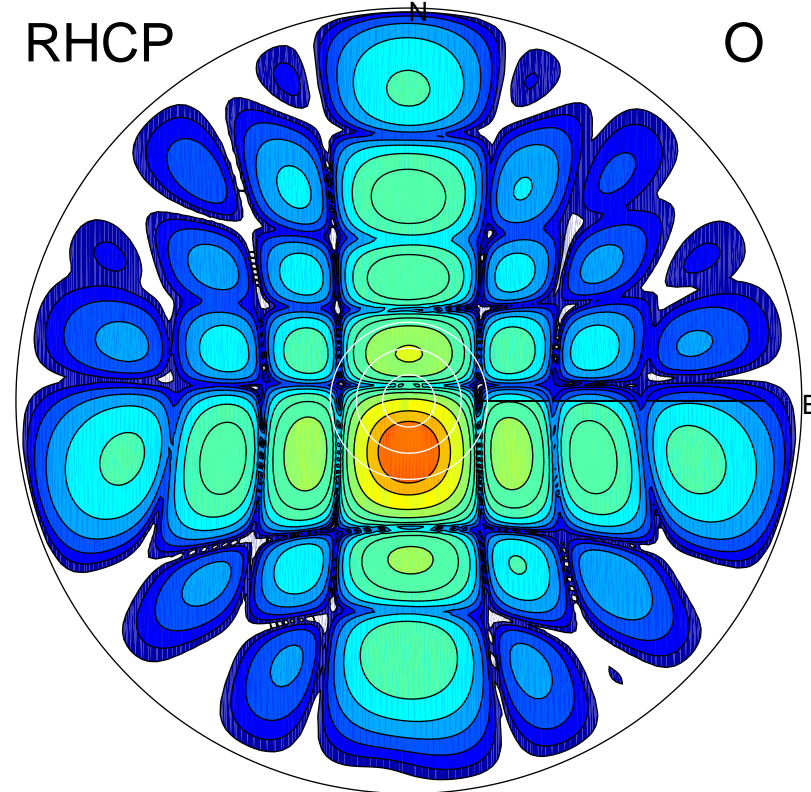
LHCP

X



RHCP

O



ERP 0.9 MW

Peak gain 0.3 dBi at Az 358 Zen 15
RHCP gain 8.3 dBi
N-S peak 0.3 dBi at Zen 14.7
N-S -3 dB beamwidth 13.5 deg.

ERP 142.8 MW

Peak gain 22.4 dBi at Az 181 Zen 12
LHCP gain -11.7 dBi
N-S peak 22.4 dBi at Zen -11.6
N-S -3 dB beamwidth 14.1 deg.