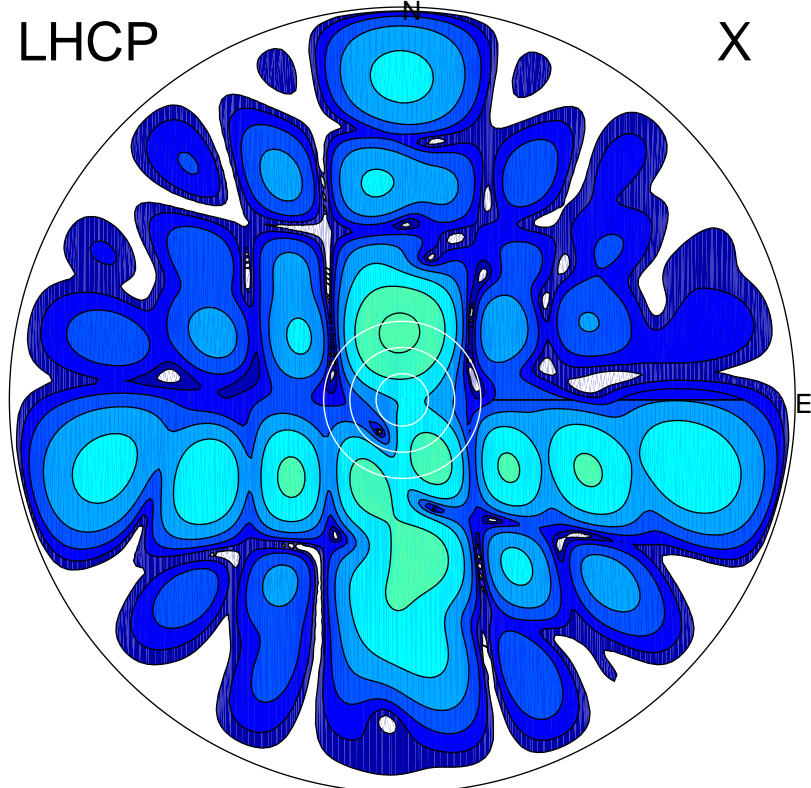


2016-12-16 11:56:05 A2 4.04000000 MHz 848.0 kW

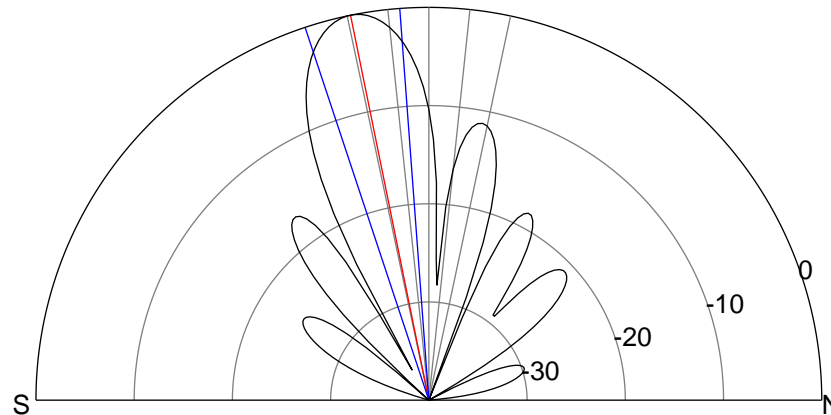
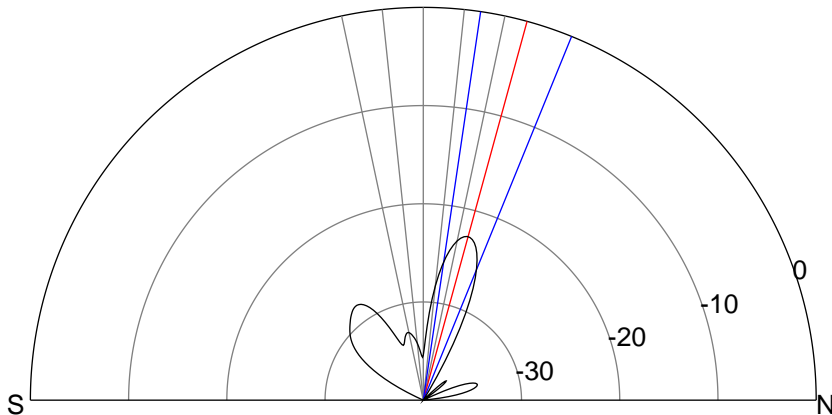
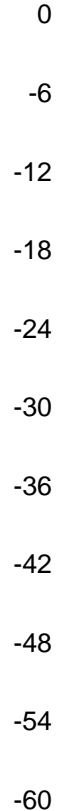
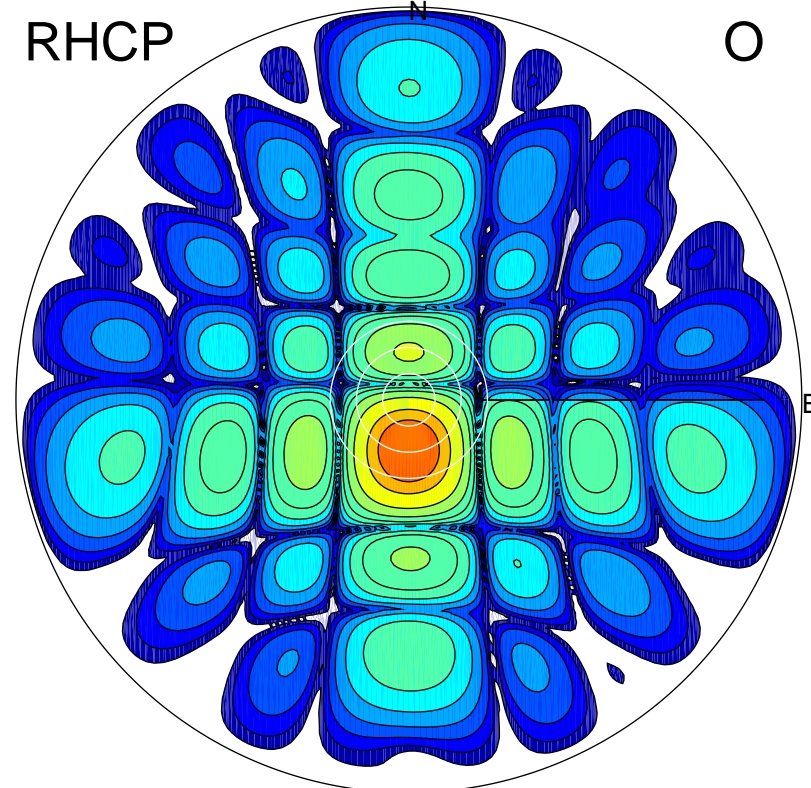
LHCP

X



RHCP

O



ERP 0.8 MW

Peak gain -0.4 dBi at Az 357 Zen 15
RHCP gain 8.6 dBi
N-S peak -0.4 dBi at Zen 15.3
N-S -3 dB beamwidth 13.8 deg.

ERP 145.5 MW

Peak gain 22.3 dBi at Az 182 Zen 12
LHCP gain -11.5 dBi
N-S peak 22.4 dBi at Zen -11.5
N-S -3 dB beamwidth 14.1 deg.