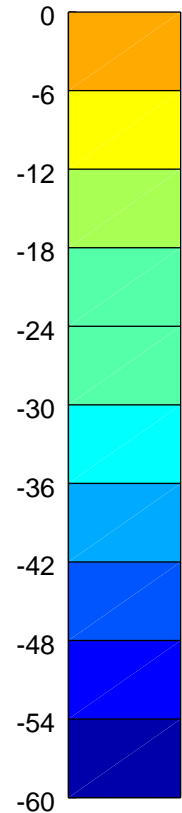
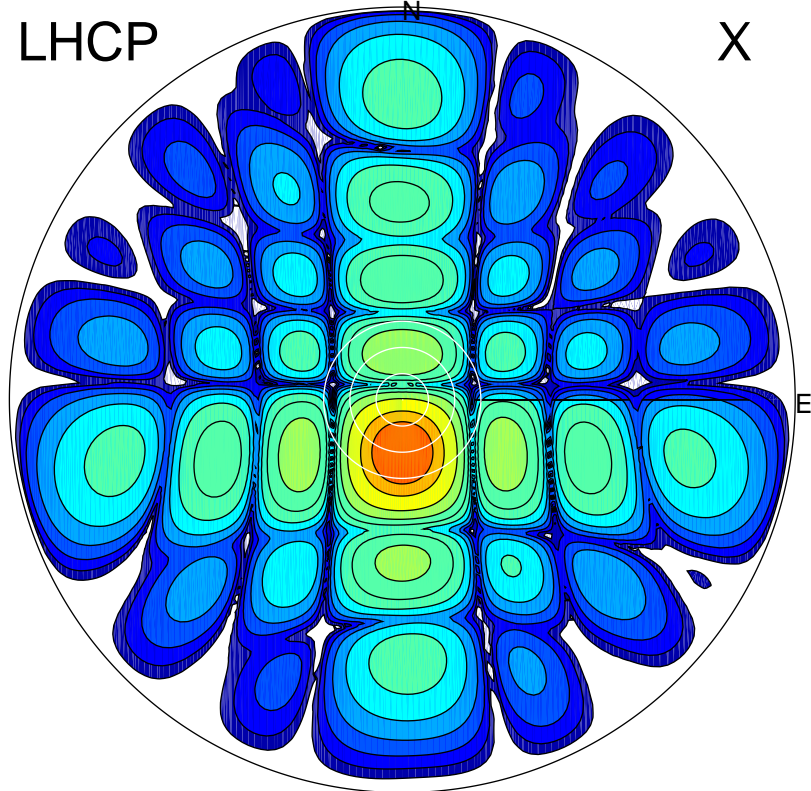


2016-12-13 12:47:00 A2 4.04000000 MHz 841.0 kW

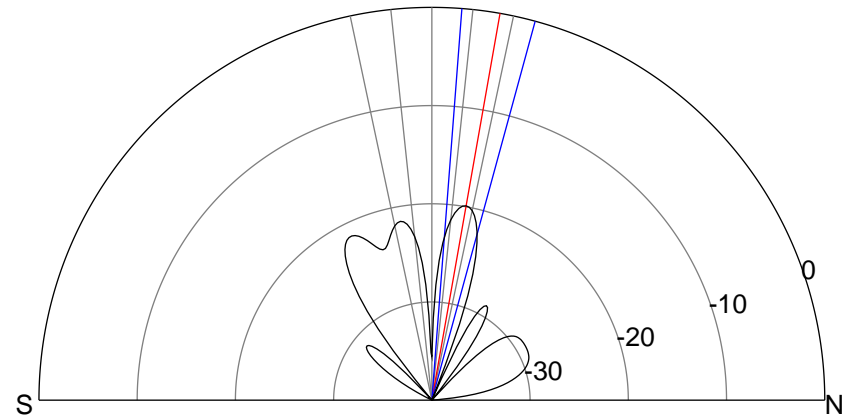
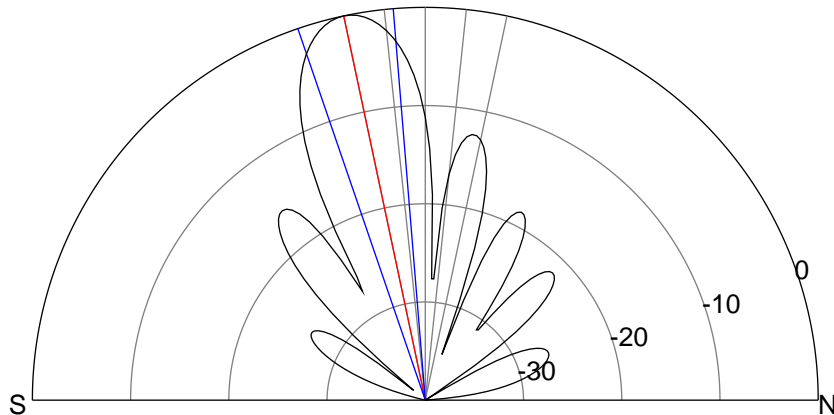
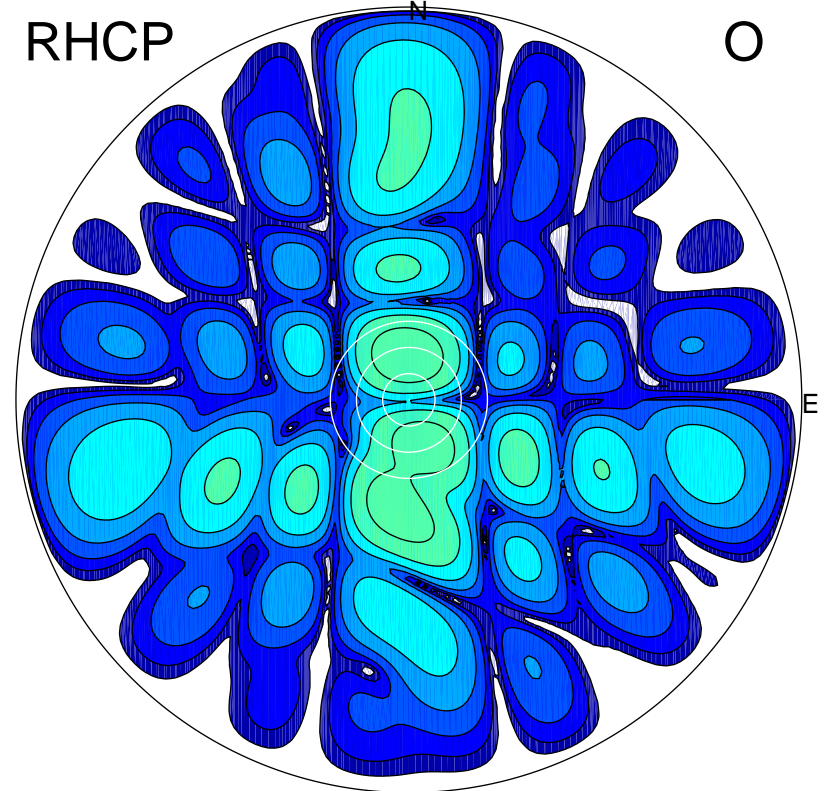
LHCP

X



RHCP

O



ERP 142.5 MW

Peak gain 22.3 dBi at Az 181 Zen 12
RHCP gain 0.4 dBi
N-S peak 22.3 dBi at Zen -12.0
N-S -3 dB beamwidth 14.2 deg.

ERP 1.5 MW

Peak gain 2.4 dBi at Az 358 Zen 10
LHCP gain 9.8 dBi
N-S peak 2.4 dBi at Zen 10.0
N-S -3 dB beamwidth 10.9 deg.