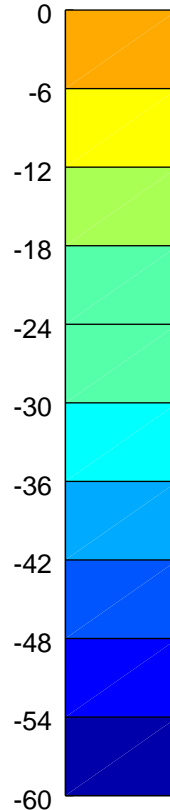
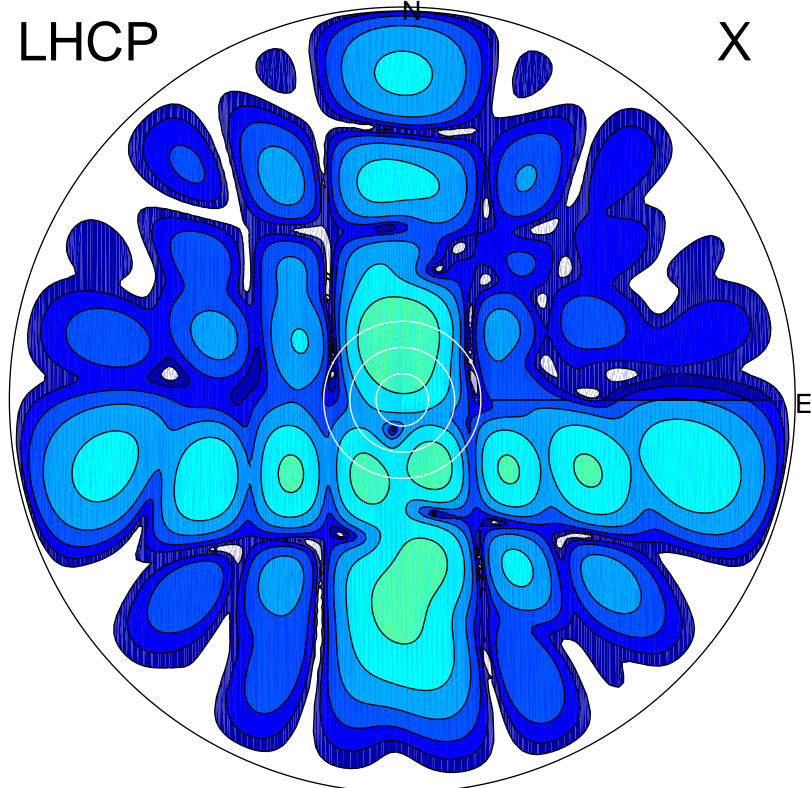


2016-12-12 13:34:02 A2 4.04000000 MHz 829.0 kW

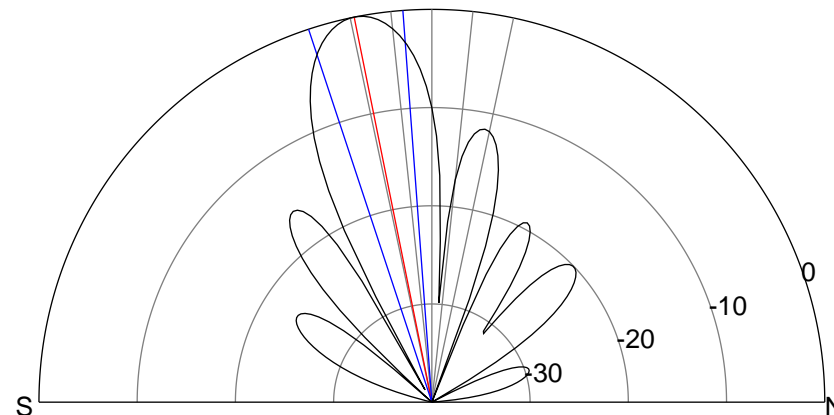
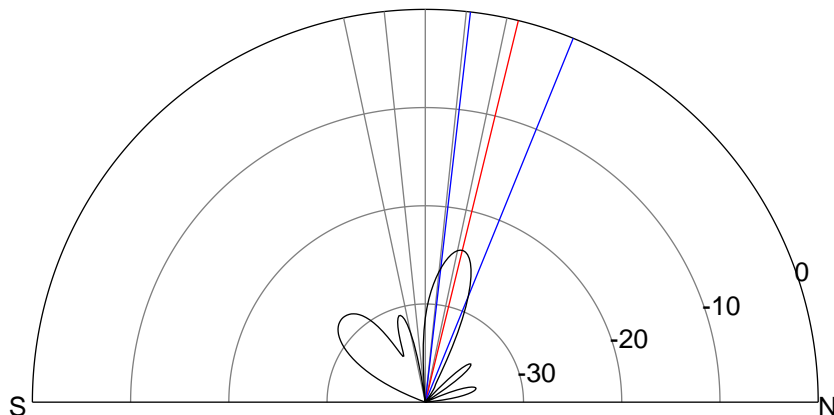
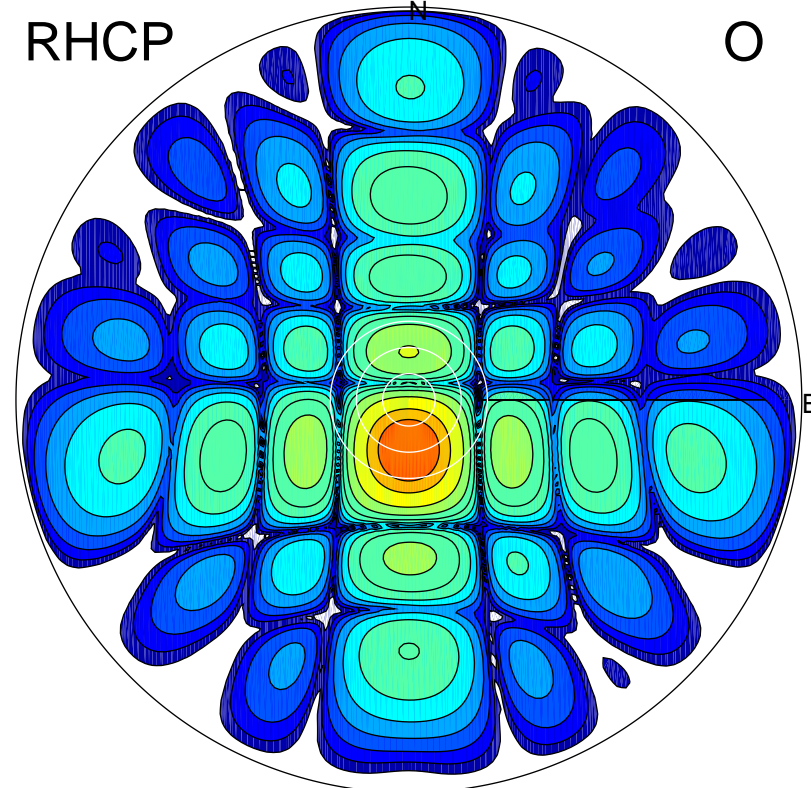
LHCP

X



RHCP

O



ERP 0.6 MW

Peak gain -1.7 dBi at Az 355 Zen 14
RHCP gain 9.3 dBi
N-S peak -1.7 dBi at Zen 13.7
N-S -3 dB beamwidth 15.5 deg.

ERP 143.0 MW

Peak gain 22.4 dBi at Az 182 Zen 11
LHCP gain -12.1 dBi
N-S peak 22.4 dBi at Zen -11.4
N-S -3 dB beamwidth 14.1 deg.