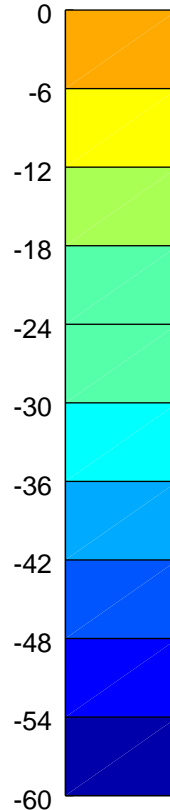
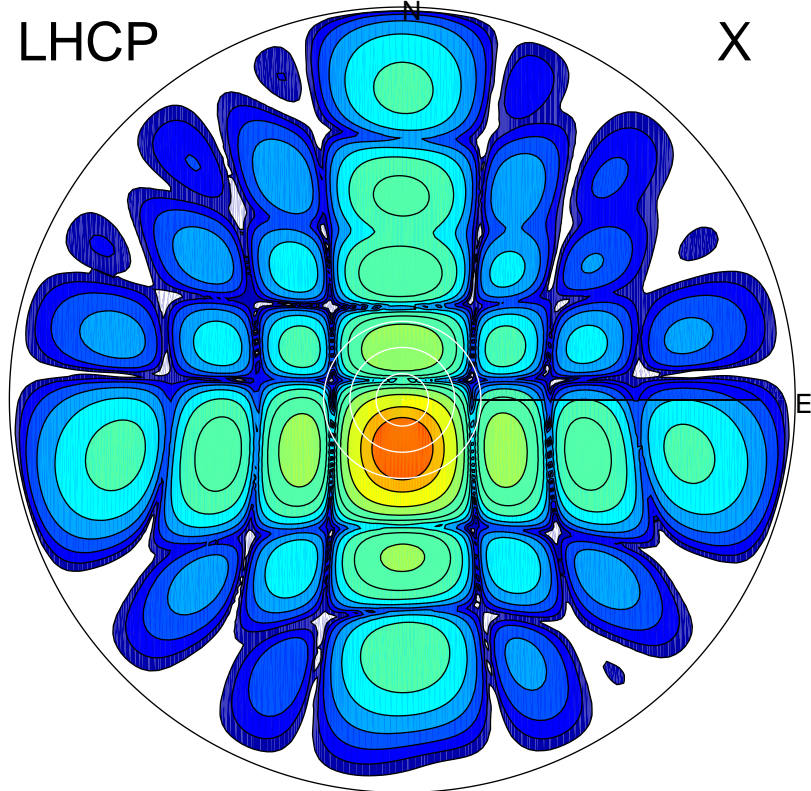


2016-11-04 14:25:10 A2 4.04000000 MHz 855.0 kW

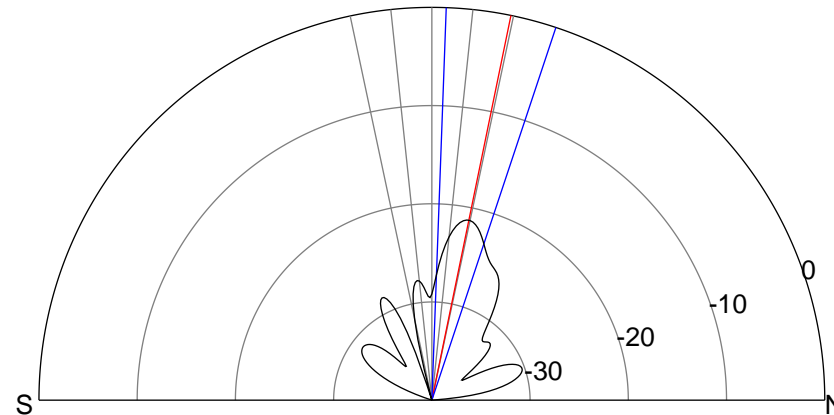
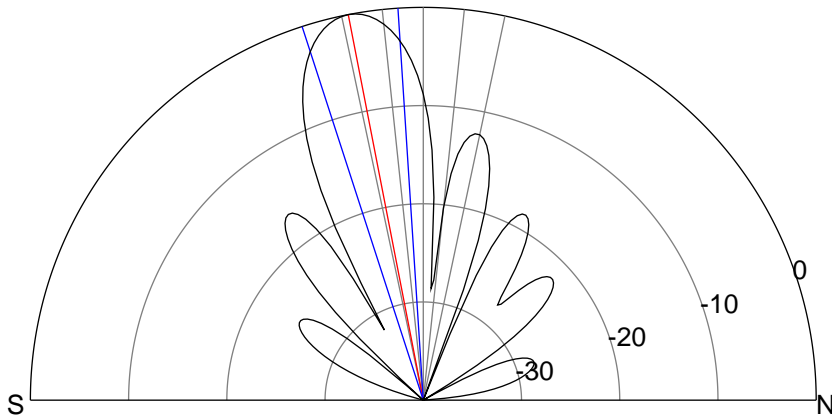
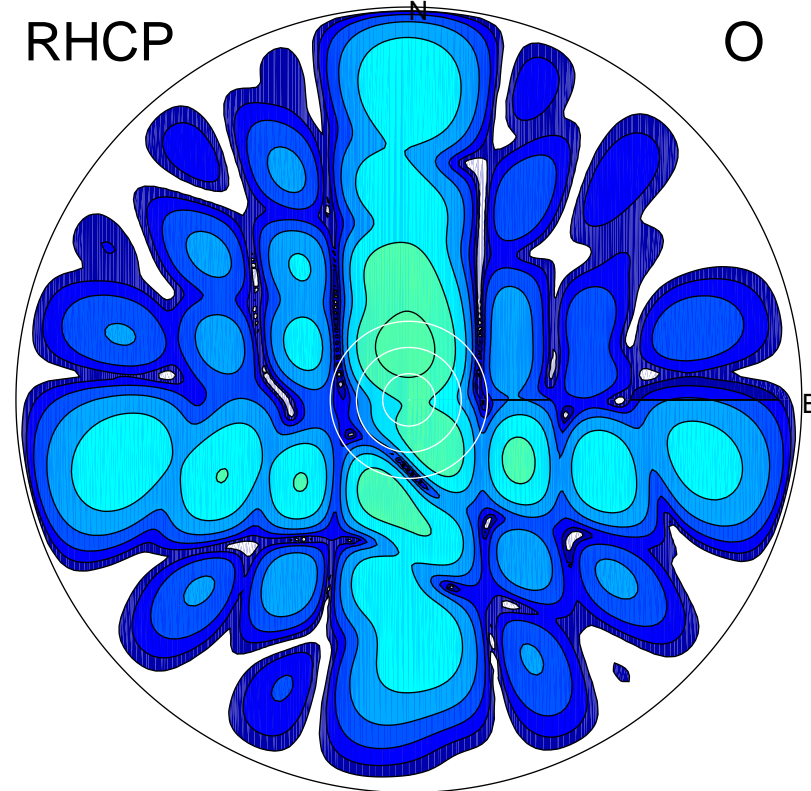
LHCP

X



RHCP

O



ERP 146.3 MW

Peak gain 22.3 dBi at Az 180 Zen 11
RHCP gain -7.7 dBi
N-S peak 22.3 dBi at Zen -11.0
N-S -3 dB beamwidth 14.3 deg.

ERP 1.1 MW

Peak gain 1.1 dBi at Az 356 Zen 12
LHCP gain 9.9 dBi
N-S peak 1.0 dBi at Zen 11.6
N-S -3 dB beamwidth 16.3 deg.