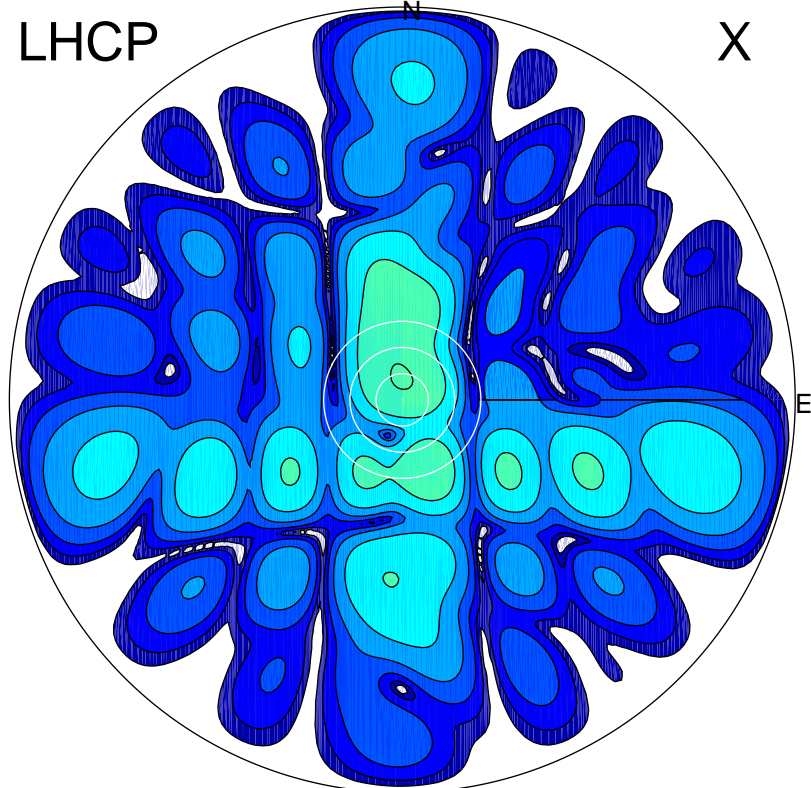


2016-11-04 14:01:00 A2 4.04000000 MHz 863.0 kW

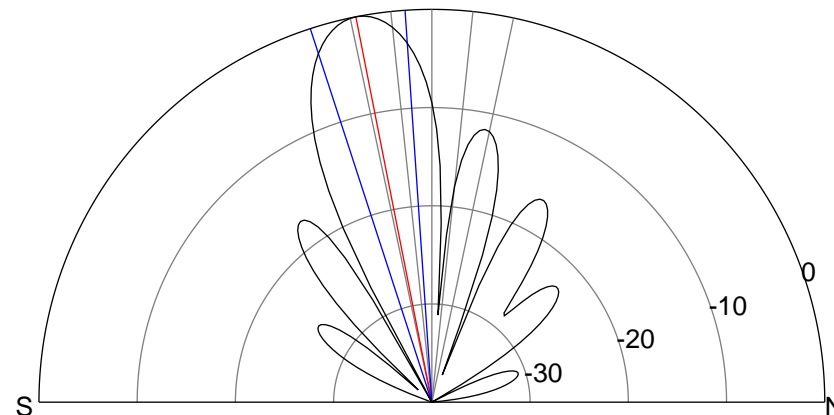
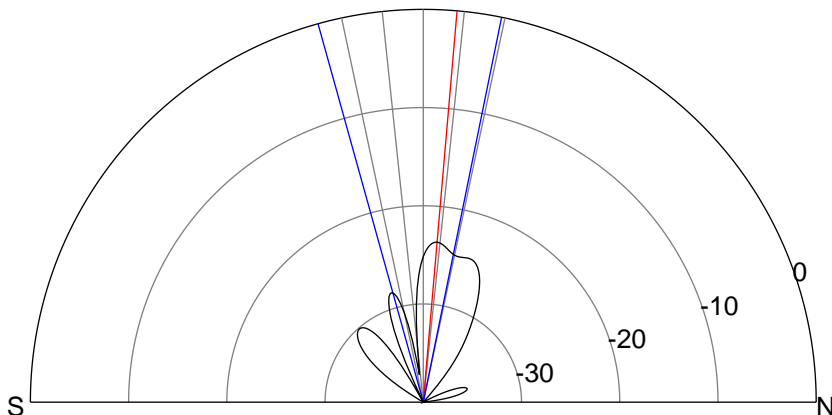
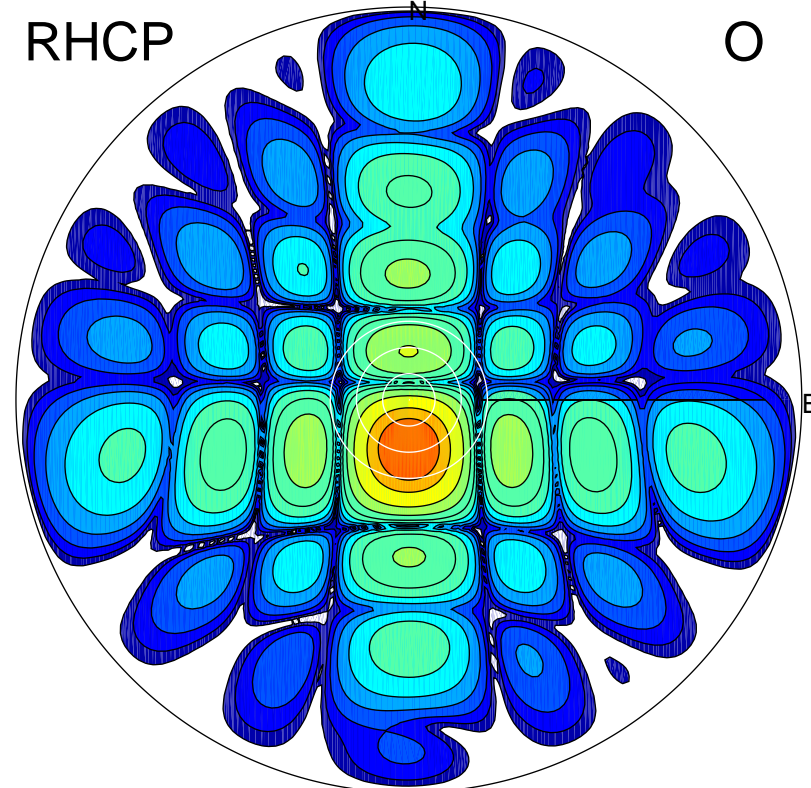
LHCP

X



RHCP

O



ERP 0.6 MW

Peak gain -1.3 dBi at Az 0 Zen 5
RHCP gain -0.5 dBi
N-S peak -1.3 dBi at Zen 4.9
N-S -3 dB beamwidth 27.0 deg.

ERP 148.8 MW

Peak gain 22.4 dBi at Az 181 Zen 11
LHCP gain -9.9 dBi
N-S peak 22.4 dBi at Zen -11.2
N-S -3 dB beamwidth 14.1 deg.