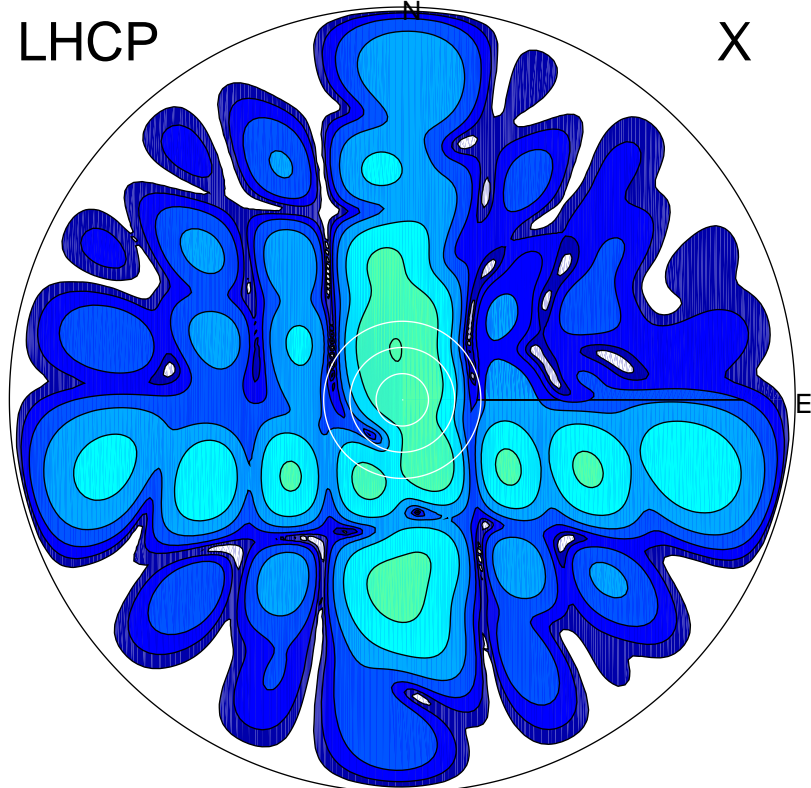


2016-11-02 14:35:55 A2 4.04000000 MHz 879.0 kW

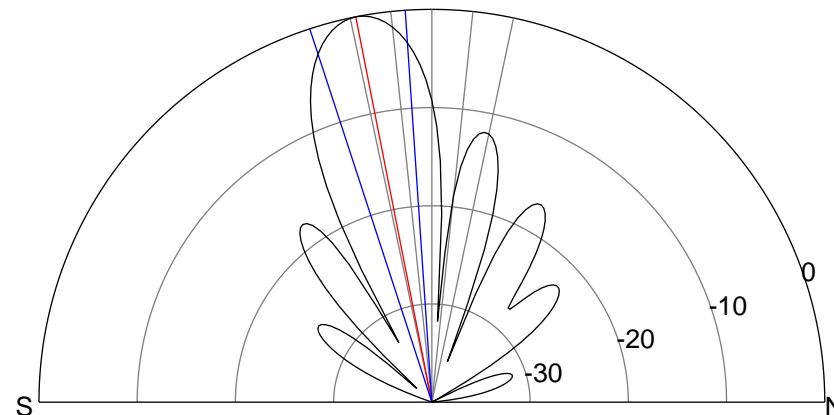
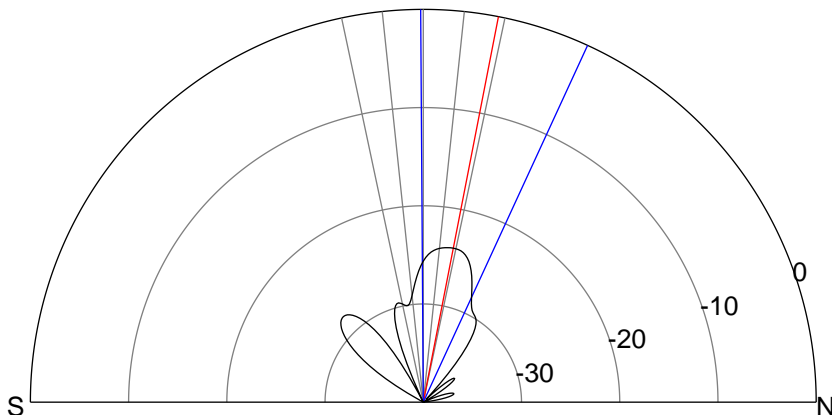
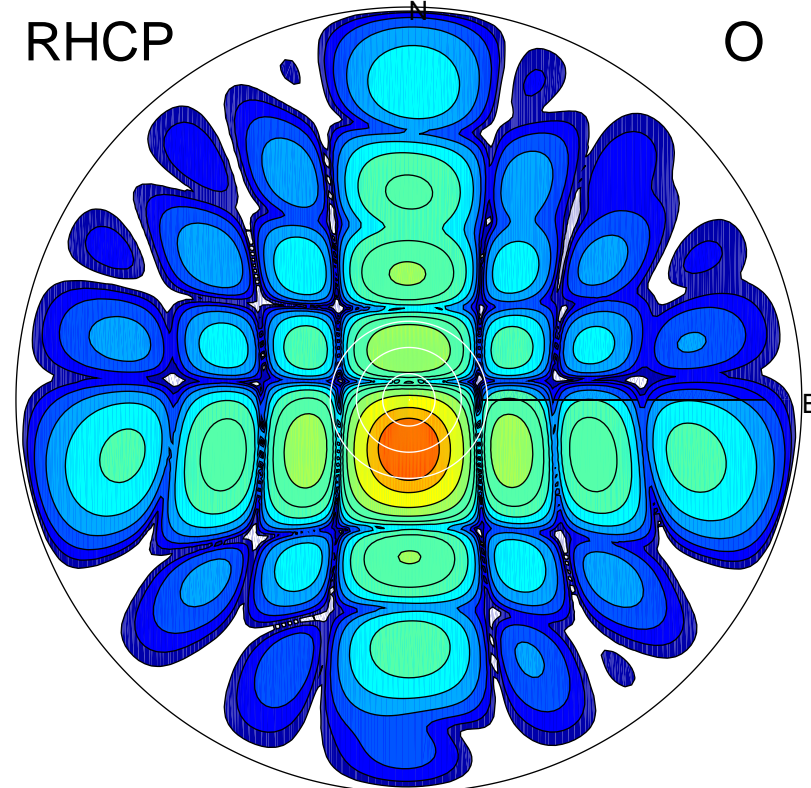
LHCP

X



RHCP

O



ERP 0.6 MW

Peak gain -1.5 dBi at Az 353 Zen 12
RHCP gain 10.2 dBi
N-S peak -1.7 dBi at Zen 11.0
N-S -3 dB beamwidth 25.1 deg.

ERP 151.1 MW

Peak gain 22.4 dBi at Az 180 Zen 11
LHCP gain -7.6 dBi
N-S peak 22.4 dBi at Zen -11.2
N-S -3 dB beamwidth 14.2 deg.