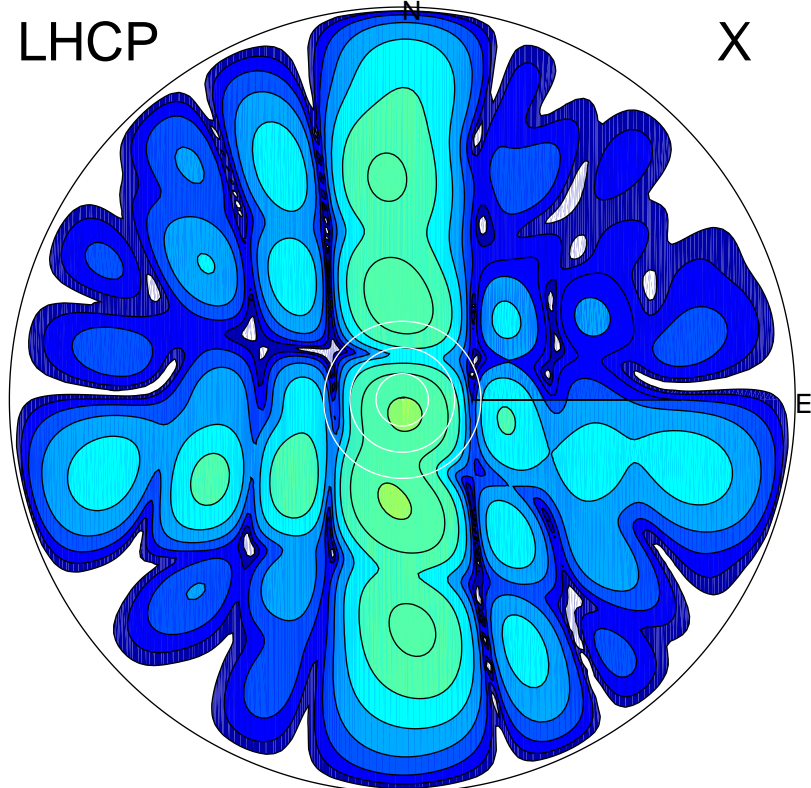


2016-10-25 14:01:00 A2 4.04000000 MHz 769.0 kW

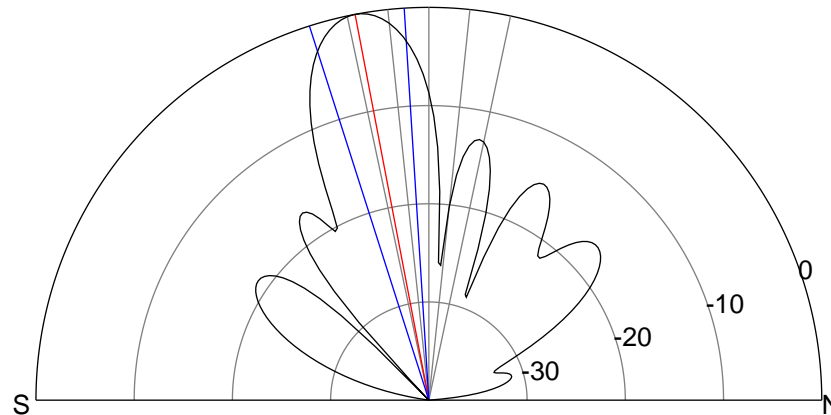
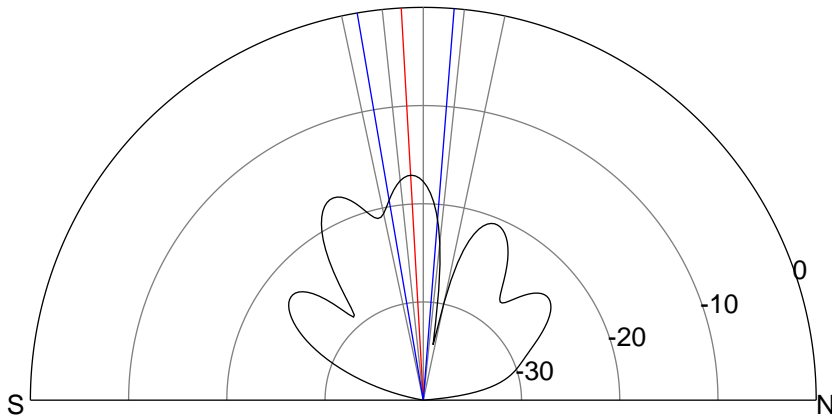
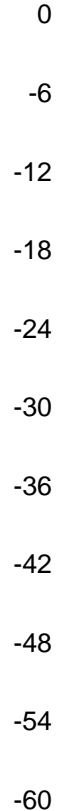
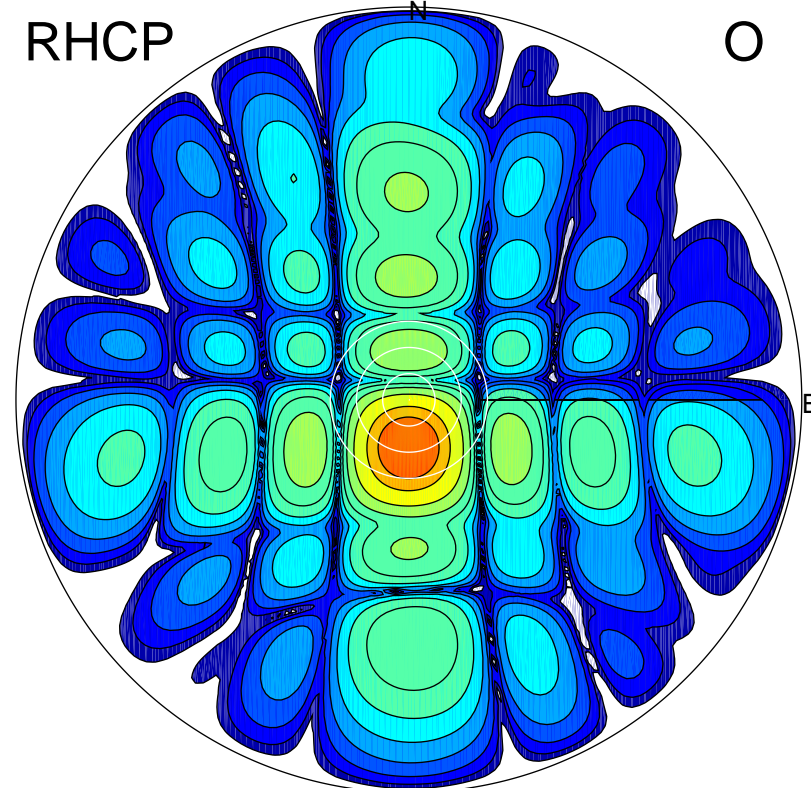
LHCP

X



RHCP

O



ERP 2.5 MW

Peak gain 5.0 dBi at Az 169 Zen 3
RHCP gain 18.0 dBi
N-S peak 5.0 dBi at Zen -3.2
N-S -3 dB beamwidth 14.2 deg.

ERP 124.0 MW

Peak gain 22.1 dBi at Az 179 Zen 11
LHCP gain 2.0 dBi
N-S peak 22.1 dBi at Zen -10.8
N-S -3 dB beamwidth 14.1 deg.