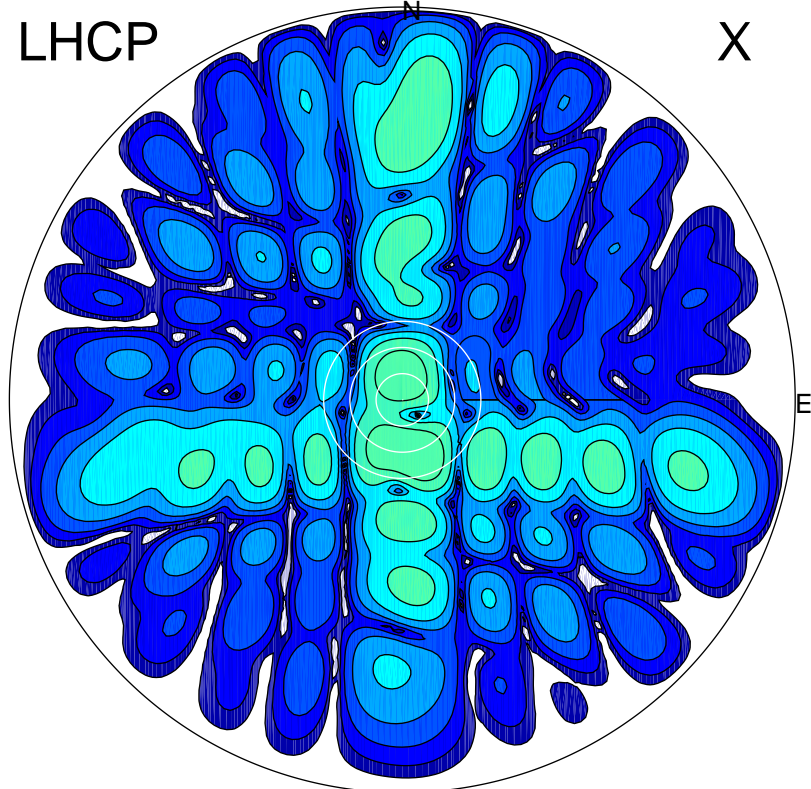


2016-10-24 14:01:00 A2 5.42300000 MHz 896.0 kW

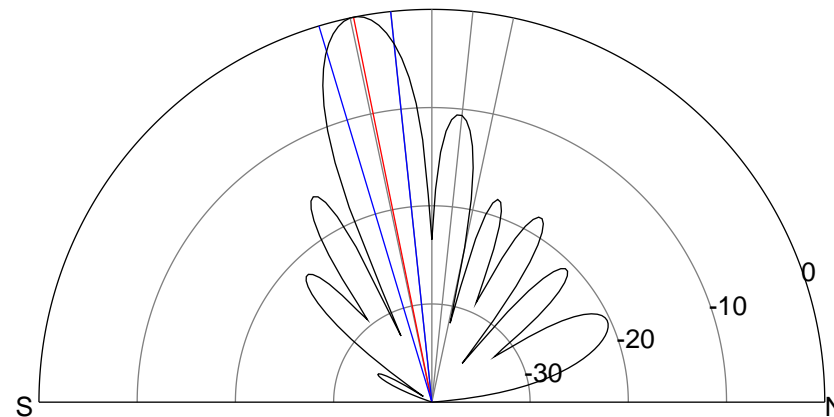
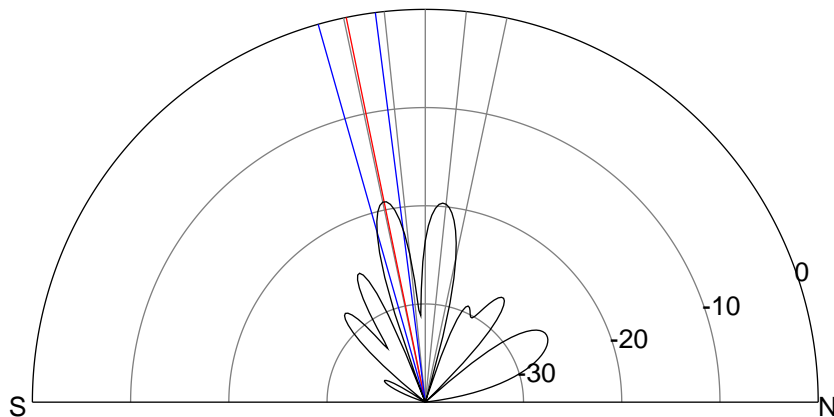
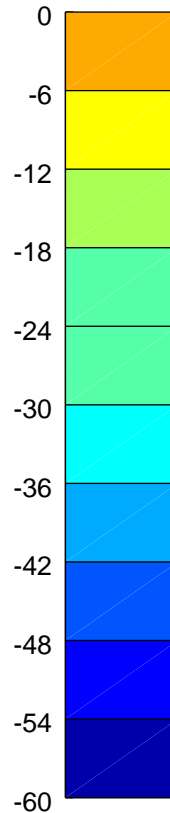
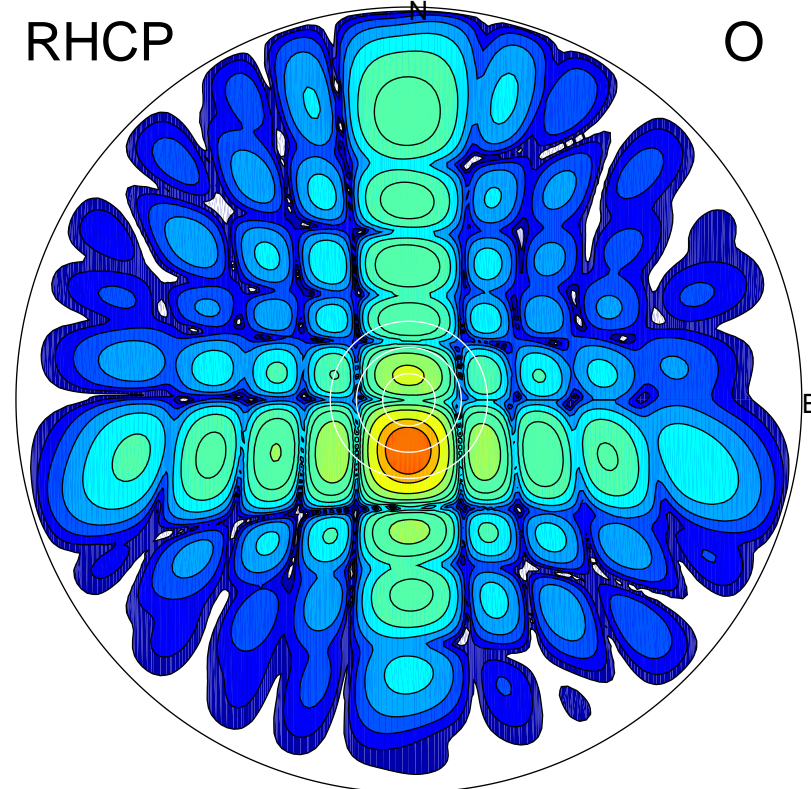
LHCP

X



RHCP

O



ERP 3.5 MW

Peak gain 5.9 dBi at Az 165 Zen 13
RHCP gain 23.1 dBi
N-S peak 5.3 dBi at Zen -11.6
N-S -3 dB beamwidth 8.5 deg.

ERP 249.7 MW

Peak gain 24.5 dBi at Az 182 Zen 11
LHCP gain 5.1 dBi
N-S peak 24.5 dBi at Zen -11.5
N-S -3 dB beamwidth 10.7 deg.