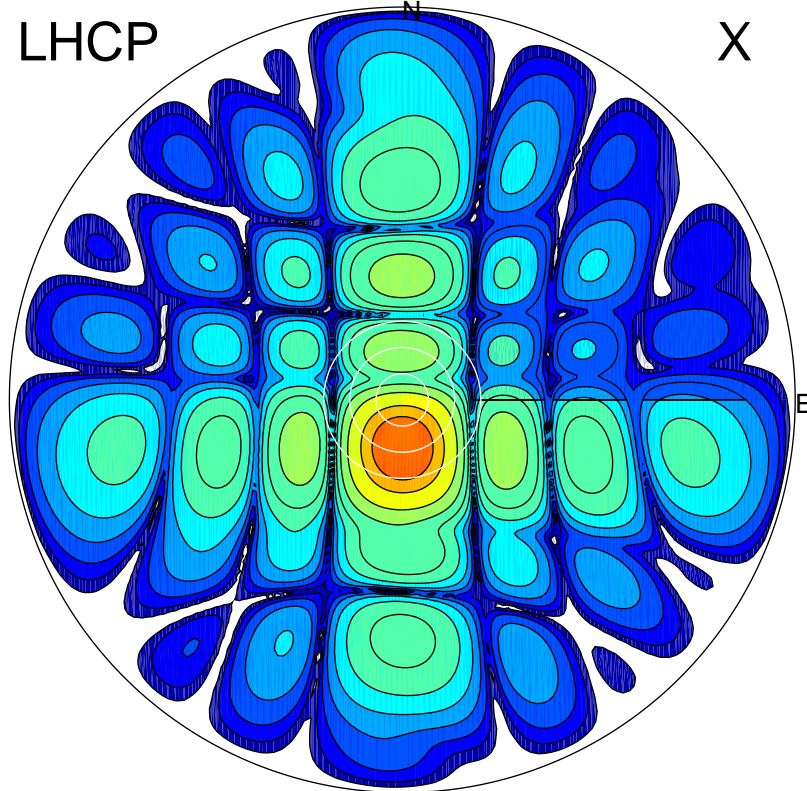


2016-10-23 14:46:57 A2 4.04000000 MHz 753.0 kW

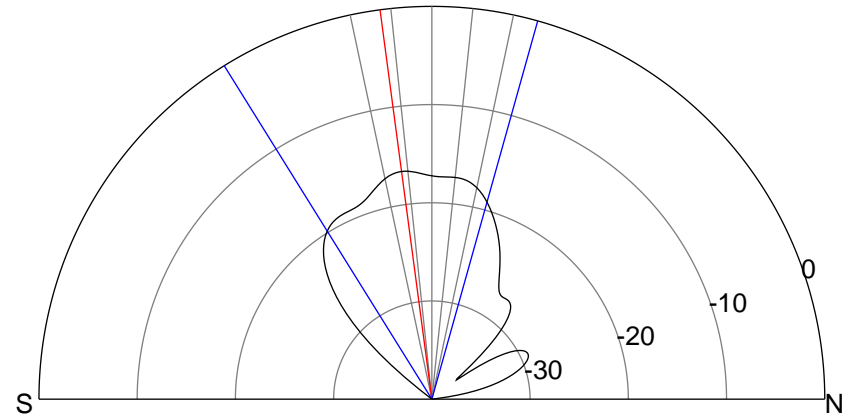
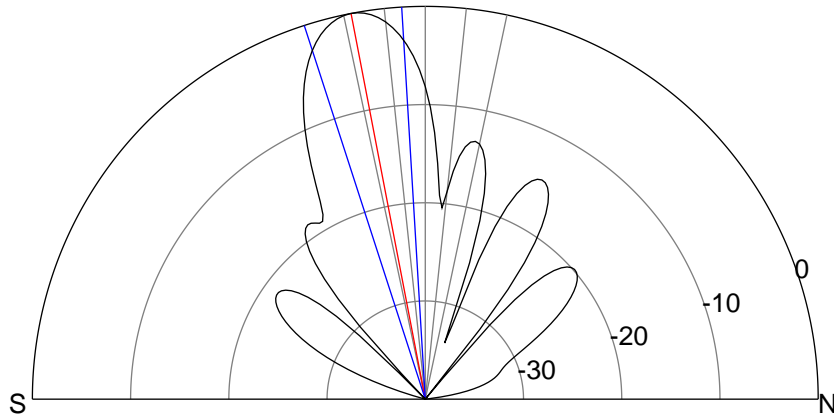
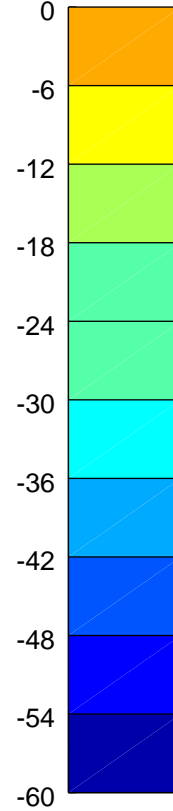
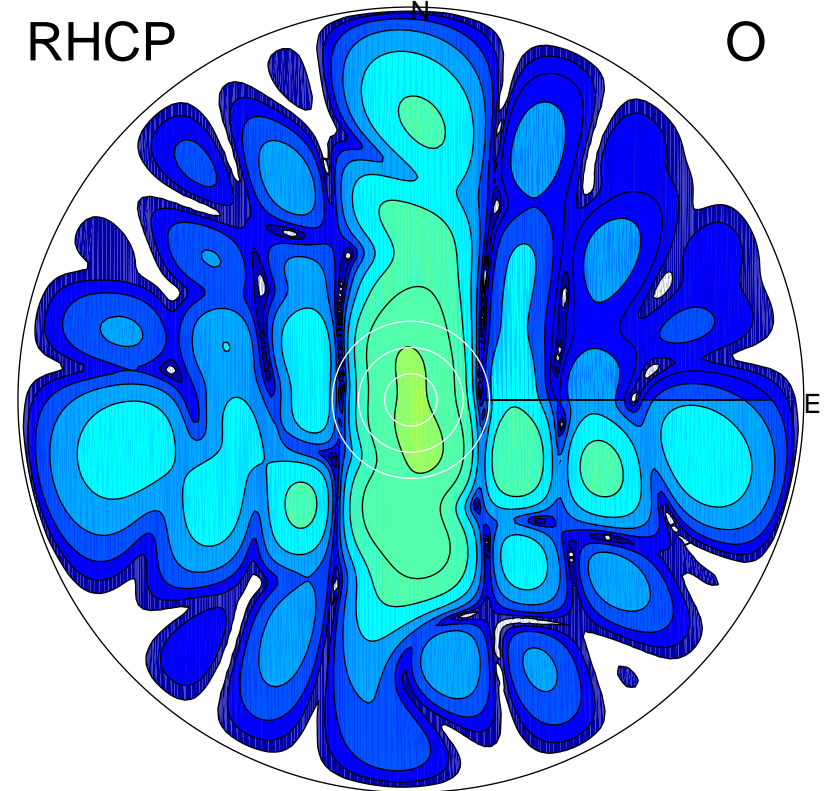
LHCP

X



RHCP

O



### ERP 118.8 MW

Peak gain 22.0 dBi at Az 181 Zen 11  
RHCP gain 5.0 dBi  
N-S peak 22.0 dBi at Zen -10.9  
N-S -3 dB beamwidth 14.5 deg.

### ERP 2.8 MW

Peak gain 5.6 dBi at Az 166 Zen 9  
LHCP gain 21.5 dBi  
N-S peak 5.4 dBi at Zen -7.6  
N-S -3 dB beamwidth 47.5 deg.