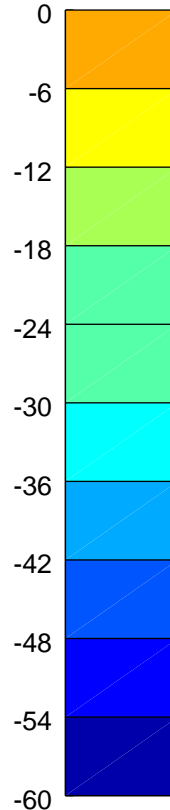
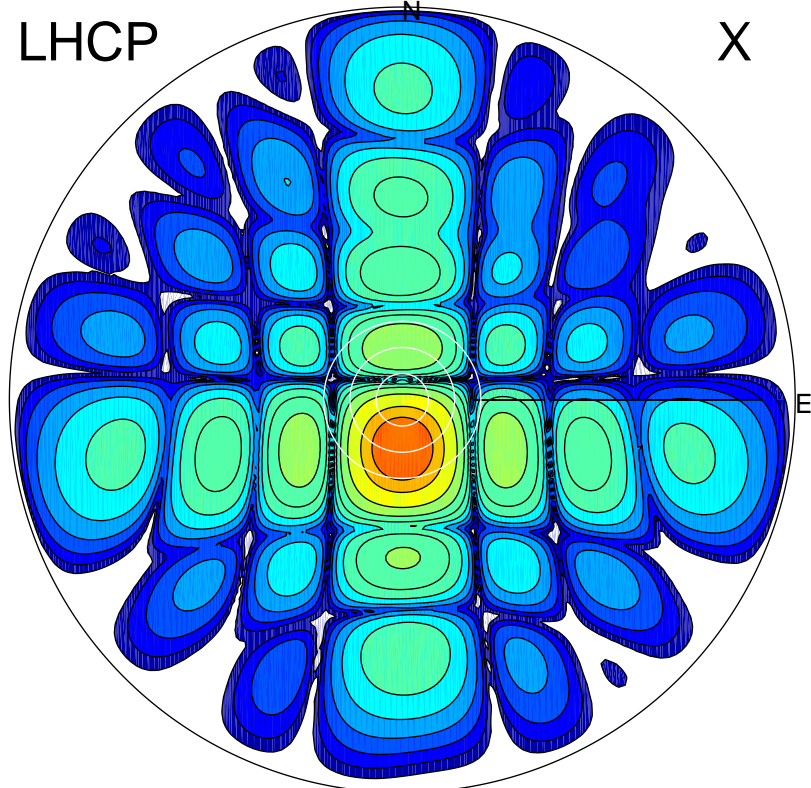


2016-10-23 14:31:57 A2 4.04000000 MHz 832.0 kW

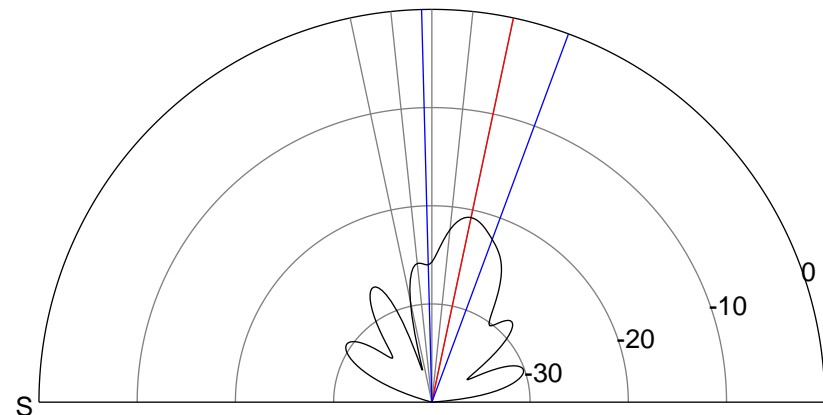
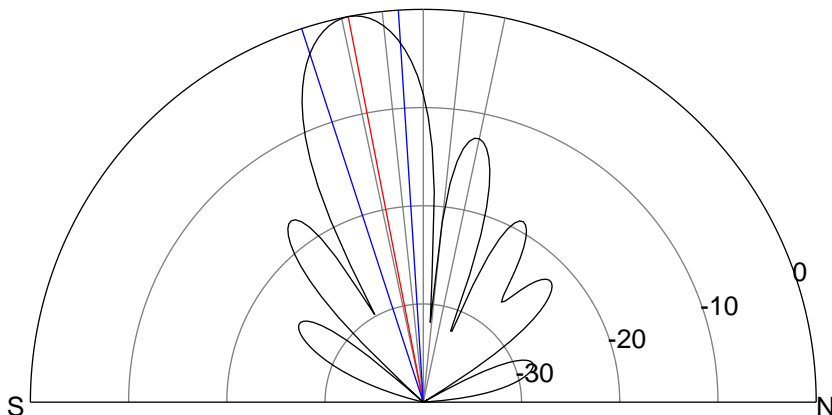
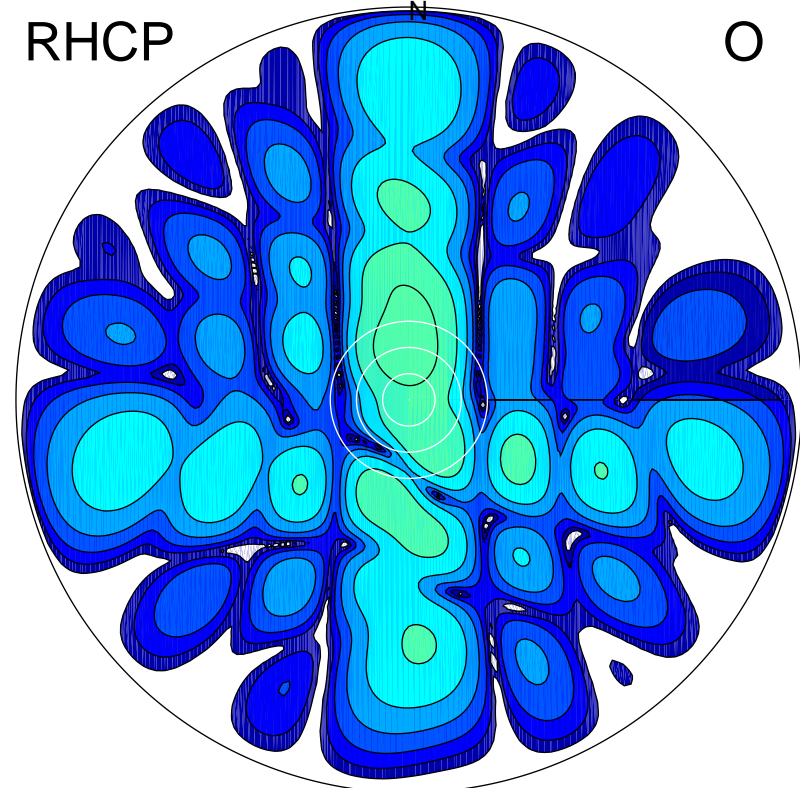
LHCP

X



RHCP

O



ERP 141.0 MW

Peak gain 22.3 dBi at Az 180 Zen 11
RHCP gain -6.0 dBi
N-S peak 22.3 dBi at Zen -11.0
N-S -3 dB beamwidth 14.4 deg.

ERP 1.2 MW

Peak gain 1.6 dBi at Az 357 Zen 12
LHCP gain 9.7 dBi
N-S peak 1.5 dBi at Zen 12.0
N-S -3 dB beamwidth 21.8 deg.