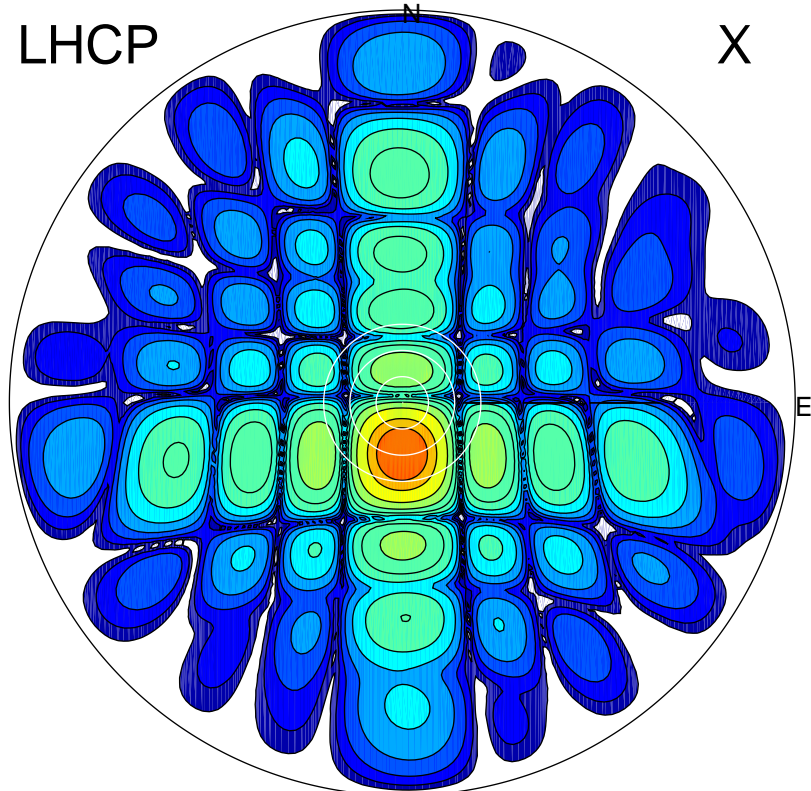


2016-10-23 13:31:57 A2 4.91280000 MHz 841.0 kW

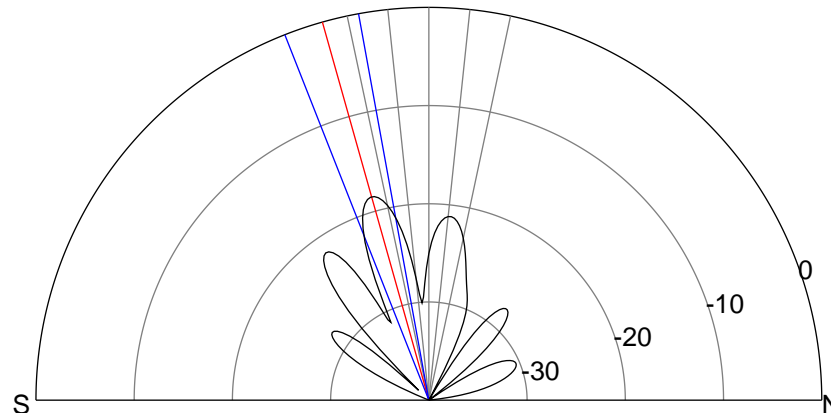
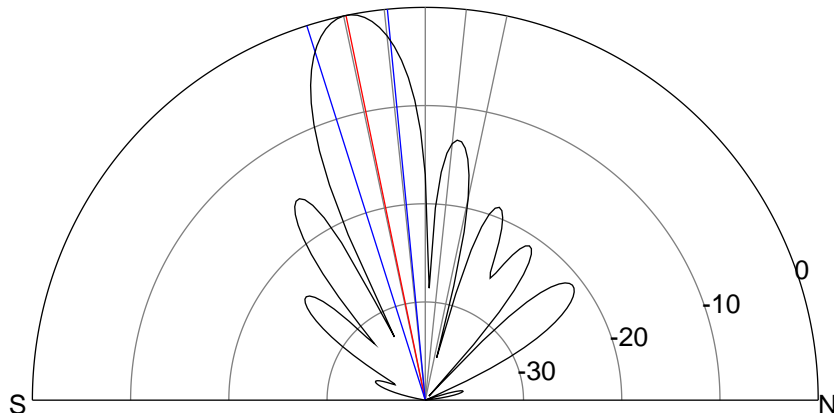
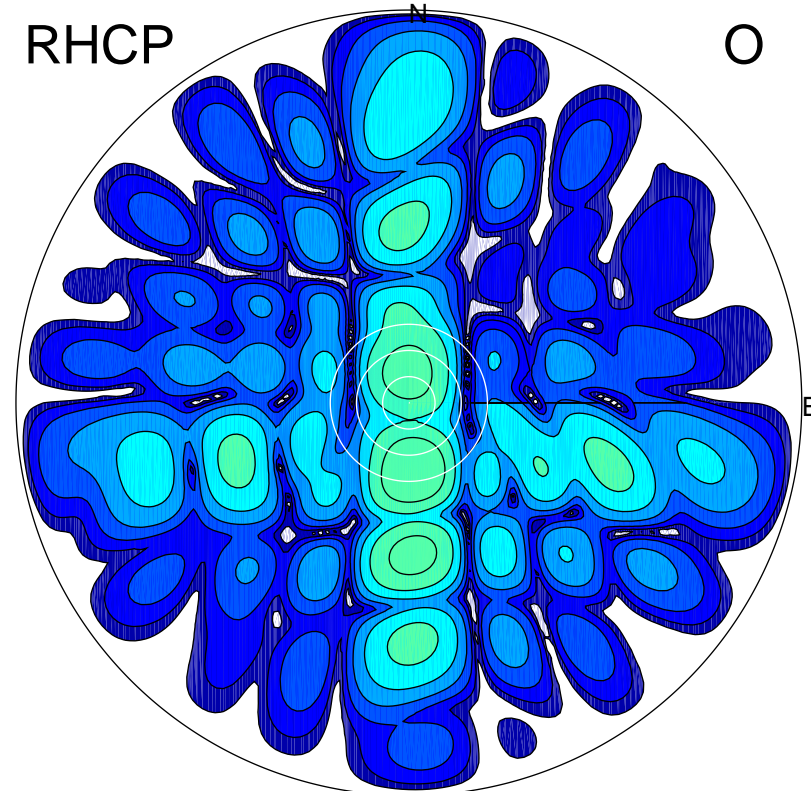
LHCP

X



RHCP

O



ERP 199.2 MW

Peak gain 23.7 dBi at Az 181 Zen 12
RHCP gain 4.0 dBi
N-S peak 23.8 dBi at Zen -11.6
N-S -3 dB beamwidth 12.0 deg.

ERP 2.9 MW

Peak gain 5.4 dBi at Az 176 Zen 16
LHCP gain 22.2 dBi
N-S peak 5.3 dBi at Zen -15.7
N-S -3 dB beamwidth 11.2 deg.