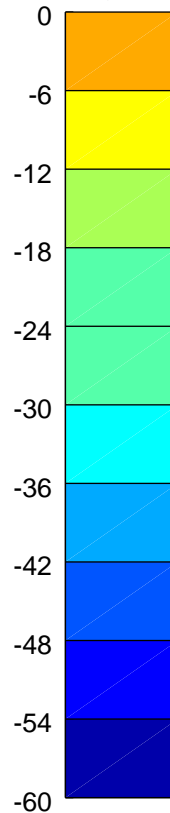
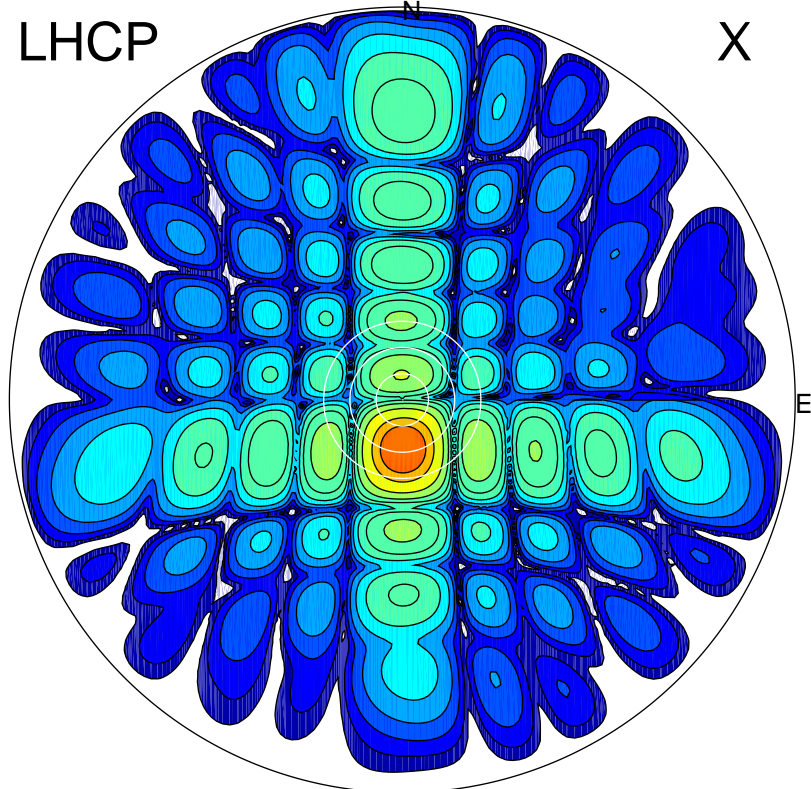


2016-10-23 12:16:57 A2 5.42300000 MHz 872.0 kW

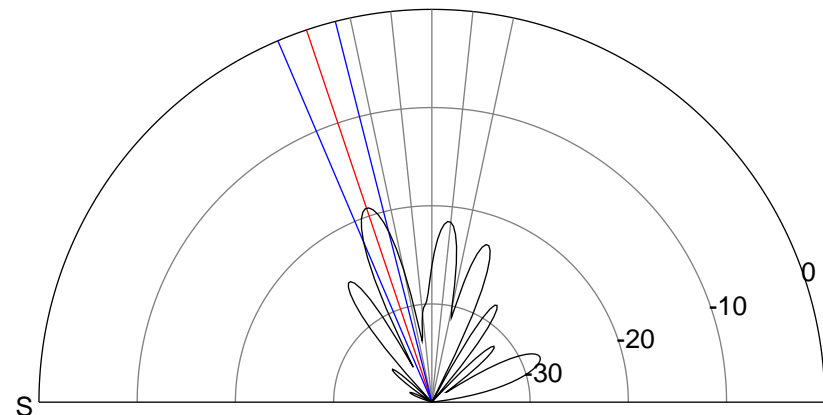
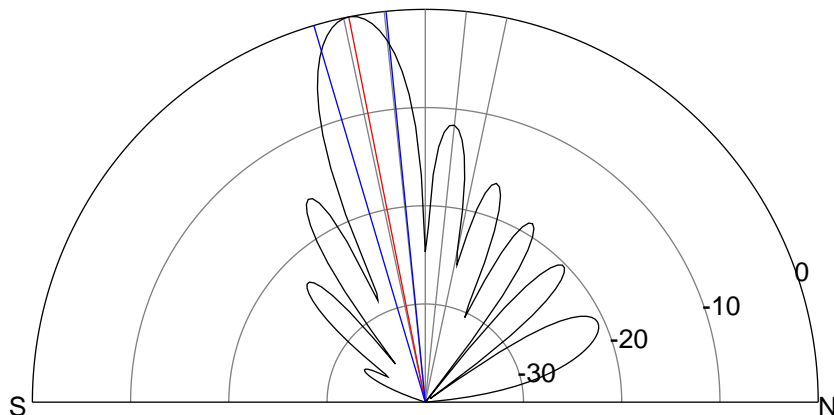
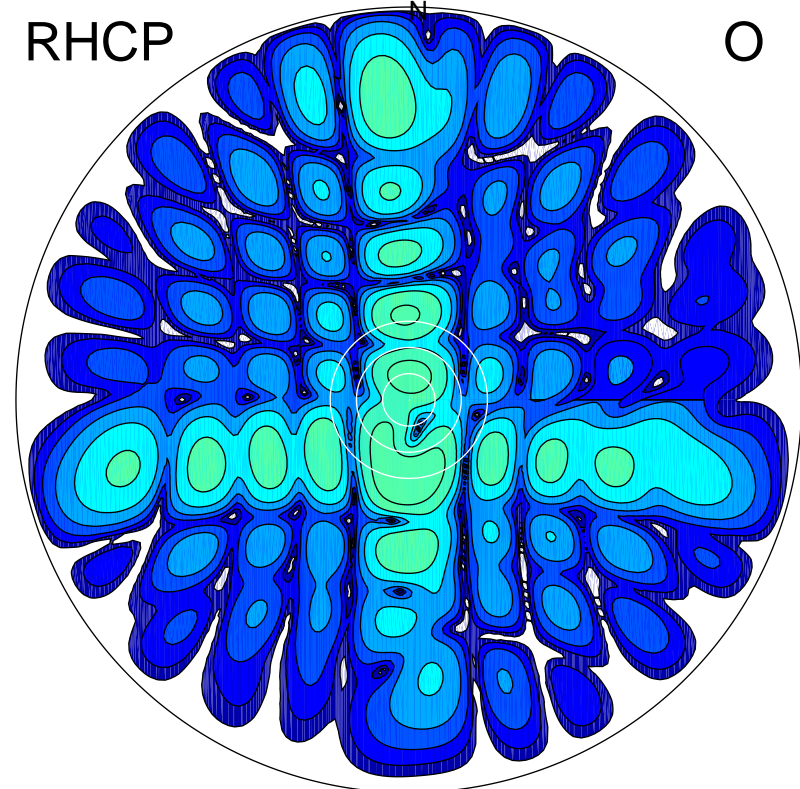
LHCP

X



RHCP

O



ERP 246.1 MW

Peak gain 24.5 dBi at Az 178 Zen 11
RHCP gain -4.7 dBi
N-S peak 24.5 dBi at Zen -11.2
N-S -3 dB beamwidth 10.7 deg.

ERP 3.0 MW

Peak gain 5.4 dBi at Az 182 Zen 19
LHCP gain 18.2 dBi
N-S peak 5.4 dBi at Zen -18.6
N-S -3 dB beamwidth 8.9 deg.