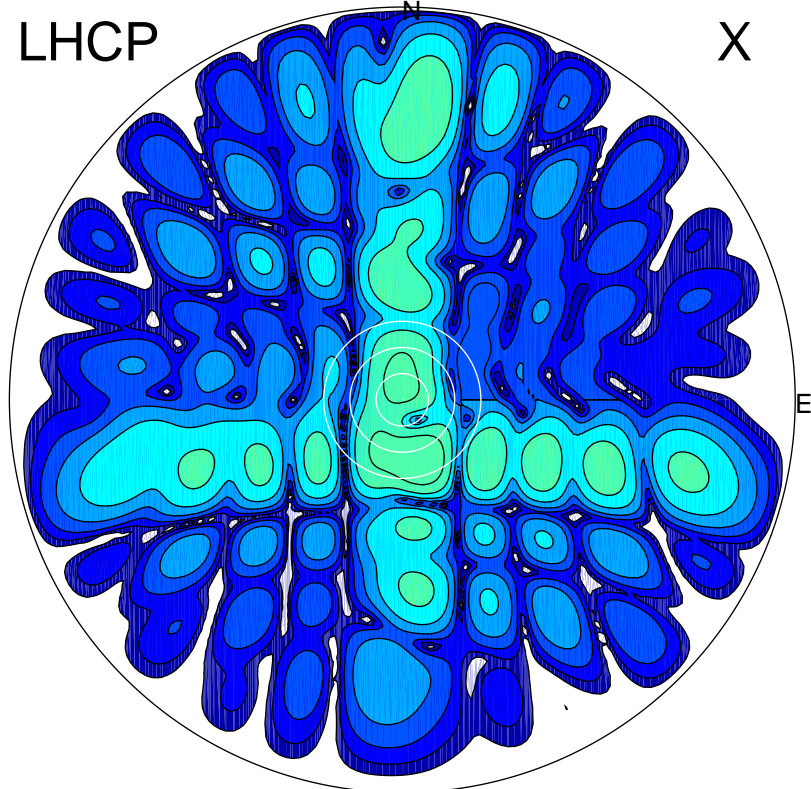


2016-10-23 12:01:57 A2 5.42300000 MHz 884.0 kW

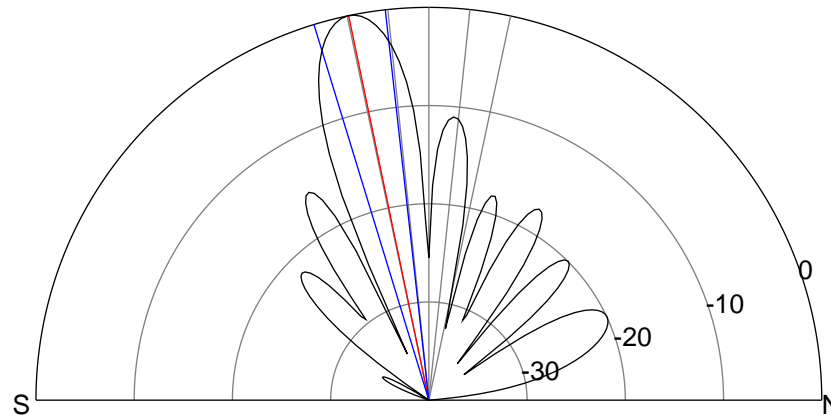
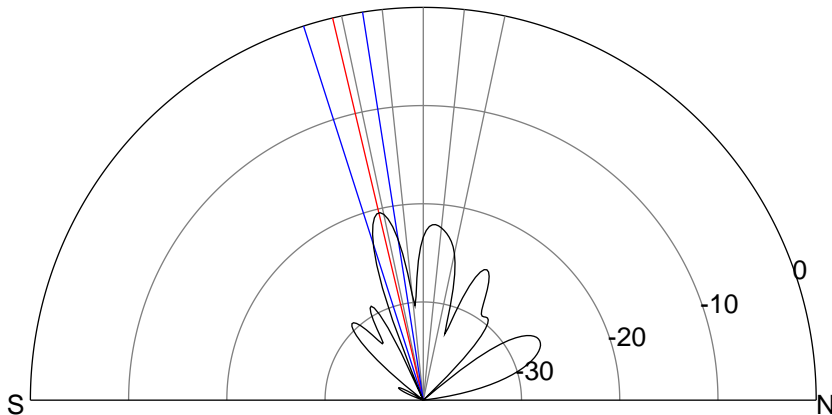
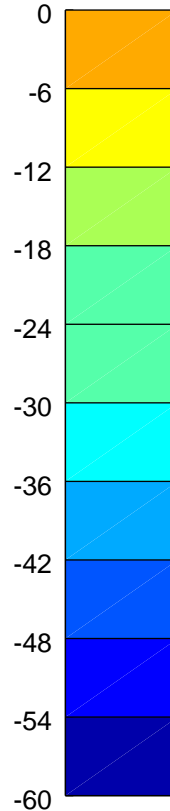
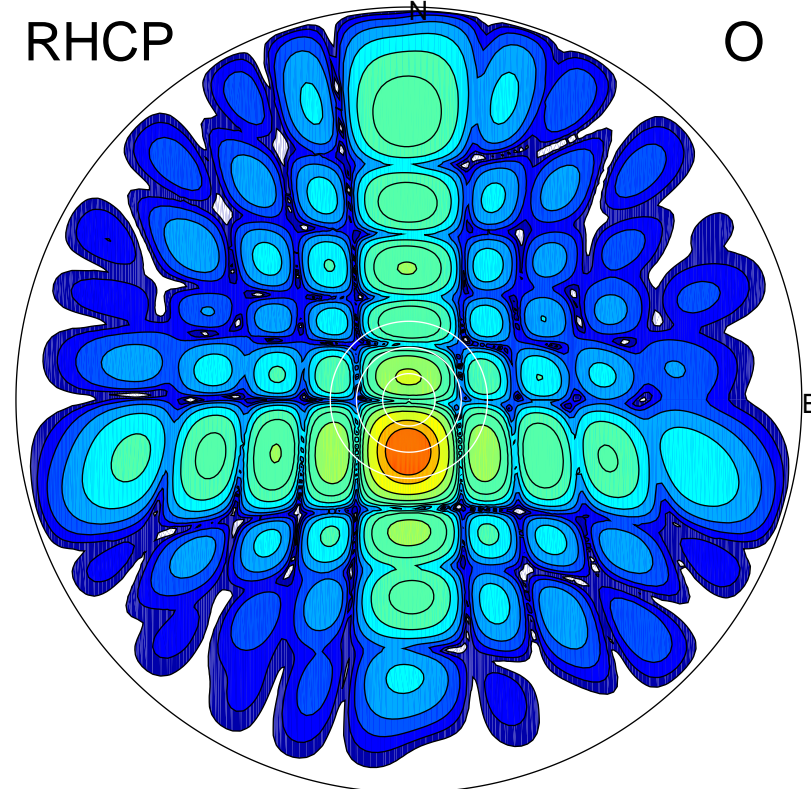
LHCP

X



RHCP

O



### ERP 3.2 MW

Peak gain 5.6 dBi at Az 163 Zen 14  
RHCP gain 22.3 dBi  
N-S peak 4.1 dBi at Zen -13.3  
N-S -3 dB beamwidth 8.9 deg.

### ERP 249.4 MW

Peak gain 24.5 dBi at Az 181 Zen 12  
LHCP gain 3.7 dBi  
N-S peak 24.5 dBi at Zen -11.8  
N-S -3 dB beamwidth 10.6 deg.