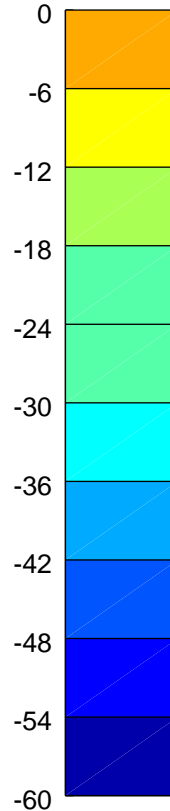
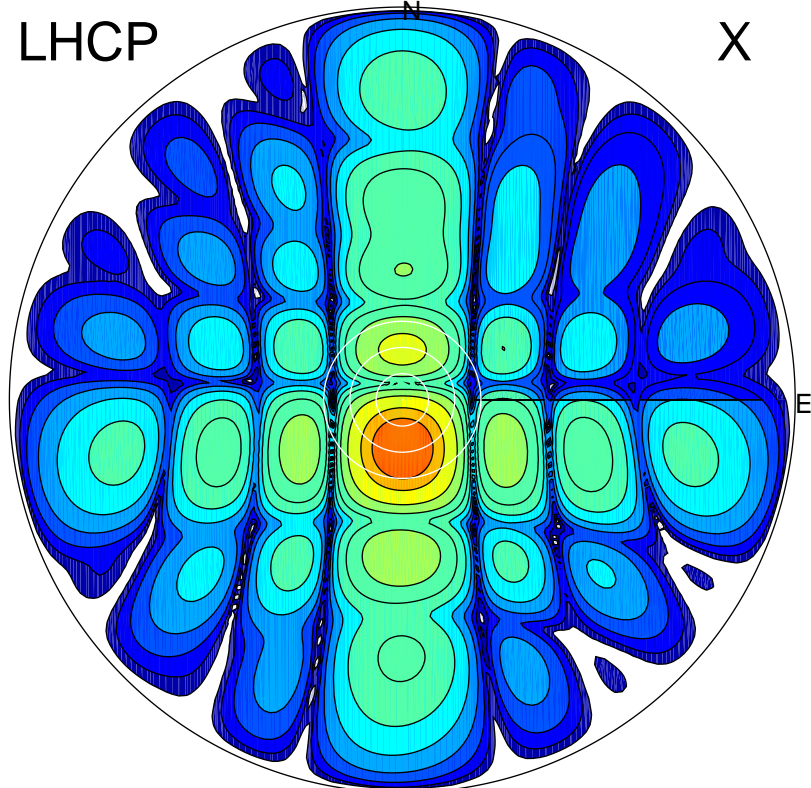


2016-10-22 15:16:57 A2 4.04000000 MHz 736.0 kW

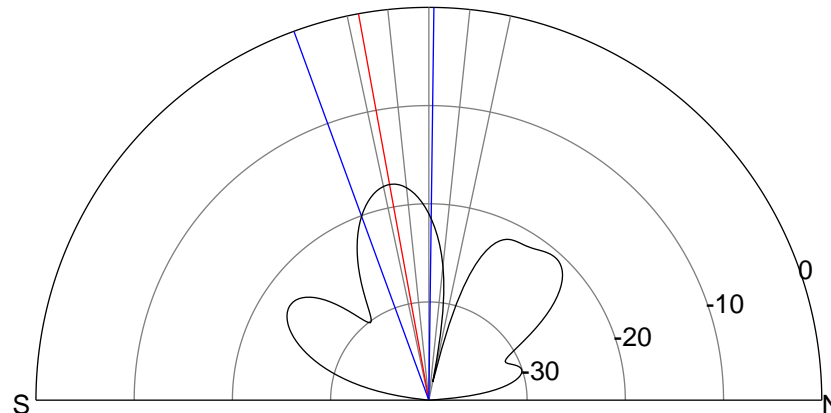
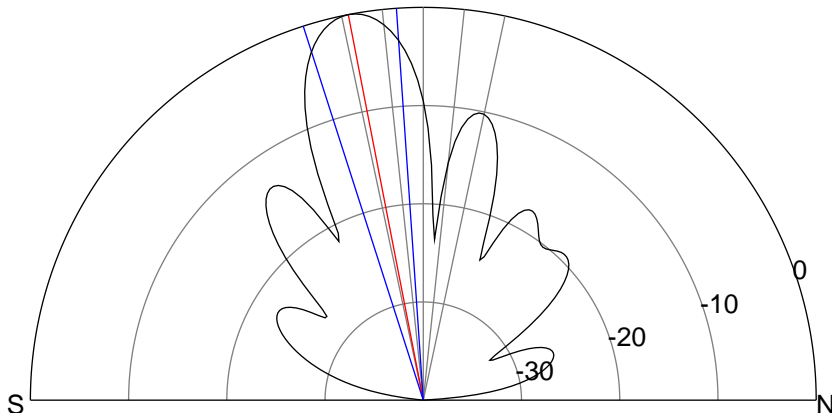
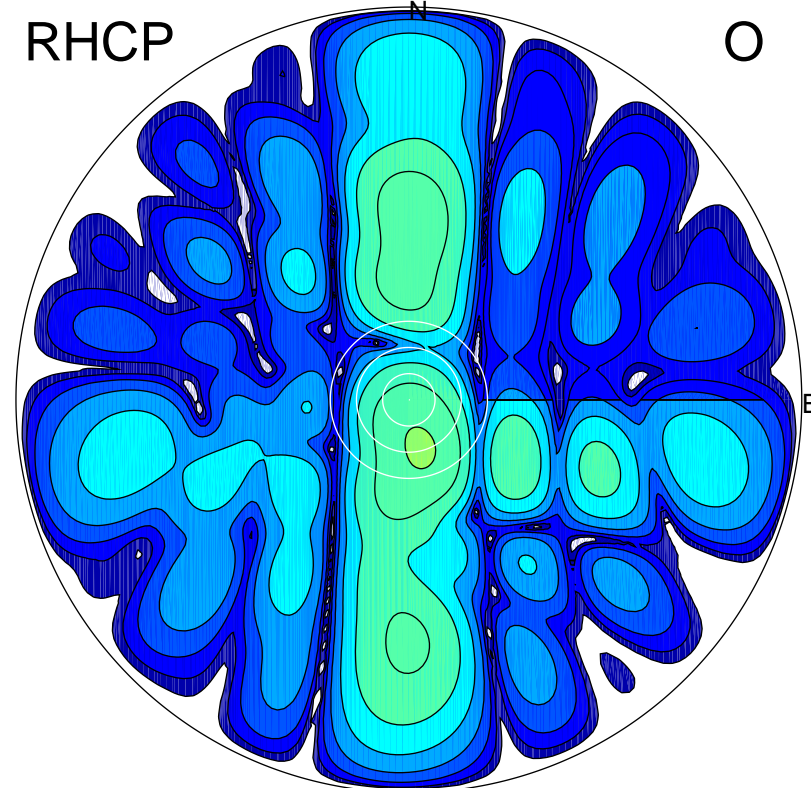
LHCP

X



RHCP

O



### ERP 118.1 MW

Peak gain 22.1 dBi at Az 181 Zen 11  
RHCP gain 4.3 dBi  
N-S peak 22.1 dBi at Zen -11.0  
N-S -3 dB beamwidth 13.9 deg.

### ERP 2.2 MW

Peak gain 4.8 dBi at Az 167 Zen 11  
LHCP gain 21.7 dBi  
N-S peak 4.4 dBi at Zen -10.3  
N-S -3 dB beamwidth 20.8 deg.