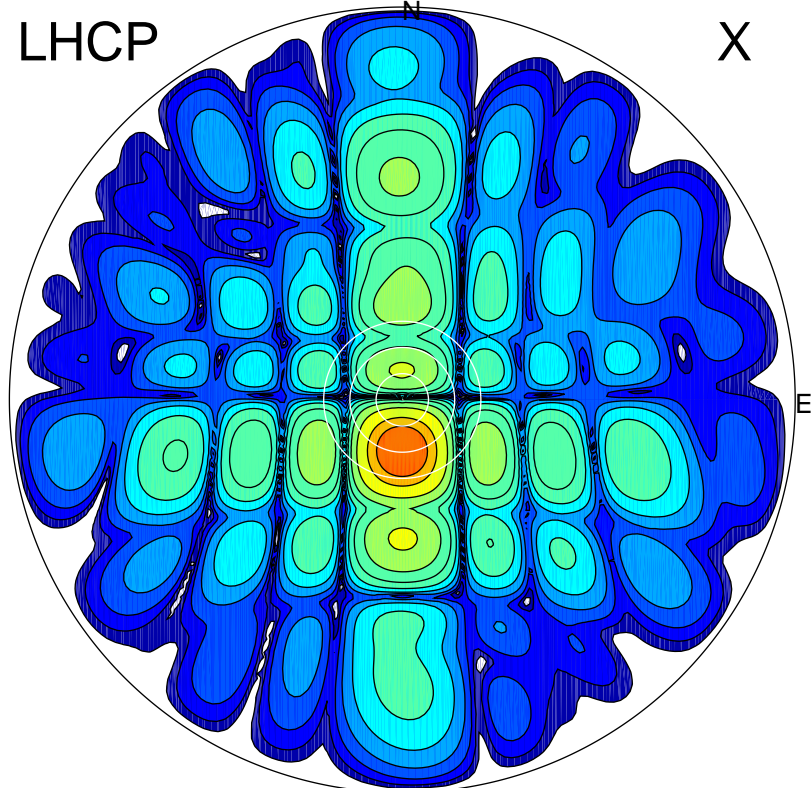


2016-10-22 14:46:57 A2 4.91280000 MHz 776.0 kW

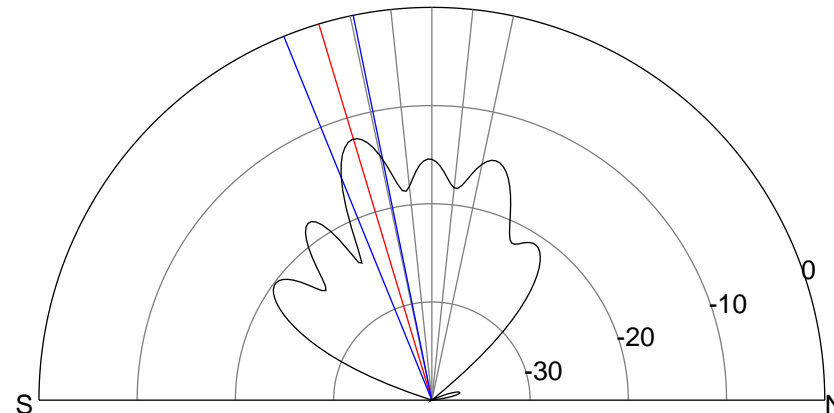
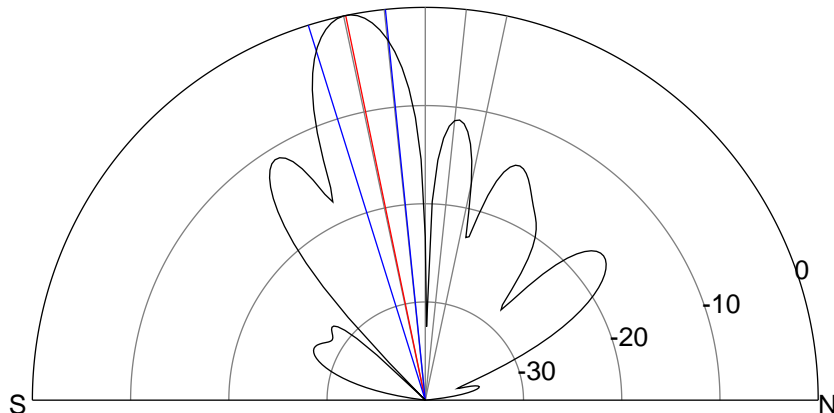
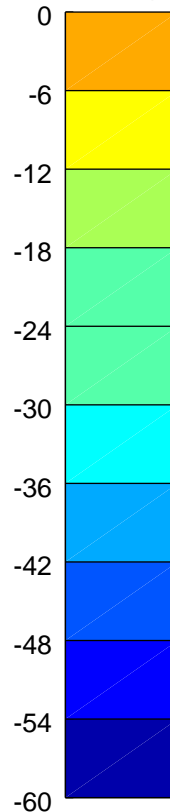
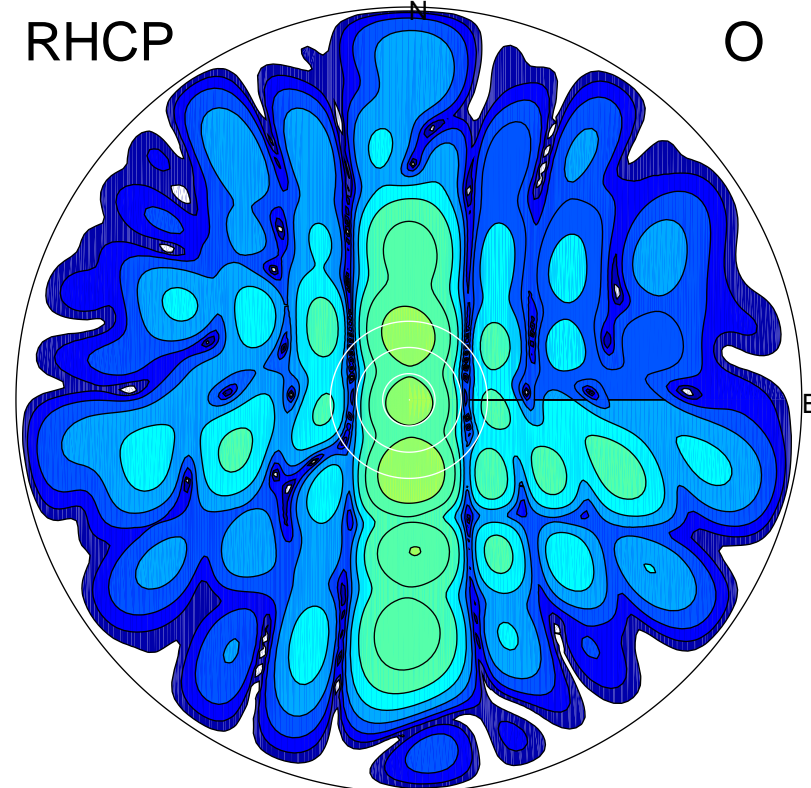
LHCP

X



RHCP

O



ERP 158.4 MW

Peak gain 23.1 dBi at Az 181 Zen 12
RHCP gain 8.5 dBi
N-S peak 23.1 dBi at Zen -11.7
N-S -3 dB beamwidth 11.5 deg.

ERP 9.5 MW

Peak gain 10.9 dBi at Az 177 Zen 17
LHCP gain 20.6 dBi
N-S peak 10.9 dBi at Zen -16.7
N-S -3 dB beamwidth 10.6 deg.